

# **STILLAGUAMISH RIVER**

## **Geographic Response Plan**

**(STLGR-GRP)**

### **Response Strategies and Priorities**

**January 2026**

## **Before you print this document**

This section and its appendices are provided in “landscape” page orientation. The detailed 2-page information sheets for response strategies, notification strategies, staging areas, and boat launch locations in the appendices have been designed for duplex printing (front and back side of paper), “open to top” configuration.

## INTRODUCTION

This section provides information on GRP response strategies and the order they should be implemented, based on Potential Oil Spill Origin Points (POSOPs) and the proximity and relative priority of sensitive resources near those point locations. Area maps, sector maps, and information on staging areas and boat launch locations are also provided in this section. During a spill incident, GRP response strategies should be implemented as soon as possible. Unless circumstances unique to a particular spill situation dictate otherwise, the priority tables in Strategy and Response Priorities should be used to decide the order that GRP strategies are deployed. The downstream movement of oil and the time it takes to mobilize response resources to deploy GRP strategies must always be considered when setting implementation priorities. Information on resources at risk, sensitive areas, and flight restrictions can be found in the Resources at Risk section. Information on shoreline countermeasures can be found in the Northwest Area Shoreline Countermeasures Manual ([NWACP Section 9420](#)). The Northwest Regional Contingency Plan (NWACP) is available online at <https://www.rrt10nwac.com/LinkPage?site=nwac&page=plans>.

These GRP strategies have been created to reduce spilled oil's impact on sensitive resources. They are not everything that should or could be done during a response to lessen the chance of injury to natural, cultural, and economic resources. Control and containment of an oil spill is always a higher priority than the implementation of response strategies. Although designed to be implemented during the initial phase of an oil spill, strategies may continue to be used throughout a response at the discretion of Unified Command with guidance provided by the Environmental Unit.

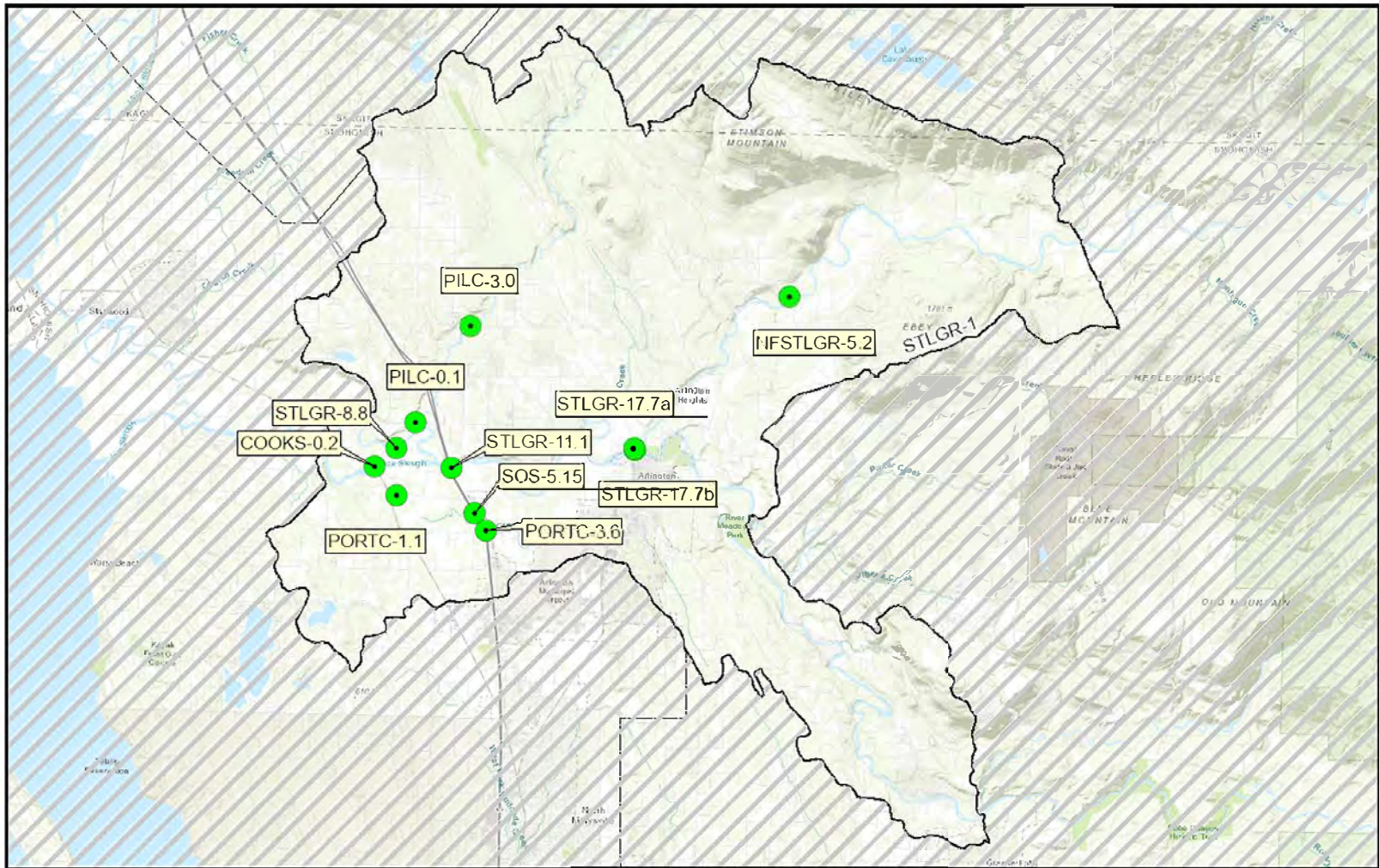
### On-site Considerations

#### *Before Deploying a GRP Strategy*

Will equipment or vehicles need to be staged on or near a roadway? If so, traffic control may be required. Contact the Washington State Patrol or local, county, municipality, or tribal police for assistance. At minimum, [Washington Department of Transportation \(WSDOT\) guidelines for work zone traffic control](#) should be followed when working on or near a roadway.

## **AREA OVERVIEW MAPS**

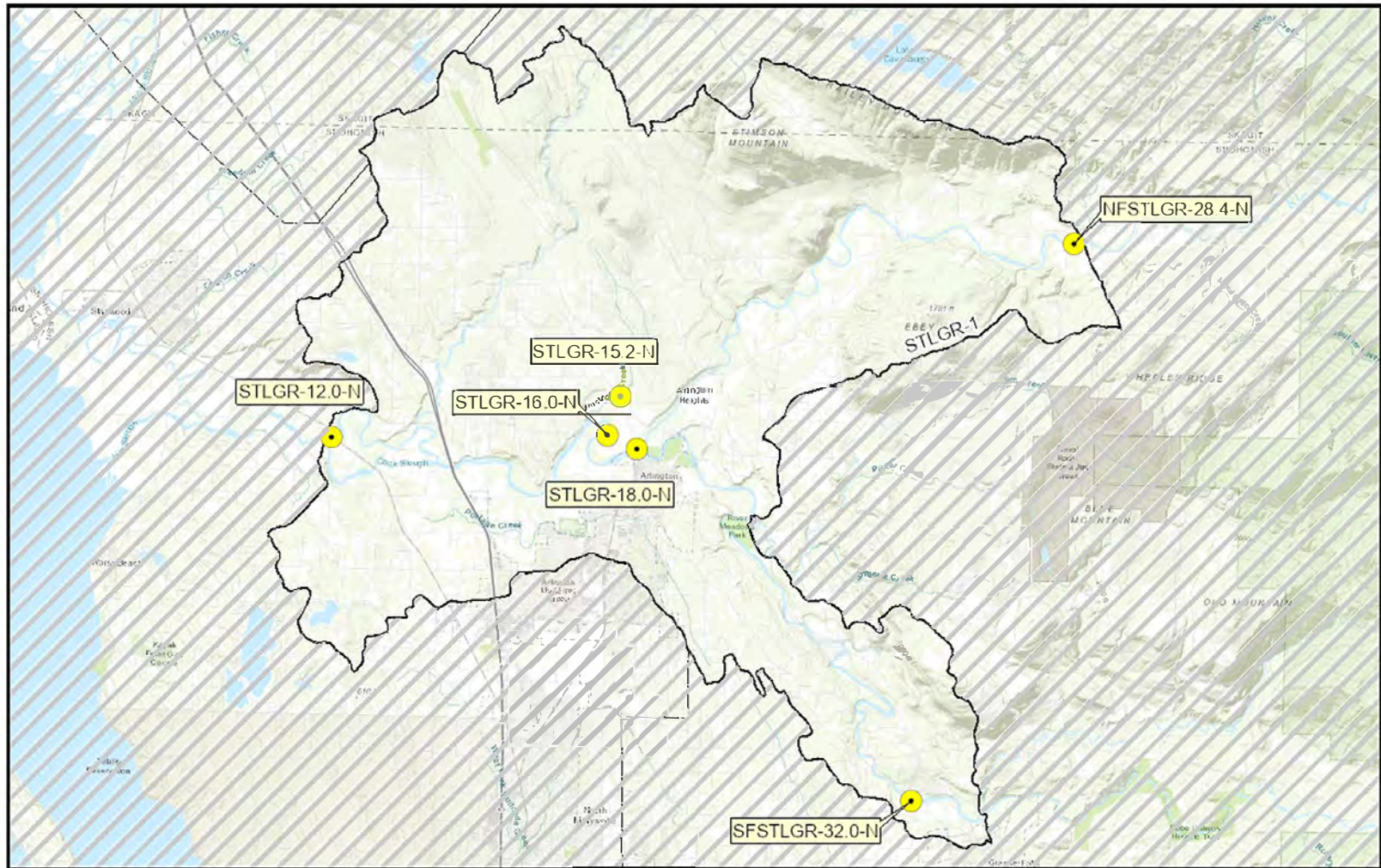
The following maps provide a geographic overview of the Stillaguamish River GRP planning area. Sector maps provide more detail on the location of response strategies, notification strategies, staging areas, boat launch locations, and POSOPs. Detailed information for each location can be found in the matrices or in this section's appendices. Priority tables for potential oil spill origin points can be found below.



● Response Strategy Locations



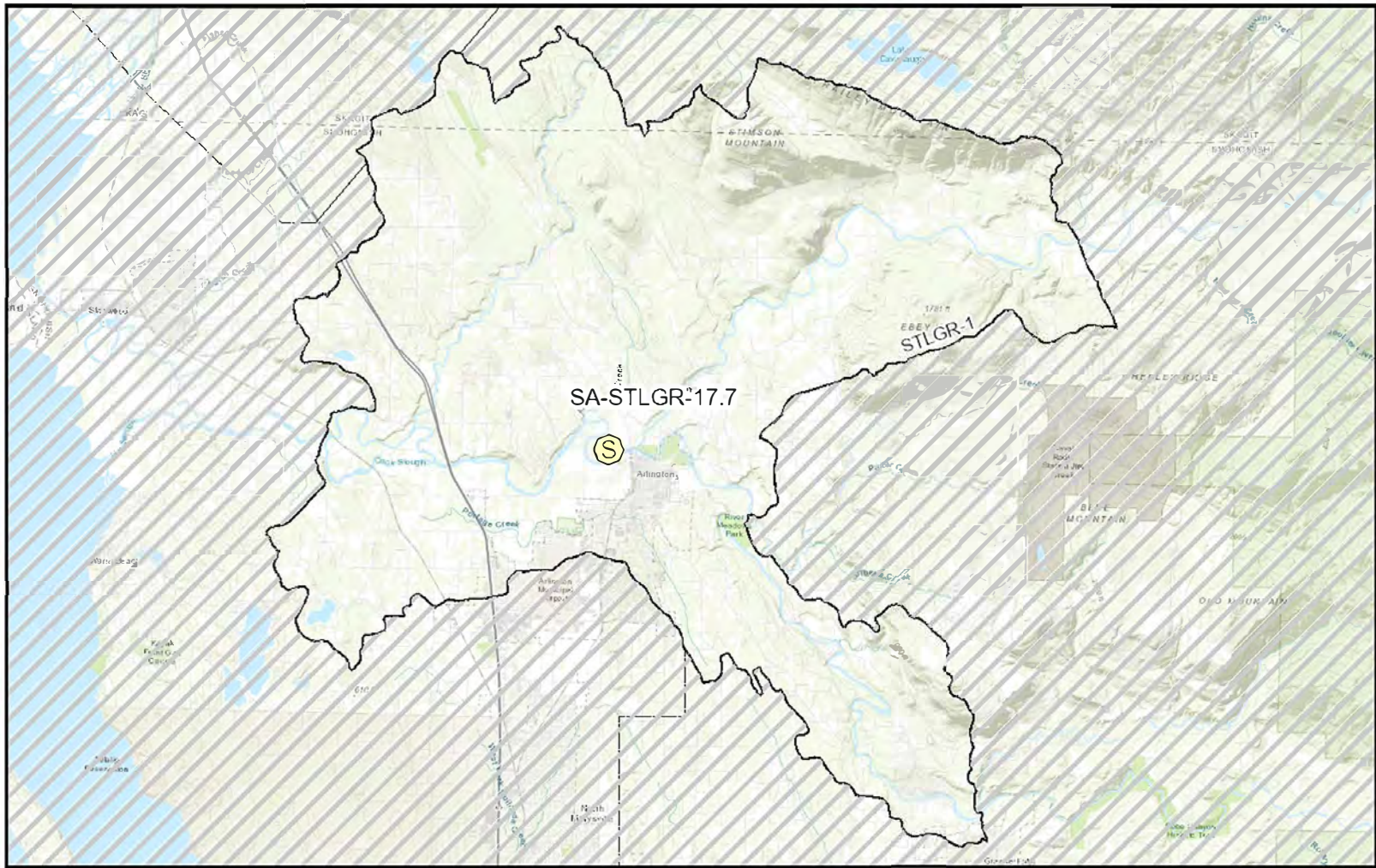
World Topographic Map: City of Arlington, WA, Bureau of Land Management, Esri Canada, Esri, HERE, Garmin, USGS, NGA, EPA, USDA, IIPS



● Notification Strategy Locations



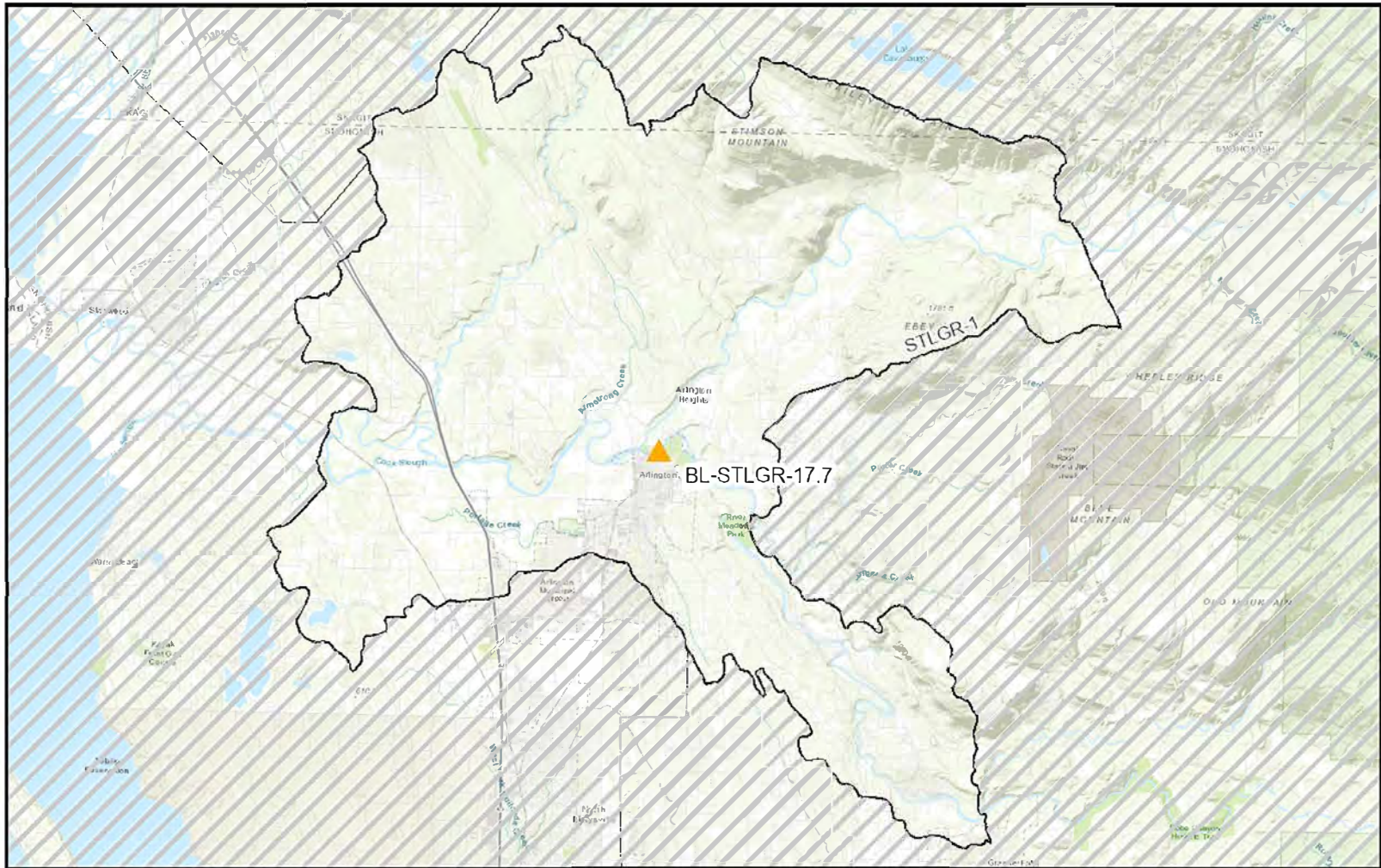
World Topographic Map: City of Arlington, WA, Bureau of Land Management, Esri Canada, Esri, HERE, Garmin, USGS, NGA, EPA, USDA, NPS



 Staging Area Locations



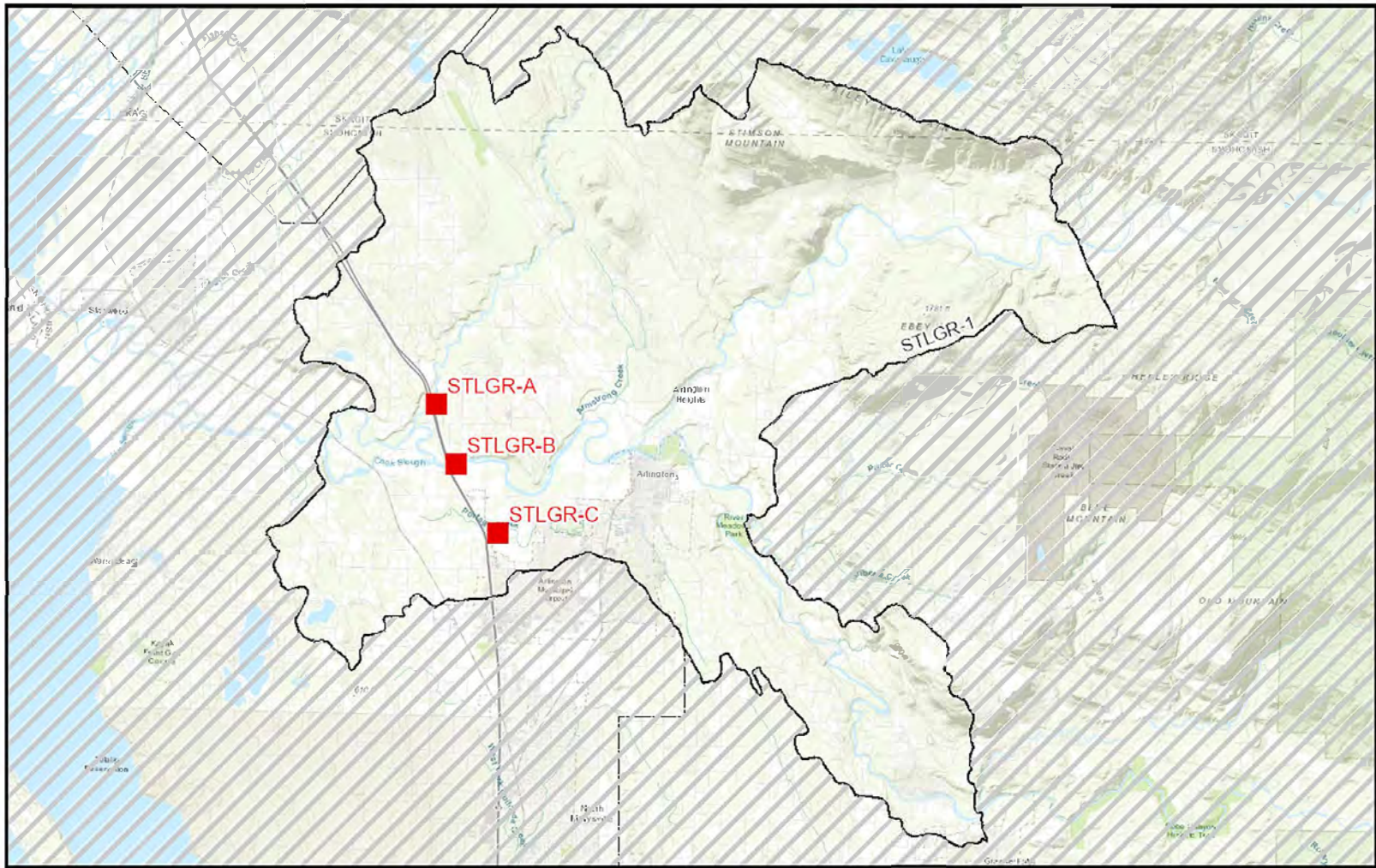
World Topographic Map: City of Arlington, WA, Bureau of Land Management, Esri Canada, Esri, HERE, Garmin, USGS, NGA, EPA, USDA, IIPS



▲ Boat Launch Locations



World Topographic Map: City of Arlington, WA, Bureau of Land Management, Esri Canada, Esri, HERE, Garmin, USGS, NGA, EPA, USDA, IIPS



■ Potential Oil Spill Points



World Topographic Map: City of Arlington, WA, Bureau of Land Management, Esri Canada, Esri, HERE, Garmin, USGS, NGA, EPA, USDA, IIPS

## STRATEGY AND RESPONSE PRIORITIES

### Strategy Priorities based on Potential Oil Spill Origin Points

Potential Oil Spill Origin Points (POSOPs) are geographic locations that have a defined list of response strategy implementation priorities provided in a table within this section. The placement of each POSOP is often based on spill risks in the area. Occasionally POSOPs are generalized to ensure implementation priorities are developed throughout an entire planning area.

These points are displayed on area overview and sector maps as red squares. In establishing priorities during a response, or selecting an appropriate POSOP, the downstream movement of spilled oil and the time it takes to mobilize and deploy response resources must be considered. Generally, on streams, creeks, and rivers, GRP strategies should first be implemented downstream, well beyond the furthest extent of the spill, with deployments continuing upstream towards the spill source and in some cases slightly beyond. POSOPs are alphabetically designated.

The following tables provide the strategy implementation order for Potential Oil Spill Origin Points in this GRP: points STLGR-A through STLGR-C. The priority tables provided in this section were developed using a combination of variables, including: notification time, travel time for responders and equipment, average and seasonal flow rates, average winds, deployment time, proximity to the spill source, trustee input, the relative priority of the resources at risk, and other considerations.

***Source control and containment are a higher priority than GRP strategy implementation.***

**Table 1: STLGR-A (BP Pipeline and I-5 Crossing Pilchuck Creek)**

<b>STLGR-A (Pilchuck Creek enters Stillaguamish River at RM 9.5)</b>					
<b>Implementation Priority</b>	<b>Strategy Number</b>	<b>Sector Map</b>	<b>Boom Length (Feet)</b>	<b>Strategy Details (Page #)</b>	<b>Comments</b>
1	HATS-1.75	NC-2	500	<a href="#">2-Page Link</a>	In <a href="#">North Central Puget Sound GRP</a>
2	STLGR-8.8	STLGR- 1	300		
3	PILC-0.1	STLGR-1	300		

Total Boom: 1100 ft.

**Table 2: STLGR-B (Confluence of N & S Forks of Stillaguamish River)**

<b>STLGR-B- (at Stillaguamish RM 18.0)</b>					
<b>Implementation Priority</b>	<b>Strategy Number</b>	<b>Sector Map</b>	<b>Boom Length (Feet)</b>	<b>Strategy Details (Page #)</b>	<b>Comments</b>
1	HATS-1.75	NC-2	500	<a href="#">2-Page Link</a>	In <a href="#">North Central Puget Sound GRP</a>
2	COOKS-0.2	STLGR-1	400		
3	STLGR-11.1	STLGR-1	500		

Total Boom: 1400 ft.

**Table 3: STLGR-C (Portage Creek at I-5)**

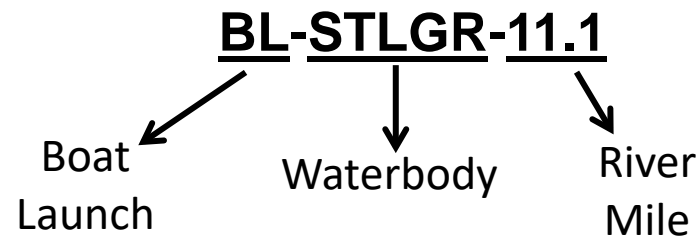
<b>STLGR-C (Portage Creek at ~RM 3, enters Stillaguamish River through Cooks Slough at RM 6)</b>					
<b>Implementation Priority</b>	<b>Strategy Number</b>	<b>Sector Map</b>	<b>Boom Length (Feet)</b>	<b>Strategy Details (Page #)</b>	<b>Comments</b>
1	HATS-1.75	NC-2	500	<a href="#">2-Page Link</a>	In <a href="#">North Central Puget Sound GRP</a>
2	PORTC-1.1	STLGR-1	200		
3	PORTC-3.6	STLGR-1	100		

Total Boom: 800 ft.

## MATRICES

### Naming Conventions (Short Names)

Each strategy, staging area, and boat launch location in this document has been given a unique “Short Name” which includes one to six letters denoting the associated waterbody. Following the letters are numbers that specify the location. On rivers or other linear waterbodies, the location is named by river mile: the distance from the mouth of the river or creek upstream to the site location. Notification strategies are indicated by an “-N” at the end of the name. Staging Areas and Boat Launches are indicated by the prefix “SA” or “BL”.



Associated river body short name designations used within the plan include:

COOKS = Cooks Slough	BL = Boat Launch
PILC = Pilchuck Creek	N = Notification Strategy
PORTC = Portage Creek	SA = Staging Area
SOS = South Slough	
STLGR = Stillaguamish River	
NFSTLGR = North Fork Stillaguamish River	
SFSTLGR = South Fork Stillaguamish River	

Strategy Name	Location	Strategy Type	Boom Length	Boat Req?	Staging Area	Resources At Risk	Comments	Sector Map	Strategy Details (Page#)
<b>COOKS-0.2</b>	Cooks Slough at Hevly Road 48.19722 -122.24363	Collection	Boom 400ft	Yes	Onsite Stage onsite at the parking area on the NE corner of the intersection of Hevly Rd and Pioneer Hwy	Hérons, Resident Fish, Salmonids, Waterfowl, Wetlands	Follow the short trail to the bridge to access shoreline and launch boat.	STLGR-1	25
<b>NFSTLGR-5.2</b>	North Fork Stillaguamish at Lind Rd 48.24955 -122.06152	Collection	Boom 400ft	Yes	Onsite Limited parking along the drive.	Resident Fish, Riparian Habitat, Salmonids, Wetlands	During low flow conditions you may be able to walk across the river in waders. Notify the Stillaguamish Tribe of deployment.	STLGR-1	27
<b>PILC-0.1</b>	Pilchuck Creek at 236th Street NE 48.21008 -122.22573	Collection	Boom 300ft	Yes	Onsite Stage onsite, parking on the SE side of the bridge.	Resident Fish, Salmonids, Waterfowl, Wetlands	Follow WSDOT work zone traffic control guidelines when working on or near roadway.	STLGR-1	29
<b>PILC-3.0</b>	Pilchuck Creek at Stanwood Bryant Road 48.23884 -122.20258	Collection	Boom 400ft	Yes	Onsite Stage onsite at small parking area on shoulder of the road.	Recreational Use Area, Resident Fish, Salmonids, Waterfowl, Wetlands	Shallow water during times of low flow. Follow WSDOT work zone traffic control guidelines when working on or near roadway.	STLGR-1	31

Strategy Name	Location	Strategy Type	Boom Length	Boat Req?	Staging Area	Resources At Risk	Comments	Sector Map	Strategy Details (Page#)
<b>PORTC-1.1</b>	Portage Creek at 212th Street NW 48.18835 -122.23350	Collection	Boom 200ft	No	Onsite Stage onsite	Resident Fish, Salmonids, Waterfowl, Wetlands	Use plywood to create walking path over vegetation. Follow WSDOT work zone traffic control guidelines when working on or near roadway.	STLGR-1	33
<b>PORTC-3.6</b>	Portage Creek at Smokey Point Boulevard 48.17844 -122.19351	Collection	Boom 100ft	No	Onsite Stage onsite on the NE side of the bridge away from the curve	Hérons, Resident Fish, Salmonids, Waterfowl, Wetlands	Limited roadside parking and blind curve. Follow WSDOT work zone traffic control guidelines when working on or near roadway.	STLGR-1	35
<b>SOS-5.15</b>	South Slough at I-5 48.18357 -122.19858	Collection	Boom 100ft	No	Onsite Stage onsite, gain access through the Arlington Chevrolet parking lot	Hérons, Resident Fish, Salmonids, Waterfowl, Wetlands	Coordinate with the Dwayne Lane's Arlington Chevrolet 360-474-3276 for parking then walk across field to access the site. Heavy vegetation and blackberries near waterway. Follow WSDOT work zone traffic control guidelines when working on or near roadway.	STLGR-1	37

Strategy Name	Location	Strategy Type	Boom Length	Boat Req?	Staging Area	Resources At Risk	Comments	Sector Map	Strategy Details (Page#)
<b>STLGR-11.1</b>	Stillaguamish River at 220th Street NE 48.19692 -122.20925	Collection	Boom 500ft	Yes	Onsite Stage onsite under the I-5 bridges, on the shoulder of Gulhegan Road (220th Street NE).	Resident Fish, Riparian Habitat, Salmonids, Waterfowl	Follow WSDOT work zone traffic control guidelines when working on or near roadway.	STLGR-1	39
<b>STLGR-17.7a</b>	Arlington Water Intake 48.20326 -122.12846	Exclusion	Boom 600ft	Yes	Onsite Stage equipment and launch boat at SA-STLGR-17.7.	City Park, Water Intakes	Drinking water wellfield draws water through the left (south) bank of mainstem and South Fork. This is a very popular park that may be crowded during the summer months and other city events. If necessary, coordinate with local law enforcement to clear the park.	STLGR-1	41

Strategy Name	Location	Strategy Type	Boom Length	Boat Req?	Staging Area	Resources At Risk	Comments	Sector Map	Strategy Details (Page#)
<b>STLGR-17.7b</b>	Stillaguamish River at Haller Park 48.20369 -122.12885	Collection	Boom 500ft	Yes	Onsite Stage at Haller Park.	Resident Fish, Riparian Habitat, Salmonids, Sensitive Resources Nearby, Water Intakes, Waterfowl	Deploy with STLGR-17.7a to protect water intake. Launch has a steep drop off and is not suitable for trailered boat. Busy park with playground and facilities. Popular water access point in the summer.	STLGR-1	43
<b>STLGR-8.8</b>	Stillaguamish River at Hevly Road 48.20236 -122.23406	Collection	Boom 300ft	Yes	Onsite Stage onsite, on Hevly Rd.	Habitat Restoration Site, Resident Fish, Salmonids, Sensitive Resources Nearby, Waterfowl, Wetlands	During low flow, side channel will be shallow enough to walk. During high flow, launch workboat in side channel. Follow WSDOT work zone traffic control guidelines when working on or near roadway.	STLGR-1	45

Strategy Name	Location	Strategy Type	Resources at Risk	Implementation	Comments	Sector Map	Strategy Details (Page#)
<b>NFSTLGR-28.4-N</b>	Whitehorse Rearing Ponds 48.26677 -121.93616	Notification	Fish Hatchery	Call the WDFW hatchery at 360-435-3206 and explain the situation regarding the spill.	Prevent fish from being released during a spill or protect salmon hatchery.	STLGR-1	49
<b>SFSTLGR-32.0-N</b>	Brenner Creek Hatchery 48.10089 -122.00363	Notification	Fish Hatchery	Call the Stillaguamish Tribe Fish Hatchery Manager at 360-399-9899 and explain the situation regarding the spill.	Prevent fish from being released during a spill or protect salmon hatchery.	STLGR-1	51
<b>STLGR-12.0-N</b>	Stillaguamish Tribe 48.20513 -122.26356	Notification	Tribal Lands/Resources	Call the Stillaguamish Tribe at 425-508-2765 (Police Department Emergency Number) so that they can deploy GRP strategies maintained by the Stillaguamish Tribe to protect Tribal Resources.	Notify the Stillaguamish Tribe of any spill that may impact the Stillaguamish watershed.	STLGR-1	53
<b>STLGR-15.2-N</b>	Harvey Creek Hatchery 48.21896 -122.13605	Notification	Fish Hatchery	Call the Stillaguamish Tribe Fish Hatchery Manager at 360-399-9899 and explain the situation regarding the spill.	Prevent fish from being released during a spill or protect salmon hatchery.	STLGR-1	55

Strategy Name	Location	Strategy Type	Resources at Risk	Implementation	Comments	Sector Map	Strategy Details (Page#)
<b>STLGR-16.0-N</b>	Marysville Water Intake 48.20737 -122.14145	Notification	Economic Resources, Public Health and Safety, Water Intakes	Call Marysville Public Works at 360-363-8100 (afterhours Utilities Emergency Number at 360-363-8350) about the spill so that they can take timely action to protect the resources under their control.	Notify Marysville Public Works about the spill so they can take timely action to protect their resources.	STLGR-1	57
<b>STLGR-18.0-N</b>	City of Arlington Water Intakes 48.20362 -122.12833	Notification	Economic Resources, Public Health and Safety, Water Intakes	Notify the City of Arlington Water Utilities by calling the water emergency on-call phone at 360-913-0323 (24/7) and the stormwater spill message number at 360-403-4600 to inform them of any spill that may impact Arlington's drinking water intakes.	Notify City of Arlington Water Utilities about spill so they can take timely action to protect their resources	STLGR-1	59

Strategy Name	Location	Position	Nearest Address	Contact	Strategies Served	Comments	Sector Map	Strategy Details (Page#)
SA-STLGR-17.7	Stillaguamish River at Haller Park	48.20295 -122.12886	1100 West Ave Arlington, WA 98223	City of Arlington Parks & Recreation 360-403-3448	STLGR-17.7b, STLGR-17.7a	Popular city park with restrooms and playground. Paved and gravel parking with river access. Boat launch not suitable for trailered boats. There	STLGR-1	63
				City of Arlington Public Works  360-403-3526				

Strategy Name	Name	Position	Nearest Address	Contact	Strategies Served	Comments	Sector Map	Strategy Details (Page#)
BL-STLGR-17.7	Stillaguamish River at Haller Park	48.20295 -122.12886	1100 West Ave Arlington, WA 98223	City of Arlington Parks & Recreation 360-403-3448	STLGR-17.7b, STLGR-17.7a	Ramp suitable for hand-launch vessels only. Steep drop off at end of ramp.	STLGR-1	67
				City of Arlington Public Works  360-403-3526				

**This page was intentionally left blank**

**APPENDIX A**  
**Response Strategy 2-Pagers**

# Cooks Slough at Hevly Road

COOKS-0.2

**Position - Location:** 48° 11.833', -122° 14.618'      48° 11' 50.0", -122° 14' 37.1"      48.19722, -122.24363      Arlington

**Strategy Objective:** Collection : Collect oil moving downstream on Cook Slough

**Implementation:** Using hand-launch workboat, secure 400 ft boom to right bank near the parking area. Extend boom to left bank and secure to shore. On right bank, pull boom slightly downstream and secure to shore to form a collection pocket. Use shoreside anchoring systems or existing features to secure boom to banks. Adjust boom angle and anchor points as needed for conditions. Position vac truck in parking area for collection.

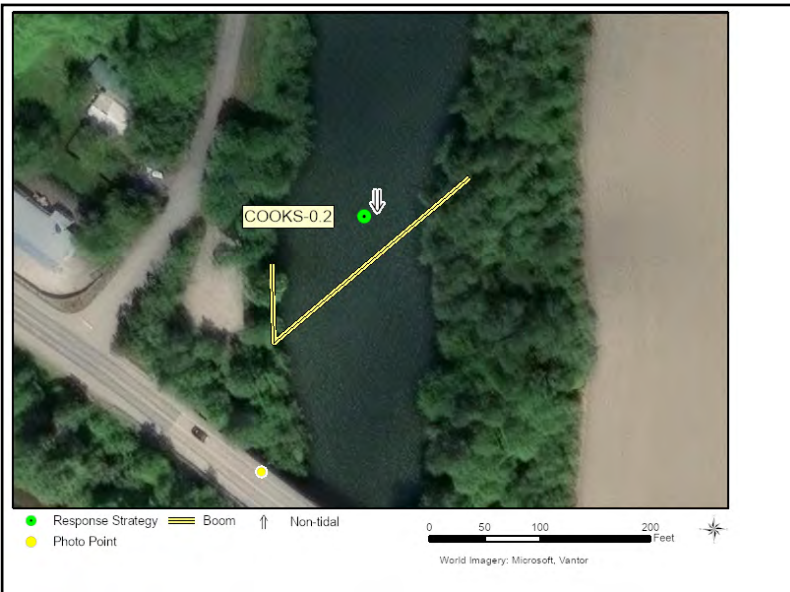
**Staging Area:** Onsite: Stage onsite at the parking area on the NE corner of the intersection of Hevly Rd and Pioneer Hwy

**Site Safety:** Slips, Trips, Falls; Water Hazard

**Field Notes:** Follow the short trail to the bridge to access shoreline and launch boat.

**Watercourse:** Slough - Cook Slough

**Resources at Risk:** Herons, Resident Fish, Salmonids, Waterfowl, Wetlands



## Recommended Equipment

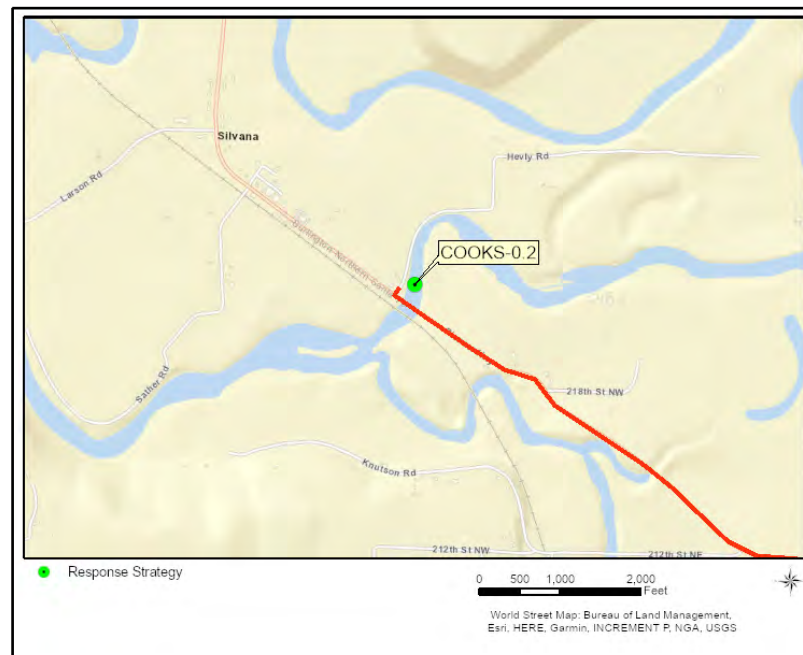
2	Each	Anchoring System(s) - (anchor, lines, floats)
3	Each	Anchoring System(s)- Shoreside
400	Feet	Boom - B3 (River Boom) or equivalent
1	Each	Machete(s) - (or other vegetation cutting tool)
1	Each	Vac Truck or Skimmer and Storage
1	Each	Workboat(s) - (hand-launch)

## Recommended Personnel

1	Boat Operator
2	Laborer
1	Supervisor



COOKS-0.2 Photo: Looking upstream on Cooks Slough from the right bank under Pioneer Hwy bridge.



### Site Contact

**Washington Department of Fish and Wildlife**  
Land/Property Contact : Region 4  
425-775-1311

### Nearest Address

932 Hevly Rd  
Arlington, WA 98223

### Driving Directions

#### DIRECTIONS TO STRATEGY

1. Head north from Seattle on I-5 North
2. At exit 202 bear right onto ramp to 116th St. N.E. (0.23 miles)
3. Turn left on 116th St NE (0.13 miles)
4. Turn left onto ramp and go on I-5 N toward Vancouver B.C. (5.96 miles)
5. At exit 208 take ramp on the right to WA-530 toward Arlington / Darrington (0.24 miles)
6. Turn left on WA-530 (0.13 miles)
7. Continue on Pioneer Hwy E (2.06 miles)
8. Make sharp right on Hevly Rd (0.02 miles)
9. Finish at 932 Hevly Rd, 98223, on the right

# North Fork Stillaguamish at Lind Rd

NFSTLGR-5.2

**Position - Location:** 48° 14.973', -122° 3.691'      48° 14' 58.4", -122° 3' 41.5"      48.24955, -122.06152      Arlington

**Strategy Objective:** Collection : Collect oil moving downstream on the North Fork Stillaguamish River

**Implementation:** Using hand-launch workboat, secure 400 ft boom to left bank. Extend boom to right bank and secure to shore. On left bank, pull boom slightly downstream and secure to shore to form a collection pocket. Use shoreside anchoring systems or existing features to secure boom to banks. Adjust boom angle and anchor points as needed for conditions. Position vac truck at end of the drive for collection.

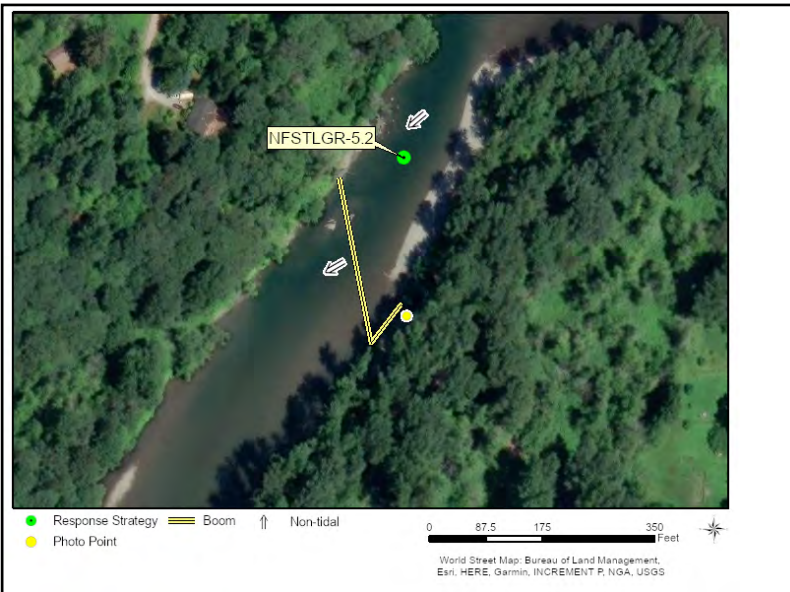
**Staging Area:** Onsite: Limited parking along the drive.

**Site Safety:** Slips, Trips, Falls; Water Hazard; Uneven Terrain; Muddy Conditions

**Field Notes:** During low flow conditions you may be able to walk across the river in waders. Notify the Stillaguamish Tribe of deployment.

**Watercourse:** River - North Fork Stillaguamish River

**Resources at Risk:** Resident Fish, Riparian Habitat, Salmonids, Wetlands



## Recommended Equipment

3	Each	Anchoring System(s) - (anchor, lines, floats)
3	Each	Anchoring System(s)- Shoreside
400	Feet	Boom - B3 (River Boom) or equivalent
1	Each	Vac Truck or Skimmer and Storage
1	Each	Waders
1	Each	Workboat(s) - (hand-launch)

## Recommended Personnel

1	Boat Operator
2	Laborer
1	Supervisor



NFSTLGR-5.2 Photo: River access site off Lind Rd in Arlington on the North Fork Stillaguamish River. Looking upstream on the left bank.

### Site Contact

**Stillaguamish Tribe Police Department**  
Tribal Contact : Emergency Contact

Arlington, WA  
425-508-2765

### Nearest Address

27613 Lind Rd  
Arlington, WA 98223



### Driving Directions

#### DIRECTIONS TO STRATEGY

1. From I-5 take exit 208 to WA-530 E toward Arlington / Darrington
2. At the traffic light, turn east on State Route 530 NE (WA-530)
3. At the traffic light, turn left on State Route 9 NE
4. Take the immediate exit on the right to merge onto State Route 530 NE (WA-530)
5. Turn left on 127th Ave NE (Kroeze Rd)
6. Drive past the Whitehorse Trail crossing
7. Take the gravel drive just the trail on the left to the river access area

# Pilchuck Creek at 236th Street NE

PILC-0.1

**Position - Location:** 48° 12.605', -122° 13.544'      48° 12' 36.3", -122° 13' 32.6"      48.21008, -122.22573      Arlington

**Strategy Objective:** Collection : Collect oil moving downstream on Pilchuck Creek

**Implementation:** Secure 300 ft of boom to the right bank. Use bridge to cross creek and extend boom upstream to the opposite bank. Anchor to left bank upstream of bridge. On right bank, pull boom further downstream and anchor to shore downstream of bridge to form a collection pocket. Use shoreside anchoring systems or existing features to secure boom to banks. Adjust boom angle and anchor points as needed for conditions. Position vac truck on bridge for collection.

**Staging Area:** Onsite: Stage onsite, parking on the SE side of the bridge.

**Site Safety:** Slips, Trips, Falls; Water Hazard; Heavy Vegetation; Traffic

**Field Notes:** Follow WSDOT work zone traffic control guidelines when working on or near roadway.

**Watercourse:** Creek - Pilchuck Creek

**Resources at Risk:** Resident Fish, Salmonids, Waterfowl, Wetlands



## Recommended Equipment

2	Each	Anchoring System(s) - (anchor, lines, floats)
3	Each	Anchoring System(s)- Shoreside
300	Feet	Boom - B3 (River Boom) or equivalent
1	Each	Machete(s) - (or other vegetation cutting tool)
1	Each	Vac Truck or Skimmer and Storage
1	Each	Workboat(s) - (hand-launch)

## Recommended Personnel

1	Boat Operator
2	Laborer
1	Supervisor



PILC-0.1 Photo: Pilchuck Creek from under 236th St NE bridge.



**Site Contact**

**Washington Dept. of Transportation**  
 Land/Property Contact : Northwest Region  
 206-440-4000

**Nearest Address**

362 236th St NE  
 Arlington, WA 98223

**Driving Directions**

**DIRECTIONS TO STRATEGY**

1. Head north from Seattle on I-5 North
2. At exit 202 bear right onto ramp to 116th St. N.E. (0.23 miles)
3. Turn left on 116th St NE (0.13 miles)
4. Turn left onto ramp and go on I-5 N toward Vancouver B.C. (7.6 miles)
5. At exit 210 take ramp on the right to 236th St. N.E. (0.26 miles)
6. Turn left on 236th St NE (0.51 miles)
7. Finish at 362 236th St NE, 98223, on the left

# Pilchuck Creek at Stanwood Bryant Road

PILC-3.0

**Position - Location:** 48° 14.330', -122° 12.155'      48° 14' 19.8", -122° 12' 9.3"      48.23884, -122.20258      Arlington

**Strategy Objective:** Collection : Collect oil moving downstream on Pilchuck Creek

**Implementation:** Using hand launch workboat, secure 400 ft boom to left bank of creek at upstream end of the clearing. Extend boom upstream to opposite bank. Secure boom to right bank. On left bank, pull boom slightly downstream and secure to shore to form a collection pocket. Use shoreside anchoring systems or existing features to secure boom to banks. Adjust boom angle and anchor points as needed for conditions. Position vac truck on shoulder of road for collection.

**Staging Area:** Onsite: Stage onsite at small parking area on shoulder of the road.

**Site Safety:** Slips, Trips, Falls; Water Hazard; Heavy Vegetation; Traffic

**Field Notes:** Shallow water during times of low flow. Follow WSDOT work zone traffic control guidelines when working on or near roadway.

**Watercourse:** Creek - Pilchuck Creek

**Resources at Risk:** Recreational Use Area, Resident Fish, Salmonids, Waterfowl, Wetlands



## Recommended Equipment

3 Each	Anchoring System(s) - (anchor, lines, floats)
3 Each	Anchoring System(s)- Shoreside
400 Feet	Boom - B3 (River Boom) or equivalent
1 Each	Machete(s) - (or other vegetation cutting tool)
1 Each	Vac Truck or Skimmer and Storage
1 Each	Workboat(s) - (hand-launch)

## Recommended Personnel

1	Boat Operator
2	Laborer
1	Supervisor



PILC-3.0 Photo: Pilchuck Creek at Stanwood Bryant Road access looking north.



**Site Contact**

**No Information**  
Not Determined :

**Nearest Address**

1924 Stanwood-Bryant Rd  
Arlington, WA 98223

**Driving Directions**

**DIRECTIONS TO STRATEGY**

1. Head north from Seattle on I-5 North
2. At exit 202 bear right onto ramp to 116th St. N.E. (0.23 miles)
3. Turn left on 116th St NE (0.13 miles)
4. Turn left onto ramp and go on I-5 N toward Vancouver B.C. (9.95 miles)
5. At exit 212 take ramp on the right to WA-532 W toward Stanwood / Camano Is. (0.26 miles)
6. Turn right on Stanwood-Bryant Rd (2.1 miles)
7. Finish at 1924 Stanwood-Bryant Rd, 98223, on the left

# Portage Creek at 212th Street NW

PORTC-1.1

**Position - Location:** 48° 11.301', -122° 14.010'      48° 11' 18.1", -122° 14' .6"      48.18835, -122.23350      Arlington

**Strategy Objective:** Collection : Collect oil moving downstream on Portage Creek

**Implementation:** Secure 200 ft of boom across the creek on the upstream side of the bridge. Use shoreside anchoring systems or existing features to secure boom to banks. Adjust boom angle and anchor points as needed for conditions. Position vac truck on bridge for collection. Place plywood over vegetation to create walking path.

**Staging Area:** Onsite: Stage onsite

**Site Safety:** Traffic; Slips, Trips, Falls; Water Hazard; Overgrown Vegetation

**Field Notes:** Use plywood to create walking path over vegetation. Follow WSDOT work zone traffic control guidelines when working on or near roadway.

**Watercourse:** Creek - Portage Creek

**Resources at Risk:** Resident Fish, Salmonids, Waterfowl, Wetlands



## Recommended Equipment

1	Each	Anchoring System(s) - (anchor, lines, floats)
2	Each	Anchoring System(s)- Shoreside
200	Feet	Boom - B3 (River Boom) or equivalent
100	Feet	Line - 3/8" poly line
1	Each	Machete(s) - (or other vegetation cutting tool)
2	Each	Plywood sheets (4ft x 8ft)

## Recommended Personnel

2	Laborer
1	Supervisor



PORTC-1.1 Photo: Portage Creek looking north from the 212th St NW bridge.



**Site Contact**

**Washington Dept. of Transportation**  
Land/Property Contact : Northwest Region  
206-440-4000

**Nearest Address**

301 212th St NW  
Arlington, WA 98223

**Driving Directions**

**DIRECTIONS TO STRATEGY**

1. Head north from Seattle on I-5 North
2. At exit 202 bear right onto ramp to 116th St. N.E. (0.23 miles)
3. Turn left on 116th St NE (0.13 miles)
4. Turn left onto ramp and go on I-5 N toward Vancouver B.C. (5.96 miles)
5. At exit 208 take ramp on the right to WA-530 toward Arlington / Darrington (0.24 miles)
6. Turn left on WA-530 (0.13 miles)
7. Continue on Pioneer Hwy E (1.05 miles)
8. Turn left on 212th St NE (0.4 miles)
9. Finish at the bridge just before you reach 301 212th St NW, 98223

# Portage Creek at Smokey Point Boulevard

PORTC-3.6

**Position - Location:** 48° 10.706', -122° 11.611'      48° 10' 42.4", -122° 11' 36.6"      48.17844, -122.19351      Arlington

**Strategy Objective:** Collection : Collect oil moving downstream on Portage Creek

**Implementation:** Secure 100 ft of boom on the upstream side of the bridge on creek left. Walk boom across the bridge, securing it below on creek right. Use shoreside anchoring systems or existing features to secure boom to banks. Adjust boom angle and anchor points as needed for conditions. Position vac truck on bridge for collection.

**Staging Area:** Onsite: Stage onsite on the NE side of the bridge away from the curve

**Site Safety:** Slips, Trips, Falls; Water Hazard; Traffic; Narrow Bridge; Heavy Vegetation

**Field Notes:** Limited roadside parking and blind curve. Follow WSDOT work zone traffic control guidelines when working on or near roadway.

**Watercourse:** Creek - Portage Creek

**Resources at Risk:** Herons, Resident Fish, Salmonids, Waterfowl, Wetlands



## Recommended Equipment

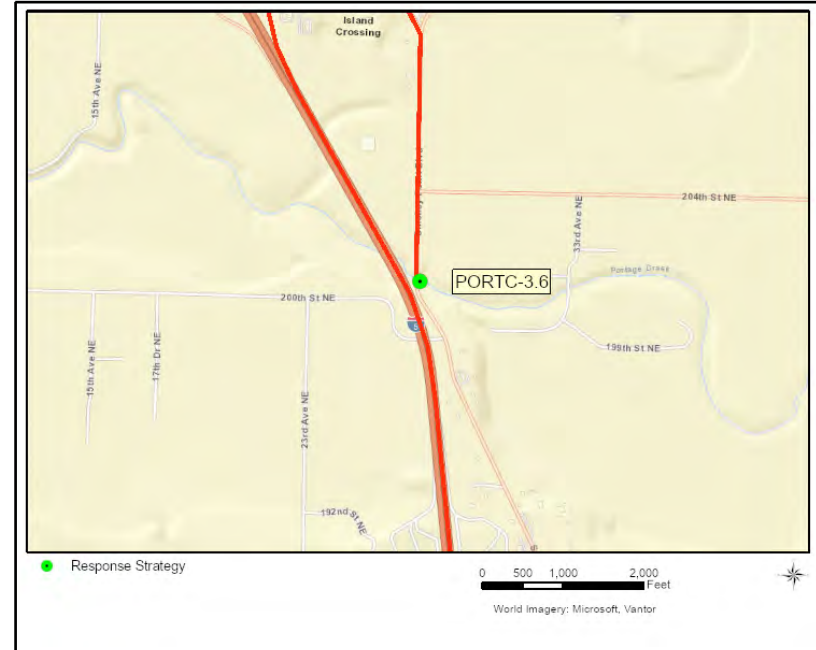
2	Each	Anchoring System(s)- Shoreside
100	Feet	Boom - B3 (River Boom) or equivalent
100	Feet	Line - 3/8" poly line
1	Each	Machete(s) - (or other vegetation cutting tool)
1	Each	Vac Truck or Skimmer and Storage

## Recommended Personnel

2	Laborer
1	Supervisor



PORTC-3.6 Photo: Portage Creek looking east from Smokey Point Blvd bridge.



## Site Contact

**Washington Dept. of Transportation**  
Land/Property Contact : Northwest Region  
206-440-4000

## Nearest Address

19829 Smokey Point Blvd  
Arlington, WA 98223

## Driving Directions

### DIRECTIONS TO STRATEGY

1. Head north from Seattle on I-5 North
2. At exit 208 take ramp on the right to WA-530 toward Arlington / Darrington (0.24 miles)
3. Turn right on WA-530 NE (State Route 530 NE) (0.27 miles)
4. At fork keep right on Smokey Point Blvd (0.7 miles)
5. Finish at the bridge over Portage Creek at 19829 Smokey Point Blvd, 98223

# South Slough at I-5

SOS-5.15

**Position - Location:** 48° 11.014', -122° 11.915'      48° 11' .9", -122° 11' 54.9"      48.18357, -122.19858      Arlington

**Strategy Objective:** Collection : Collect oil moving downstream on South Slough

**Implementation:** Secure 100 ft of boom across the culvert. Use shoreside anchoring systems or existing features to secure boom to banks. Adjust boom angle and anchor points as needed for conditions. Position vac truck above culvert on shoulder of I-5 North for collection.

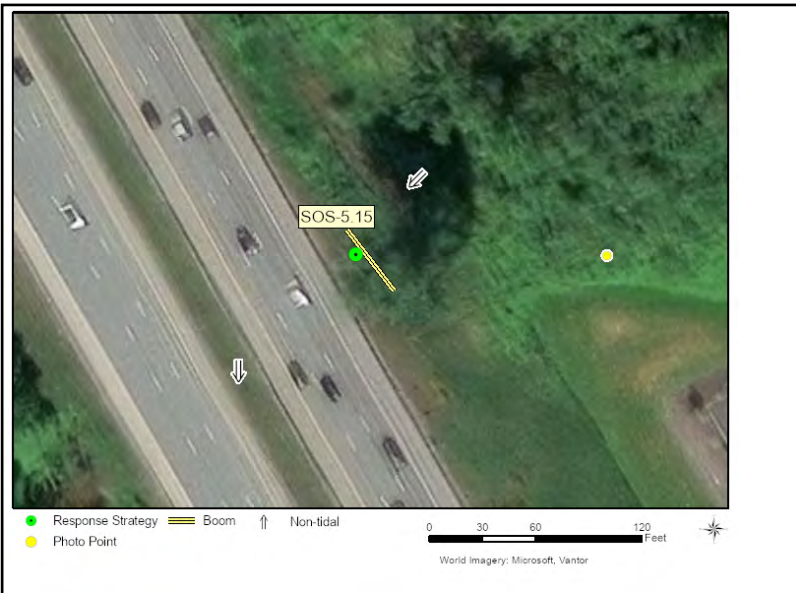
**Staging Area:** Onsite: Stage onsite, gain access through the Arlington Chevrolet parking lot

**Site Safety:** Slips, Trips, Falls; Overgrown Vegetation; Traffic; Water Hazard

**Field Notes:** Coordinate with the Dwayne Lane’s Arlington Chevrolet 360-474-3276 for parking then walk across field to access the site. Heavy vegetation and blackberries near waterway. Follow WSDOT work zone traffic control guidelines when working on or near roadway.

**Watercourse:** Slough - South Slough

**Resources at Risk:** Herons, Resident Fish, Salmonids, Waterfowl, Wetlands



## Recommended Equipment

2 Each	Anchoring System(s)- Shoreside
100 Feet	Boom - B3 (River Boom) or equivalent
1 Each	Machete(s) - (or other vegetation cutting tool)
1 Each	Vac Truck or Skimmer and Storage
1 Each	Waders

## Recommended Personnel

2	Laborer
1	Supervisor



# Stillaguamish River at Hevly Road

STLGR-8.8

**Position - Location:** 48° 12.142', -122° 14.044'      48° 12' 8.5", -122° 14' 2.6"      48.20236, -122.23406      Arlington

**Strategy Objective:** Collection : Collect oil moving downstream on Stillaguamish River

**Implementation:** Using hand launch workboat, secure 300 ft of boom to bank on river left. Extend boom upstream, securing it to shore on river right. On left bank, pull boom slightly downstream and anchor to form a collection pocket. Use natural features to secure boom to banks. Adjust boom angle and anchor points as needed for conditions. Position vac truck on bridge over side channel.

**Staging Area:** Onsite: Stage onsite, on Hevly Rd.

**Site Safety:** Slips, Trips, Falls; Water Hazard; Heavy Vegetation; Traffic

**Field Notes:** During low flow, side channel will be shallow enough to walk. During high flow, launch workboat in side channel. Follow WSDOT work zone traffic control guidelines when working on or near roadway.

**Watercourse:** River - Stillaguamish River

**Resources at Risk:** Habitat Restoration Site, Resident Fish, Salmonids, Sensitive Resources Nearby, Waterfowl, Wetlands



## Recommended Equipment

2	Each	Anchoring System(s) - (anchor, lines, floats)
3	Each	Anchoring System(s)- Shoreside
300	Feet	Boom - B3 (River Boom) or equivalent
1	Each	Machete(s) - (or other vegetation cutting tool)
1	Each	Vac Truck or Skimmer and Storage
1	Each	Workboat(s) - (hand-launch)

## Recommended Personnel

1	Boat Operator
2	Laborer
1	Supervisor



STLGR-8.8 Photo: Stillaguamish River looking north from Hevly Road.



### Site Contact

**No Information**  
Not Determined :

### Nearest Address

408 Hevly Rd  
Arlington, WA 98223

### Driving Directions

#### DIRECTIONS TO STRATEGY

1. Head north from Seattle on I-5 North
2. At exit 202 bear right onto ramp to 116th St. N.E. (0.23 miles)
3. Turn left on 116th St NE (0.13 miles)
4. Turn left onto ramp and go on I-5 N toward Vancouver B.C. (5.96 miles)
5. At exit 208 take ramp on the right to WA-530 toward Arlington / Darrington (0.24 miles)
6. Turn left on WA-530 (0.13 miles)
7. Continue on Pioneer Hwy E (2.06 miles)
8. Make sharp right on Hevly Rd (0.69 miles)
9. Drive past 408 Hevly Rd, 98223, to stop at the bridge

# Stillaguamish River at 220th Street NE

STLGR-11.1

**Position - Location:** 48° 11.815', -122° 12.555'      48° 11' 48.9", -122° 12' 33.3"      48.19692, -122.20925      Arlington

**Strategy Objective:** Collection : Collect oil moving downstream on Stillaguamish River

**Implementation:** Using hand launch workboat, secure 500 ft of boom to bank on the left bank under the bridge. Extend boom upstream across the channel, use winch if necessary. Secure to left bank at the upstream end of the sand bar. Deploy additional anchors mid-channel to maintain optimal boom angle. Use shoreside anchoring systems or existing features to secure boom to banks. Adjust boom angle and anchor points as needed for conditions. Position vac truck in parking area under bridge for collection.

**Staging Area:** Onsite: Stage onsite under the I-5 bridges, on the shoulder of Gulhegan Road (220th Street NE).

**Site Safety:** Slips, Trips, Falls; Water Hazard; Traffic

**Field Notes:** Follow WSDOT work zone traffic control guidelines when working on or near roadway.

**Watercourse:** River - Stillaguamish River

**Resources at Risk:** Resident Fish, Riparian Habitat, Salmonids, Waterfowl



## Recommended Equipment

4 Each	Anchoring System(s) - (anchor, lines, floats)
2 Each	Anchoring System(s)- Shoreside
500 Feet	Boom - B3 (River Boom) or equivalent
1 Each	Machete(s) - (or other vegetation cutting tool)
1 Each	Vac Truck or Skimmer and Storage
1 Each	Winch - Come-A-Long
1 Each	Workboat(s) - (hand-launch)

## Recommended Personnel

1	Boat Operator
2	Laborer
1	Supervisor



STLGR-11.1 Photo: Stillaguamish River just upstream of the I-5 bridges in Arlington looking north.



### Site Contact

**Washington Department of Fish and Wildlife**  
Land/Property Contact : Region 4  
425-775-1311

### Nearest Address

1167 220th St NE  
Arlington, WA 98223

### Driving Directions

#### DIRECTIONS TO STRATEGY

1. Head north from Seattle on I-5 North
2. At exit 202 bear right onto ramp to 116th St. N.E. (0.23 miles)
3. Turn left on 116th St NE (0.13 miles)
4. Turn left onto ramp and go on I-5 N toward Vancouver B.C. (5.96 miles)
5. At exit 208 take ramp on the right to WA-530 toward Arlington / Darrington (0.24 miles)
6. Turn left on WA-530 (0.13 miles)
7. Continue on Pioneer Hwy E (0.78 miles)
8. Turn right on 7th Ave NE (Gulhagen Rd) (0.5 miles)
9. Bear right on 220th St NE (0.55 miles)
10. Finish at 1167 220th St NE, 98223, on the left underneath the I-5 bridges.

# Arlington Water Intake

STLGR-17.7a

**Position - Location:** 48° 12.196', -122° 7.708'      48° 12' 11.7", -122° 7' 42.5"      48.20326, -122.12846      Arlington

**Strategy Objective:** Exclusion : Protect the shoreline from oiling to avoid contaminating the drinking water wellfield.

**Implementation:** Secure 600 ft of boom to shoreline on upstream side of the boat launch ramp. Pull boom upstream, along the shoreline around the river bend to the S. Fork river channel. Use workboat to pull boom off the shoreline and anchor at a suitable depth. Notify City of Arlington to coordinate response actions with city staff.

**Staging Area:** Onsite: Stage equipment and launch boat at SA-STLGR-17.7.

**Site Safety:** Swift Currents; Slips, Trips, Falls; Water Hazard; Uneven Terrain; Muddy Conditions; Steep Banks; Overgrown Vegetation; Public Beach

**Field Notes:** Drinking water wellfield draws water through the left (south) bank of mainstem and South Fork. This is a very popular park that may be crowded during the summer months and other city events. If necessary, coordinate with local law enforcement to clear the park.

**Watercourse:** River - Stillaguamish River

**Resources at Risk:** City Park, Water Intakes



## Recommended Equipment

5 Each	Anchoring System(s) - (anchor, lines, floats)
2 Each	Anchoring System(s)- Shoreside
600 Feet	Boom - B3 (River Boom) or equivalent
1 Each	Workboat(s) - (hand-launch)

## Recommended Personnel

1	Boat Operator
3	Laborer
1	Supervisor



STLGR-17.7a Photo: Left bank of Stillaguamish River at Haller Park taken from Centennial Trail Bridge.



## Site Contact

### City of Arlington Water Emergency

Emergency Contact : On-Call Phone (24/7)  
360-913-0323

### City of Arlington Stormwater Spill Reporting

Emergency Contact : Message number  
360-403-4600

## Nearest Address

1100 N. West Ave  
Arlington, WA 98223

## Driving Directions

### DIRECTIONS TO STRATEGY

1. From I-5 exit 208 on the right to WA-530 E toward Arlington / Darrington
2. At the traffic light, turn east on State Route 530 NE (WA-530) (3.78 miles)
3. At the traffic light, turn left on State Route 9 NE (0.08 miles)
4. Take the exit on the right to merge onto W Burke Ave (WA-530) (0.14 miles)
5. Turn left on N West Ave (0.11 miles)
6. Turn left on W Cox Ave (0.03 miles)
7. Finish at 1100 N. West Ave, 98223, on the right

# Stillaguamish River at Haller Park

STLGR-17.7b

**Position - Location:** 48° 12.221', -122° 7.731'      48° 12' 13.3", -122° 7' 43.9"      48.20369, -122.12885      Arlington

**Strategy Objective:** Collection : Collect oil moving downstream on Stillaguamish River

**Implementation:** Secure 500 ft of boom to the upstream side of the boat launch ramp on the left bank. Use hand launch workboat to extend boom to opposite bank. Secure to shore near the Centennial Trail bridge on right bank. Do not anchor to bridge structure. On the left bank, pull boom downstream across the ramp and secure boom to shore to form a collection pocket. Use shoreside anchoring systems or existing features to secure boom to banks. Adjust boom angle and anchor points as needed for conditions. Position vac truck on boat launch ramp for collection.

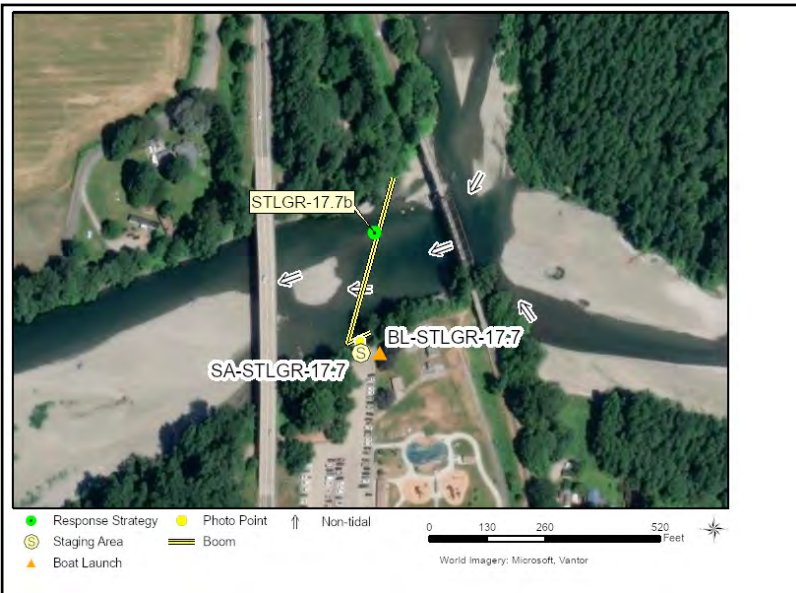
**Staging Area:** Onsite: Stage at Haller Park.

**Site Safety:** Slips, Trips, Falls; Swift Currents; Water Hazard

**Field Notes:** Deploy with STLGR-17.7a to protect water intake. Launch has a steep drop off and is not suitable for trailered boat. Busy park with playground and facilities. Popular water access point in the summer.

**Watercourse:** River - Stillaguamish River

**Resources at Risk:** Resident Fish, Riparian Habitat, Salmonids, Sensitive Resources Nearby, Water Intakes, Waterfowl



## Recommended Equipment

4 Each	Anchoring System(s) - (anchor, lines, floats)
3 Each	Anchoring System(s)- Shoreside
500 Feet	Boom - B3 (River Boom) or equivalent
1 Each	Vac Truck or Skimmer and Storage
1 Each	Workboat(s) - (hand-launch)

## Recommended Personnel

1	Boat Operator
3	Laborer
1	Supervisor



STLGR-17.7b Photo: Looking towards the Centennial Trail bridge from the Haller Park Boat Launch in Arlington.



### Site Contact

**City of Arlington**  
Land/Property Contact : Parks & Recreation  
360-403-3448

**City of Arlington Water Emergency**  
Emergency Contact : On-Call Phone (24/7)  
360-913-0323

### Nearest Address

1100 N. West Ave  
Arlington, WA 98223

### Driving Directions

#### DIRECTIONS TO STRATEGY

1. From I-5 exit 208 on the right to WA-530 E toward Arlington / Darrington
2. At the traffic light, turn east on State Route 530 NE (WA-530) (3.78 miles)
3. At the traffic light, turn left on State Route 9 NE (0.08 miles)
4. Take the exit on the right to merge onto W Burke Ave (WA-530) (0.14 miles)
5. Turn left on N West Ave (0.11 miles)
6. Turn left on W Cox Ave (0.03 miles)
7. Finish at 1100 N. West Ave, 98223, on the right

**This page was intentionally left blank**

**APPENDIX B**  
**Notification Strategy 2-Pagers**

# Whitehorse Rearing Ponds

NFSTLGR-28.4-N

**Position - Location:** 48° 16.006', -121° 56.170'      48° 16' .4", -121° 56' 10.2"      48.26677, -121.93616      Arlington

**Strategy Objective:** Notification : Prevent fish from being released during a spill or protect salmon hatchery.

**Implementation:** Call the WDFW hatchery at 360-435-3206 and explain the situation regarding the spill.

**Field Notes:** Hatchery uses spring well water.

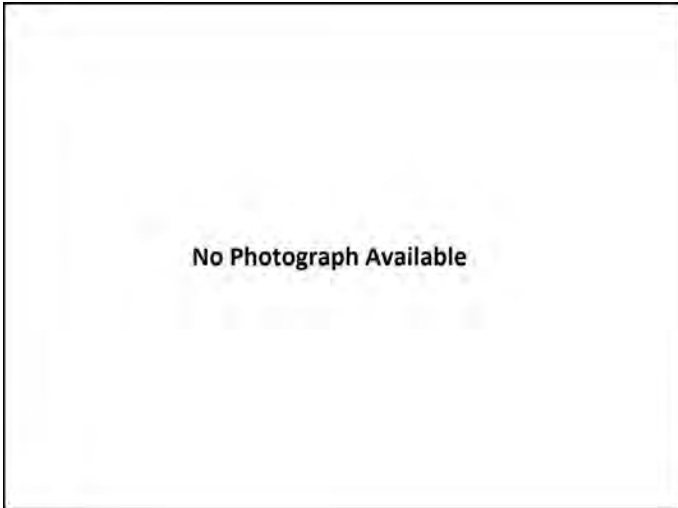
**Watercourse:** River - North Fork Stillaguamish River

**Resources at Risk:** Fish Hatchery

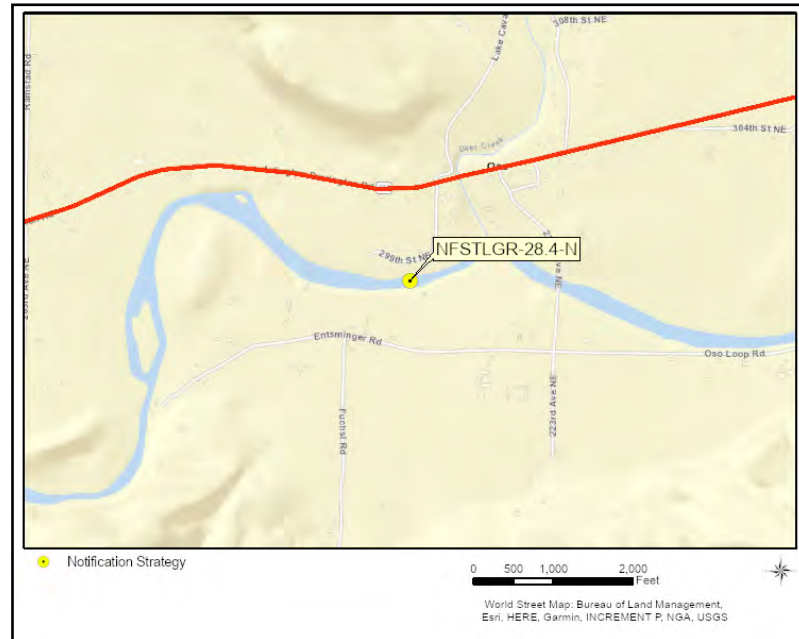


## Communication Process and Action:

Call the WDFW hatchery at 360-435-3206 and explain the situation regarding the spill. Advise they consider delaying fish releases until the situation is resolved. If you are unable to reach the hatchery, call the hatchery manager at 253-303-3620 or the WDFW Region 4 office at 425-775-1311.



NFSTLGR-28.4-N Photo: No photo available



### Site Contact

#### WDFW Whitehorse Rearing Ponds

Land/Property Contact :  
360-436-1259

#### WDFW Whitehorse Hatchery

Emergency Contact : Hatchery Manager  
253-303-3620

### Nearest Address

30722 379th Ave  
Arlington, WA 98223

### Driving Directions

#### DIRECTIONS TO HATCHERY

1. From Arlington, go east on State Route 530 NE (WA-530)
3. At the traffic light, turn left on State Route 9 NE (0.08 miles)
4. Take the exit on the right to merge onto State Route 530 NE (WA-530) (22.12 miles)
5. Turn left on 379th Ave NE (0.49 miles)
6. Turn left (0.02 miles)
7. Finish at 30722 379th Ave, 98223, on the left

# Brenner Creek Hatchery

SFSTLGR-32.0-N

**Position - Location:** 48° 6.053', -122° .218' 48° 6' 3.2", -122° 0' 13.1" 48.10089, -122.00363 Granite Falls

**Strategy Objective:** Notification : Prevent fish from being released during a spill or protect salmon hatchery.

**Implementation:** Call the Stillaguamish Tribe Fish Hatchery Manager at 360-399-9899 and explain the situation regarding the spill.

**Field Notes:** Facility hosts a fall Chinook captive brood program. No surface water intake for the hatchery. Water is sourced from a spring water well.

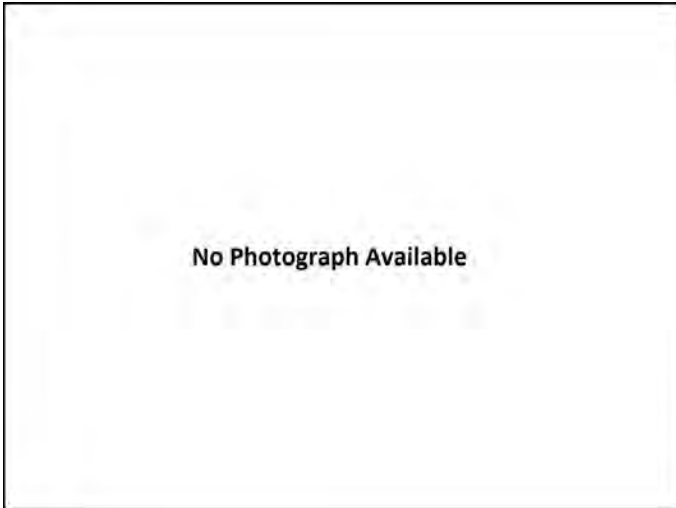
**Watercourse:** River - South Fork Stillaguamish River

**Resources at Risk:** Fish Hatchery

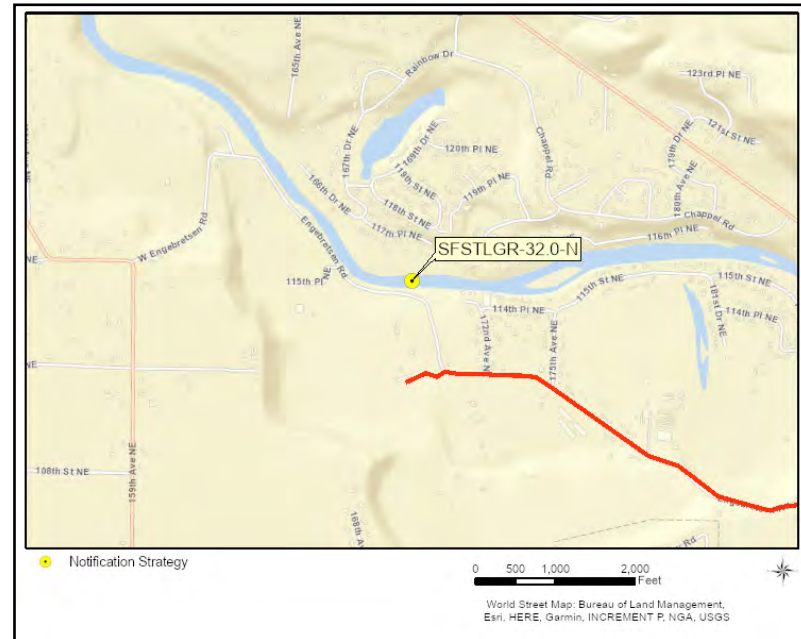


## Communication Process and Action:

Call the Stillaguamish Tribe Hatchery Manager at 360-399-9899 and explain the situation regarding the spill. Advise they consider delaying fish releases until the situation is resolved. If you are unable to reach the hatchery manager, contact the Stillaguamish Hatchery Duty Phone (monitored 24/7) at 360-631-8042. You can also reach the Stillaguamish Tribe through the Stillaguamish Police Department emergency number, 425-508-2765.



SFSTLGR-32.0-N Photo: Photo Not Available



## Site Contact

### Stillaguamish Tribe

Primary Contact : Hatchery Manager  
360-399-9899

### Stillaguamish Hatchery Duty Phone

Emergency Contact : Monitored 24/7  
360-631-8042

## Nearest Address

17100 Engebretsen Rd  
Granite Falls, WA 98252

## Driving Directions

### DIRECTIONS TO HATCHERY

1. From I-5 N from Everett take exit 194 on the right to merge onto US-2 E toward Snohomish / Wenatchee
2. Take the exit on the left to WA-204 E / 20th SE toward Lake Stevens (0.23 miles)
3. Keep left at the fork to WA-204 E toward Lake Stevens (0.35 miles)
4. Bear right on State Route 204 (WA-204) (1.8 miles)
5. At the roundabout, take the third exit onto State Highway 9 NE (WA-9)
8. At the next roundabout, continue through onto State Highway 9 NE (WA-9)
10. At the traffic light, turn right on Granite Falls Hwy (WA-92) (0.56 miles)
11. At the roundabout, take the second exit onto WA-92 (State Route 92) (0.29 miles)
12. Keep right at the fork onto WA-92 (State Route 92) (0.61 miles)
13. Continue through two roundabouts, exiting onto WA-92.
15. At the roundabout, take the second exit onto WA-92 (Quarry Rd) (0.7 miles)
16. At the roundabout, take the fourth exit onto Engebretsen Rd (1.25 miles)
17. Bear left (0.11 miles)
19. Finish at 17100 Engebretsen Rd, 98252, on the right

# Stillaguamish Tribe

STLGR-12.0-N

**Position - Location:** 48° 12.308', -122° 15.814' 48° 12' 18.5", -122° 15' 48.8" 48.20513, -122.26356 Arlington

**Strategy Objective:** Notification : Notify the Stillaguamish Tribe of any spill that may impact the Stillaguamish watershed.

**Implementation:** Call the Stillaguamish Tribe at 425-508-2765 (Police Department Emergency Number) so that they can deploy GRP strategies maintained by the Stillaguamish Tribe to protect Tribal Resources.

**Field Notes:** The Tribe's GRP strategies help ensure that immediate action is taken to reduce the impact of oil on culturally significant areas within the Tribe's traditional lands.

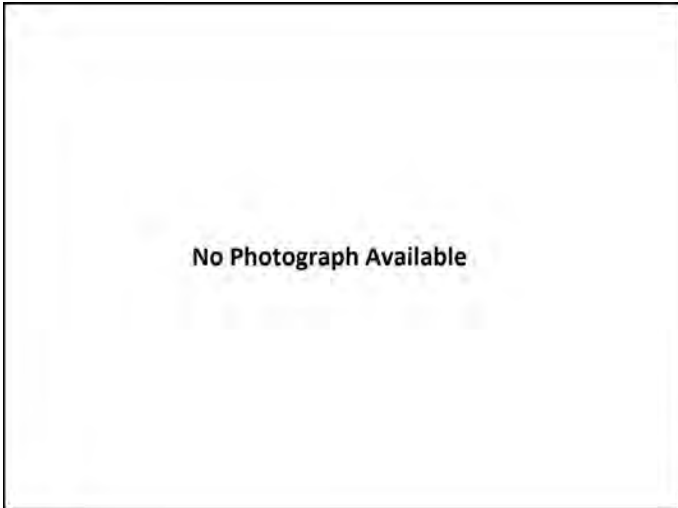
**Watercourse:** River - Stillaguamish River

**Resources at Risk:** Tribal Lands/Resources



## Communication Process and Action:

Notify the Stillaguamish Tribe of any spill that may impact the Stillaguamish watershed by calling the Stillaguamish Police Department emergency number, 425-508-2765. The Stillaguamish Tribe maintains their own GRP strategies and may decide to deploy equipment to protect Tribal resources.



STLGR-12.0-N Photo: Photo Not Available



**Site Contact**

**Stillaguamish Tribe Police Department**  
Tribal Contact : Emergency Contact  
  
Arlington, WA  
425-508-2765

**Nearest Address**

3322 236th St NE  
Arlington, WA 98223

**Driving Directions**

- DIRECTIONS TO TRIBAL HEADQUARTERS
1. Start at I-5 N Arlington
  2. Go northwest on I-5 N (0.81 miles)
  3. Take exit 210 on the right to 236th St. N.E. (0.25 miles)
  4. At the stop sign, turn right on 236th St NE (Jackson Gulch Rd) (0.44 miles)
  5. At the roundabout, take the second exit onto 236th St NE (Jackson Gulch Rd) (0.99 miles)
  6. Turn right (0.03 miles)
  7. Finish at 3322 236th St NE, 98223, on the right

# Harvey Creek Hatchery

STLGR-15.2-N

**Position - Location:** 48° 13.138', -122° 8.163' 48° 13' 8.3", -122° 8' 9.8" 48.21896, -122.13605 Arlington

**Strategy Objective:** Notification : Prevent fish from being released during a spill or protect salmon hatchery.

**Implementation:** Call the Stillaguamish Tribe Fish Hatchery Manager at 360-399-9899 and explain the situation regarding the spill.

**Field Notes:** Hatchery water intake is on Armstrong Creek.

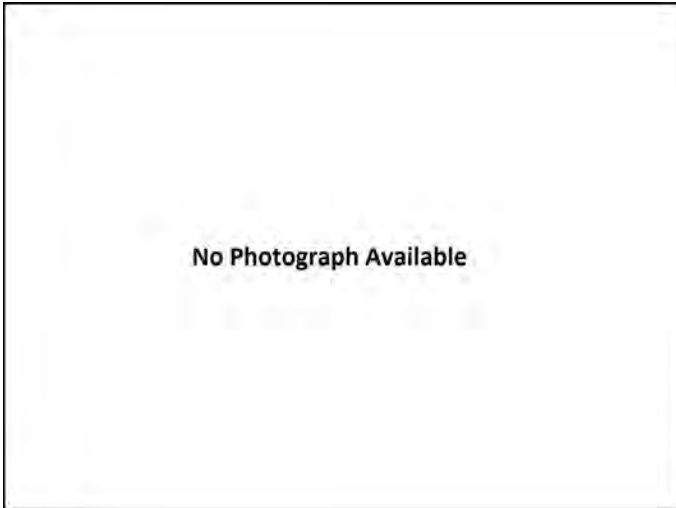
**Watercourse:** Creek - Armstrong Creek

**Resources at Risk:** Fish Hatchery

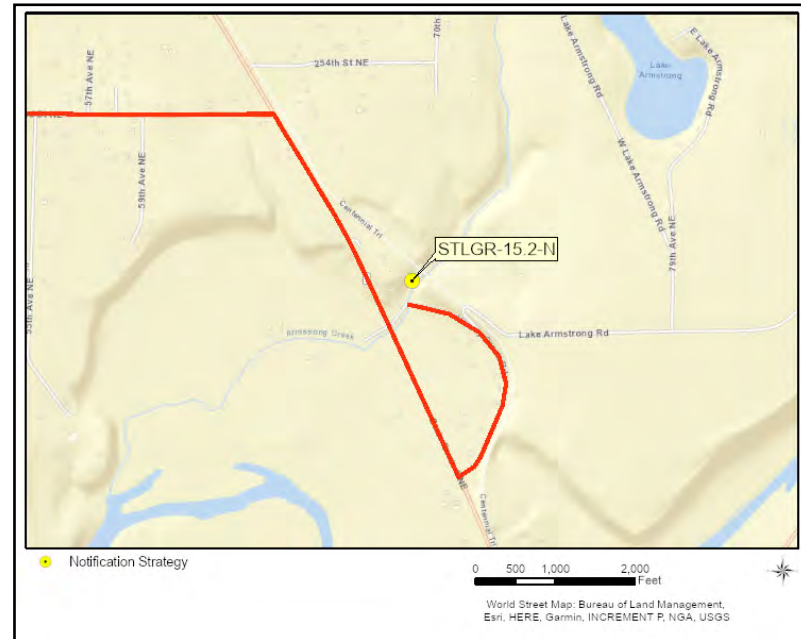


## Communication Process and Action:

Call the Stillaguamish Tribe Hatchery Manager at 360-399-9899 and explain the situation regarding the spill. Advise they consider delaying fish releases until the situation is resolved. If you are unable to reach the hatchery manager, contact the Stillaguamish Hatchery Duty Phone (monitored 24/7) at 360-631-8042. You can also reach the Stillaguamish Tribe through the Stillaguamish Police Department emergency number, 425-508-2765.



STLGR-15.2-N Photo: Photo Not Available



### Site Contact

#### Stillaguamish Tribe

Primary Contact : Hatchery Manager  
360-399-9899

#### Stillaguamish Hatchery Duty Phone

Emergency Contact : Monitored 24/7  
360-631-8042

### Nearest Address

24509 Harvey Creek Rd  
Arlington, WA 98223

### Driving Directions

#### DIRECTIONS TO HATCHERY

1. Start at I-5 N Arlington
2. Go northwest on I-5 N (1.57 miles)
3. Take exit 210 on the right to 236th St. N.E. (0.25 miles)
4. At the stop sign, turn right on 236th St NE (Jackson Gulch Rd) (0.44 miles)
5. At the roundabout, take the third exit onto 19th Ave NE (1.07 miles)
6. Bear right on 252nd St NE (2.83 miles)
7. At the stop sign, turn right on State Route 9 NE (WA-9) (0.97 miles)
8. Turn left on Harvey Creek Rd (0.59 miles)
9. Finish at 24509 Harvey Creek Rd, 98223, on the right

# Marysville Water Intake

STLGR-16.0-N

**Position - Location:** 48° 12.442', -122° 8.487'      48° 12' 26.5", -122° 8' 29.2"      48.20737, -122.14145      Marysville

**Strategy Objective:** Notification : Notify Marysville Public Works about the spill so they can take timely action to protect their resources.

**Implementation:** Call Marysville Public Works at 360-363-8100 (afterhours Utilities Emergency Number at 360-363-8350) about the spill so that they can take timely action to protect the resources under their control.

**Field Notes:** Water intake is a Ranney Collector

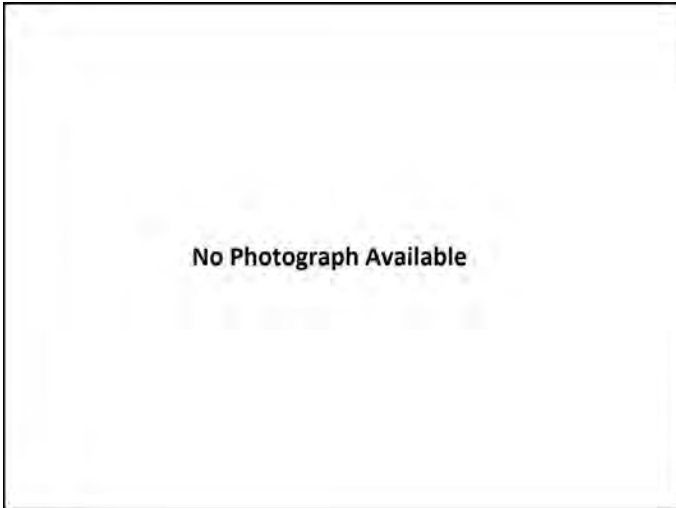
**Watercourse:** River - Stillaguamish River

**Resources at Risk:** Economic Resources, Public Health and Safety, Water Intakes



## Communication Process and Action:

Call Marysville Public Works at 360-363-8100 and ask to speak the supervisor or manager of the Water Division. Inform them of any significant oil spill or potential spill that impacts or threatens to impact the Stillaguamish River within the planning area. Ask them to take whatever actions they deem necessary and appropriate to protect the resources under their control. Actions might include the closure of their water intake pump. Afterhours call the Utilities Emergency Number at 360-363-8350.



STLGR-16.0-N Photo: No photograph currently available for this strategy location



### Site Contact

#### Marysville Public Works

Emergency Contact :  
360-363-8100

#### Marysville Utilities Emergency Number

After Hours and Weekends Contact :  
360-363-8350

### Nearest Address

80 Columbia Ave  
Marysville, WA 98270

### Driving Directions

1. Head south on I-5 from West Arlington
2. At exit 199 bear right onto ramp to WA-528 E toward Marysville / Tulalip (0.2 miles)
3. Turn left on 4th St (WA-528) (0.42 miles)
4. Turn right on State Ave (WA-529) (0.19 miles)
5. Turn left on 1st St (Front St) (0.08 miles)
6. Turn right on Columbia Ave (0.06 miles)
7. Finish at Marysville Utilities, 80 Columbia Ave, 98270, on the left

# City of Arlington Water Intakes

STLGR-18.0-N

**Position - Location:** 48° 12.217', -122° 7.700'      48° 12' 13.0", -122° 7' 42.0"      48.20362, -122.12833      Arlington

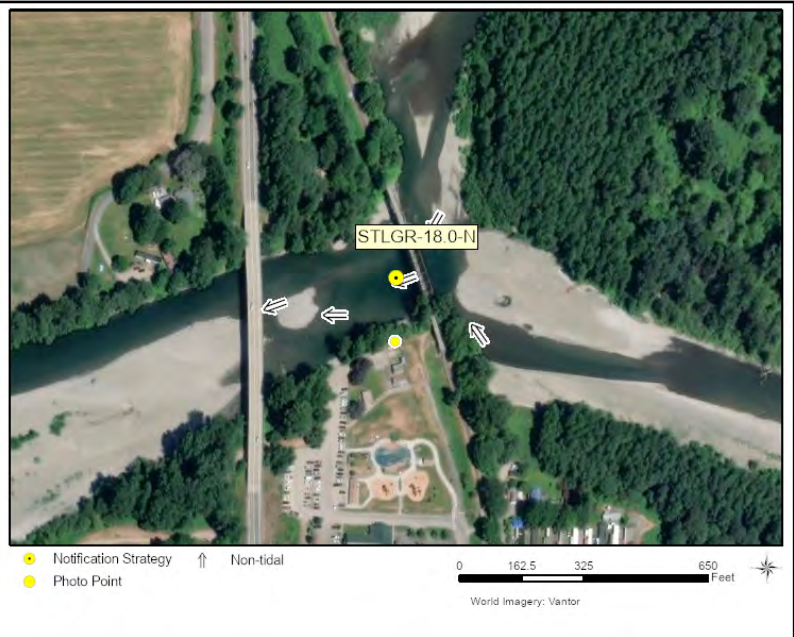
**Strategy Objective:** Notification : Notify City of Arlington Water Utilities about spill so they can take timely action to protect their resources

**Implementation:** Notify the City of Arlington Water Utilities by calling the water emergency on-call phone at 360-913-0323 (24/7) and the stormwater spill message number at 360-403-4600 to inform them of any spill that may impact Arlington's drinking water intakes.

**Field Notes:** Intake pumps draw surface water through the riverbank into a wellfield.

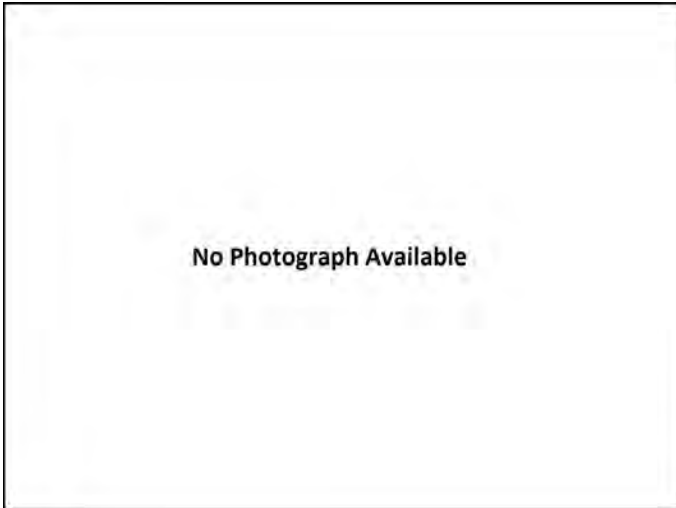
**Watercourse:** River - Stillaguamish River

**Resources at Risk:** Economic Resources, Public Health and Safety, Water Intakes



## Communication Process and Action:

Call City of Arlington Water Utilities by calling the water emergency on-call phone at 360-913-0323 (24/7) and the stormwater spill message number at 360-403-4600 to inform them of any significant oil spill or potential spill that impacts or threatens to impact the mainstem Stillaguamish River and the North and South Forks. The City of Arlington Water Utilities will determine and take whatever actions they deem necessary and appropriate to protect the resources under their control, including the protection of water intakes in the area.



STLGR-18.0-N Photo: No photograph currently available for this strategy location.



## Site Contact

### City of Arlington Water Emergency

Emergency Contact : On-Call Phone (24/7)  
360-913-0323

### City of Arlington Stormwater Spill Reporting

Emergency Contact : Message number  
360-403-4600

## Nearest Address

1100 N. West Ave.  
Arlington, WA 98223

## Driving Directions

1. Head north on I-5 from Marysville, wa
2. At exit 202 bear right onto ramp to 116th St. N.E. (0.23 miles)
3. Turn left on 116th St NE (0.13 miles)
4. Turn left onto ramp and go on I-5 N toward Vancouver B.C. (5.96 miles)
5. At exit 208 take ramp on the right to WA-530 toward Arlington / Darrington (0.24 miles)
6. Turn right on WA-530 NE (State Route 530 NE) (2.64 miles)
7. At fork keep left on WA-530 NE (State Route 530 NE) (1.11 miles)
8. Turn left at Hazel St / W Division St to stay on WA-530 NE (WA-9) (0.11 miles)
9. Turn right at WA-9 / W Burke Ave to stay on WA-530 NE (W Burke Ave) (0.12 miles)
10. Turn left on West Ave (0.12 miles)
11. Turn left on W Cox Ave (0.04 miles)
12. Finish at City of Arlington Public Works, 154 W Cox Ave, 98223, on the left

**This page was intentionally left blank**

**APPENDIX C**  
**Staging Area 2-Pagers**

# Stillaguamish River at Haller Park

SA-STLGR-17.7

## Staging Area

**Position - Location:** 48° 12.177', -122° 7.732'      48° 12' 10.6", -122° 7' 43.9"      48.20295, -122.12886      Arlington

**Comments:** Popular city park with restrooms and playground. Paved and gravel parking with river access. Boat launch not suitable for trailered boats. There is a dropoff at end of ramp. Contact City Parks and Recreation at 360-403-3448 and/or Public Works at 360-403-3526.



## GRP Response Strategies Served:

STLGR-17.7b, STLGR-17.7a

## Location Information

Asset	Type/Status	Amount/Number
Boat Dock(s)	No	
Boat Ramp(s)	Concrete, Plank	1 drop off in low water at end of ramp
Cell Phone Coverage	Yes	2 bars of LTE
Covered Spaces	Yes	1 Gazebo
Estimated Lot Size	Other	17,500 sq feet, 20 lined spaces
Fuel	No	
Lot Cover (Primary)	Dirt/Gravel	dirt/gravel to launch, paved lined too
Parking - Car	Marked	20 asphalt
Parking - Trailer	Not Marked	20 dirt/gravel
Power	Yes	Power in Gazebo and bathrooms
Restroom	Restroom - Flush	2 mens and womens
User Fee	No	
Waste Disposal	Trash Receptacle	
Water (potable)	Yes	water at bathrooms



SA-STLGR-17.7 Photo: Haller Park boat launch ramp in Arlington on the Stillaguamish River. Ramp has a steep drop off and is not suitable for trailered boats.



### Site Contact

**City of Arlington**  
Land/Property Contact : Parks & Recreation  
360-403-3448

**City of Arlington Public Works**  
Land/Property Contact :  
360-403-3526

### Nearest Address

1100 West Ave  
Arlington, WA 98223

### Driving Directions

#### DIRECTIONS TO STAGING AREA/BOAT LAUNCH

1. From I-5 exit 208 on the right to WA-530 E toward Arlington / Darrington
2. At the traffic light, turn east on State Route 530 NE (WA-530) (3.78 miles)
3. At the traffic light, turn left on State Route 9 NE (0.08 miles)
4. Take the exit on the right to merge onto W Burke Ave (WA-530) (0.14 miles)
5. Turn left on N West Ave (0.11 miles)
6. Turn left on W Cox Ave (0.03 miles)
7. Finish at 1100 N. West Ave, 98223, on the right

**This page was intentionally left blank**

**APPENDIX D**  
**Boat Launch 2-Pagers**

# Stillaguamish River at Haller Park

BL-STLGR-17.7

## Boat Launch Location

**Position - Location:** 48° 12.177', -122° 7.732'      48° 12' 10.6", -122° 7' 43.9"      48.20295, -122.12886      Arlington

**Comments:** Ramp suitable for hand-launch vessels only. Steep drop off at end of ramp.



## GRP Response Strategies Served:

STLGR-17.7b, STLGR-17.7a

## Location Information

Asset	Type/Status	Amount/Number
Boat Dock(s)	No	
Boat Ramp(s)	Concrete, Plank	1 drop off in low water at end of ramp
Cell Phone Coverage	Yes	2 bars of LTE
Covered Spaces	Yes	1 Gazebo
Estimated Lot Size	Other	17,500 sq feet, 20 lined spaces
Fuel	No	
Lot Cover (Primary)	Dirt/Gravel	dirt/gravel to launch, paved lined too
Parking - Car	Marked	20 asphalt
Parking - Trailer	Not Marked	20 dirt/gravel
Power	Yes	Power in Gazebo and bathrooms
Restroom	Restroom - Flush	2 mens and womens
User Fee	No	
Waste Disposal	Trash Receptacle	
Water (potable)	Yes	water at bathrooms

# Stillaguamish River at Haller Park

BL-STLGR-17.7



SA-STLGR-17.7 Photo: Haller Park boat launch ramp in Arlington on the Stillaguamish River. Ramp has a steep drop off and is not suitable for trailered boats.

### Site Contact

**City of Arlington**  
Land/Property Contact : Parks & Recreation  
360-403-3448

**City of Arlington Public Works**  
Land/Property Contact :  
360-403-3526

### Nearest Address

1100 West Ave  
Arlington, WA 98223



### Driving Directions

- DIRECTIONS TO STAGING AREA/BOAT LAUNCH
1. From I-5 exit 208 on the right to WA-530 E toward Arlington / Darrington
  2. At the traffic light, turn east on State Route 530 NE (WA-530) (3.78 miles)
  3. At the traffic light, turn left on State Route 9 NE (0.08 miles)
  4. Take the exit on the right to merge onto W Burke Ave (WA-530) (0.14 miles)
  5. Turn left on N West Ave (0.11 miles)
  6. Turn left on W Cox Ave (0.03 miles)
  7. Finish at 1100 N. West Ave, 98223, on the right