

# **UPPER COLUMBIA RIVER**

## **Geographic Response Plan**

**(UCR-GRP)**

### **CHAPTER 4**

#### **Response Strategies and Priorities**

**June 2017**

## **Before you print this document**

This chapter and its appendices, as well as the appendix at the end of Chapter 6, are provided in “landscape” page orientation. The detailed 2-page information sheets for response strategies, notification strategies, staging areas, and boat launch locations in appendices 4A through 4D (pages [65-122](#)) have been designed for duplex printing (front and back side of paper), “open to top” configuration.

## 4.1 CHAPTER INTRODUCTION

This chapter provides information on GRP response strategies and the order they should be implemented, based on Potential Oil Spill Origin Points (POSOPs) and the proximity and relative priority of sensitive resources near those point locations. Area maps, sector maps, and information on staging areas and boat launch locations are also provided in this chapter. During a spill incident, GRP response strategies should be implemented as soon as possible. Unless circumstances unique to a particular spill situation dictate otherwise, the priority tables in Section 4.3 should be used to decide the order that GRP strategies are deployed. The downstream movement of oil and the time it takes to mobilize response resources to deploy GRP strategies must always be considered when setting implementation priorities. Information on resources at risk, sensitive areas, and flight restrictions can be found in Chapter 6 of this plan. Information on shoreline countermeasures can be found in the Northwest Area Shoreline Countermeasures Manual ([NWACP Section 9420](#)). The Northwest Area Contingency Plan (NWACP) is available online at <http://www.rtt10nwac.com/NWACP/Default.aspx>.

The GRP strategies provided in this chapter have been created to reduce spilled oil's impact on sensitive resources. They are not everything that should or could be done during a response to lessen the chance of injury to natural, cultural, and economic resources at risk from oil spills. Control and containment of an oil spill is always a higher priority than the implementation of GRP response strategies. Although designed to be implemented during the initial phase of an oil spill, GRP strategies may continue to be used throughout a response at the discretion of the Incident Commander, Unified Command, or the Environmental Unit.

### 4.1.1 On-site Considerations

#### ***Before Deploying a GRP Strategy (Questions to Ask)***

- Are conditions safe? Response managers and responders must first determine if efforts to implement a response strategy would pose an undue risk to worker safety or the public, based on conditions present during the time of the emergency. No strategy should be implemented if doing so would threaten public safety or present an unreasonable risk to the safety of responders.
- Has initial control and containment been sufficiently achieved? Control and containment of the spill at or near the source are always higher priorities than the deployment of GRP response strategies, especially when concurrent response activities are not possible.
- How far downstream or out into the river environment is the spilled oil likely to travel before response personnel will be ready and able to deploy GRP response strategies?

- Are permits required? Consult the [Northwest Area Contingency Plan](#) Permit Summary Table ([NWACP Section 9401](#)) for information specific to your location and circumstance.
- Will equipment or vehicles need to be staged on or near a roadway? If so, traffic control may be required. Contact the Washington State Patrol, or local, county, municipality, or tribal police for assistance. At minimum, [Washington Department of Transportation \(WSDOT\) guidelines for work zone traffic control](#) should be followed when working on or near a roadway.
  - Chelan County Sheriff (509) 667-6851
  - Douglas County Sheriff (509) 884-0941
  - Grant County Sheriff (509) 754-2011
  - Kittitas County Sheriff (509) 962-7525
  - Washington State Patrol - District 6 (509) 682-8090

### ***During Strategy Implementation (Things to Remember)***

- On-scene conditions (weather, currents, tides, waves, river speed, and debris) may require that strategies be modified in order to be effective. There is a significant chance that weather and conditions experienced at a particular strategy location during an actual spill event will be different from that when data was gathered during field visits. Response managers and responders must remain flexible and modify the strategies provided in this chapter as needed to meet the challenges experienced during an actual response.
- Certain strategies may call for access points or staging areas that are not easily reached at all times of the year or in all conditions.
- The GRP response strategies provided in this chapter were designed for use with persistent heavy oils that float on water and may not be suitable for other petroleum products or hazardous substances. For information about non-floating oil spill response, refer to the *Non-Floating Oil Spill Response Tool* in the [Northwest Area Contingency Plan](#) (NWACP), Section 9412.

### ***After Strategy Implementation (Things to Understand)***

- Oil containment boom should be maintained and periodically monitored to ensure its effectiveness. Changes in river or current speed will likely require modifications to boom deflection angles (see Table 4-1). Depending on conditions, some booming strategies may require around-the-clock tending.

### ***Water Speed and Boom Deflection Angle***

Measure the speed that water is moving by anchoring a line with two floating markers/buoys attached that are spaced 100 feet apart. Time the movement of floating debris between the two buoys, and then use Table 4-1 to estimate the water speed based on the travel time of the debris between the two buoys. You can also measure 100 feet along a straight portion of river bank or shoreline, and time the movement of debris between those points, but this method is generally less accurate than using the buoys. The maximum boom deflection angle is also provided in the table, based on the water speed measurements.

**Table 4-1: Water Speed Drift Measurement Table**

<b>Time to Drift 100 Feet (seconds)</b>	<b>Velocity (ft/sec)</b>	<b>Velocity (m/sec)</b>	<b>Velocity (knots)</b>	<b>Max Boom Deflection Angle (degrees)</b>	<b>Boom required for 100-foot Profile to Current (feet)</b>	<b>Anchors needed if Placed Every 50 feet (number)</b>
6	16.7	5.1	10.00	4.0	1,429	30
8	12.5	3.8	7.50	5.4	1,071	22
10	10.0	3.1	6.00	6.7	857	18
12	8.3	2.5	5.00	8.0	714	15
14	7.1	2.2	4.29	9.4	612	13
17	5.9	1.8	3.53	11.4	504	11
20	5.0	1.5	3.00	13.5	429	10
24	4.2	1.3	2.50	16.3	357	8
30	3.3	1.0	2.00	20.5	286	7
40	2.5	0.8	1.50	27.8	214	5
60	1.7	0.5	1.00	44.4	143	4
>86	≤1.2	≤0.35	≤0.70	90.0	100	3

*Source: Oil Spill Response in Fast Currents. A Field Guide. U.S. Coast Guard Research and Development Center. October, 2001*

#### 4.1.2 Historical River Flow Ranges

Streamflow data from U.S. Geological Survey (USGS) was used to determine the mean monthly discharge for rivers and streams in the planning area. Stream discharge is recorded in cubic feet per second (cfs); velocities in miles per hour (mph) or nautical miles per hour (knots) are not available. Table 4-1 provides information that can be used to calculate local river velocities on-site, based on the time it takes a floating object to drift 100 feet downstream from any given point in a river or creek. Additional information for USGS gage stations in the planning area are provided below (hyperlinked column headers), and may include real-time or near real-time streamflow data. The USGS National Water System Mapper is useful for locating gage stations of interest, and is available online at <http://maps.waterdata.usgs.gov/mapper/index.html>.

**Table 4-2: Historical Streamflow for the Columbia River**

<i>Monthly average flow in Cubic Feet per Second (cfs)</i>		
	<b>Columbia River at Rocky Reach Dam</b> <b>USGS 12453700</b> (data from 2005 to 2015)	<b>Columbia River below Rock Island Dam</b> <b>USGS 12462600</b> (data from 1961 to 2016)
<b>Jan</b>	107,000	108,000
<b>Feb</b>	96,900	107,000
<b>Mar</b>	98,100	106,000
<b>Apr</b>	123,000	118,000
<b>May</b>	156,000	159,000
<b>Jun</b>	177,000	195,000
<b>Jul</b>	148,000	151,000
<b>Aug</b>	108,000	109,000
<b>Sep</b>	65,200	76,800
<b>Oct</b>	68,000	77,300
<b>Nov</b>	85,300	88,800
<b>Dec</b>	97,000	101,000

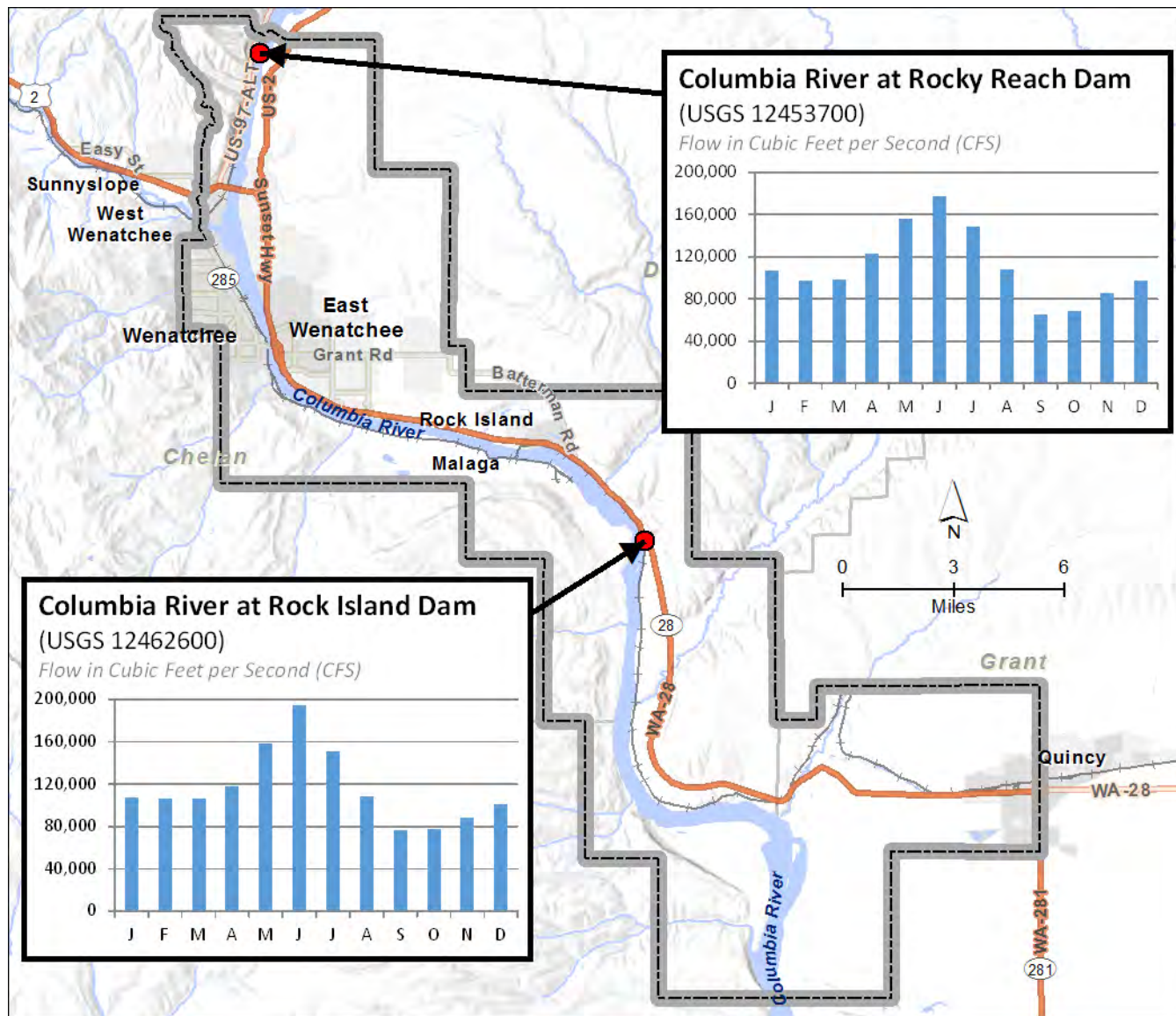


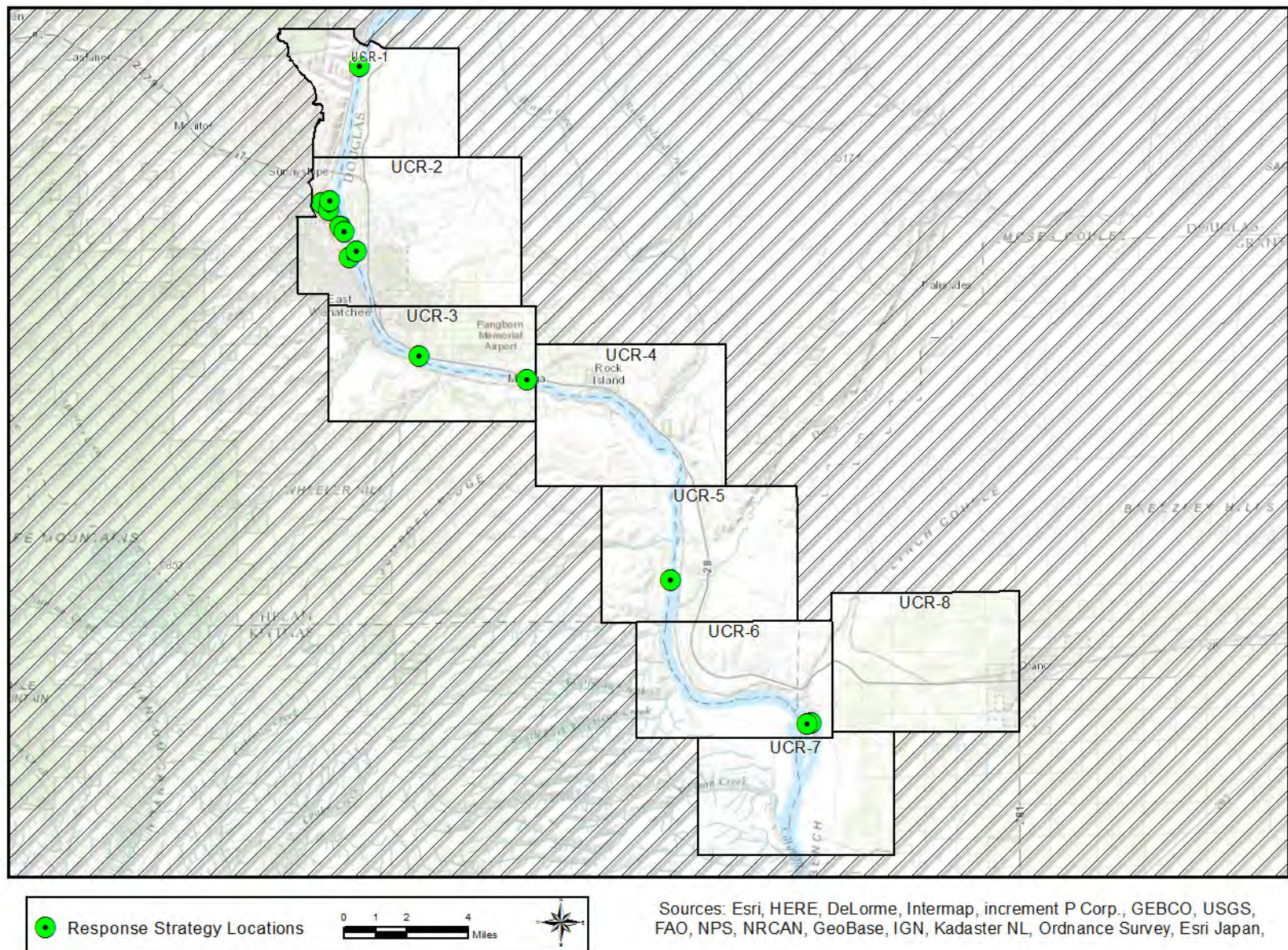
Figure 4-1: Mean Monthly Discharge Measurements for the Columbia River

## 4.2 AREA OVERVIEW MAPS

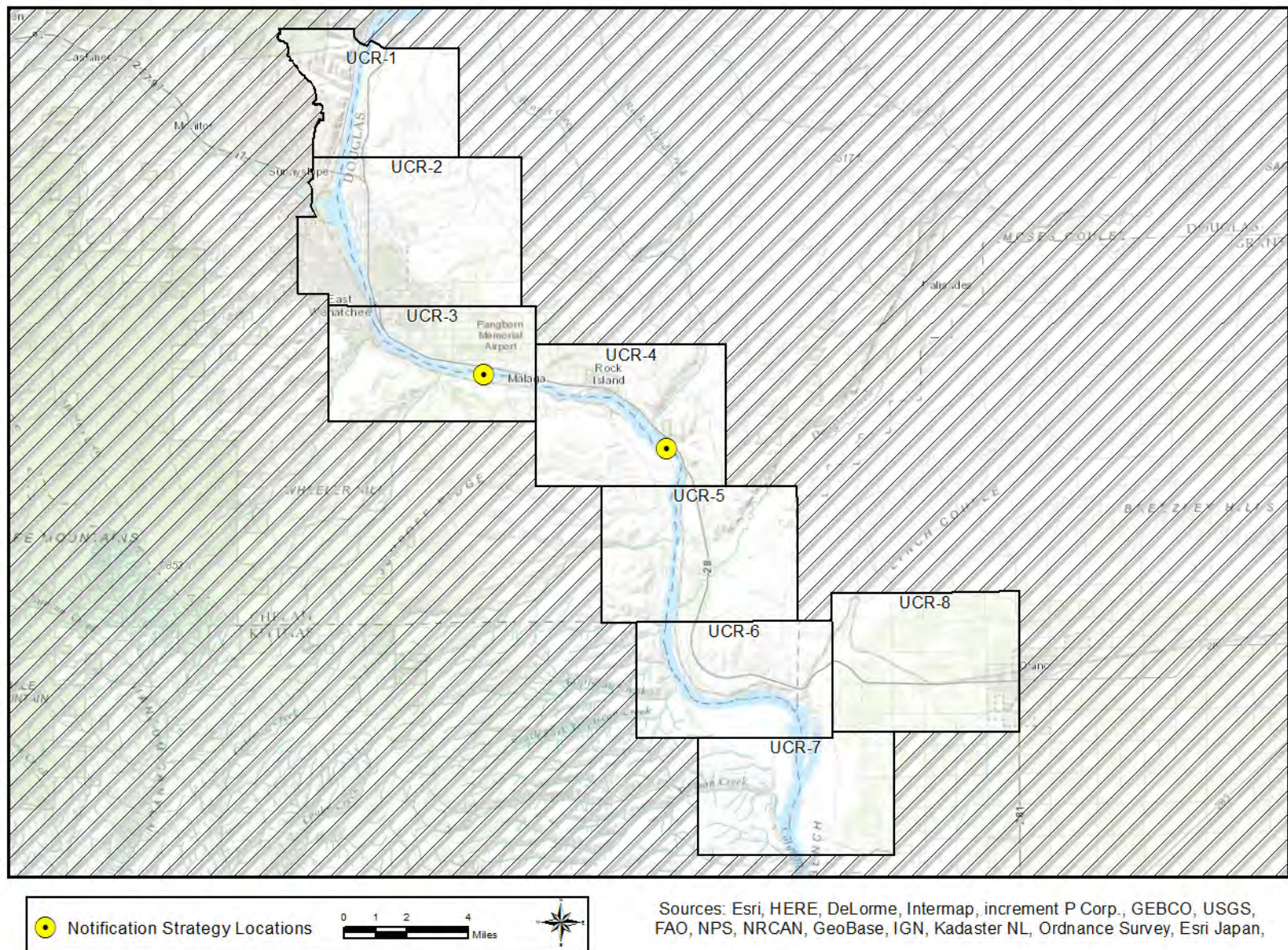
The following maps provide a geographic overview of the Upper Columbia River. Sector maps in Section 4.4 of this chapter provide more detail on the location of response strategies, notification strategies, staging areas, boat launch locations, and Potential Oil Spill Origin Points (POSOPs). Detailed information for each location can be found in the matrices of Section 4.5 or in the chapter appendices. Priority tables for potential oil spill origin points can be found in Section 4.3.2.

The following area maps are provided for reference:

- [Response Strategy Locations](#)
- [Notification Strategy Locations](#)
- [Staging Area Locations](#)
- [Boat Launch Locations](#)
- [Potential Oil Spill Origin Point Locations](#)

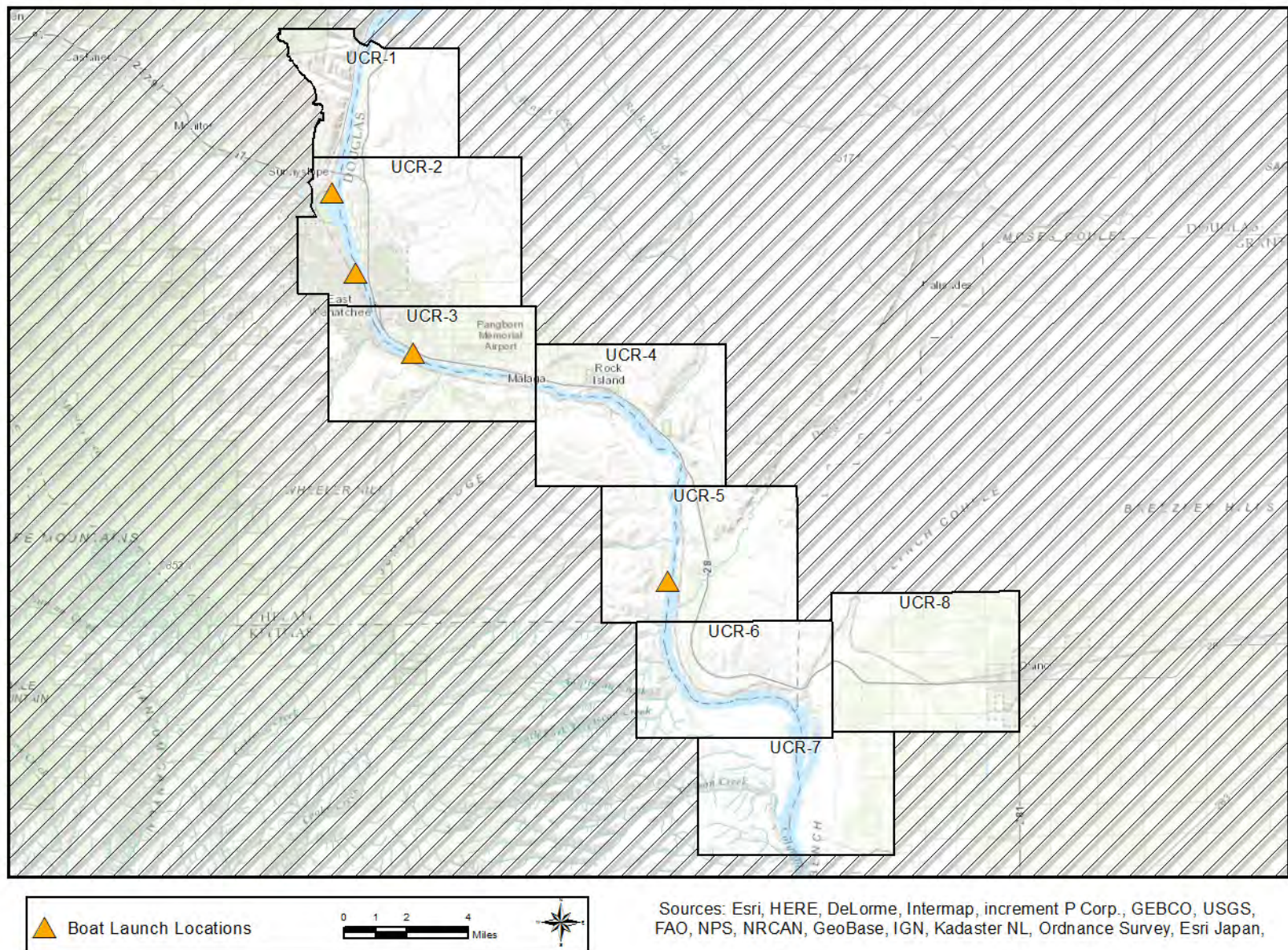


**Figure 4-2: Response Strategy Locations**

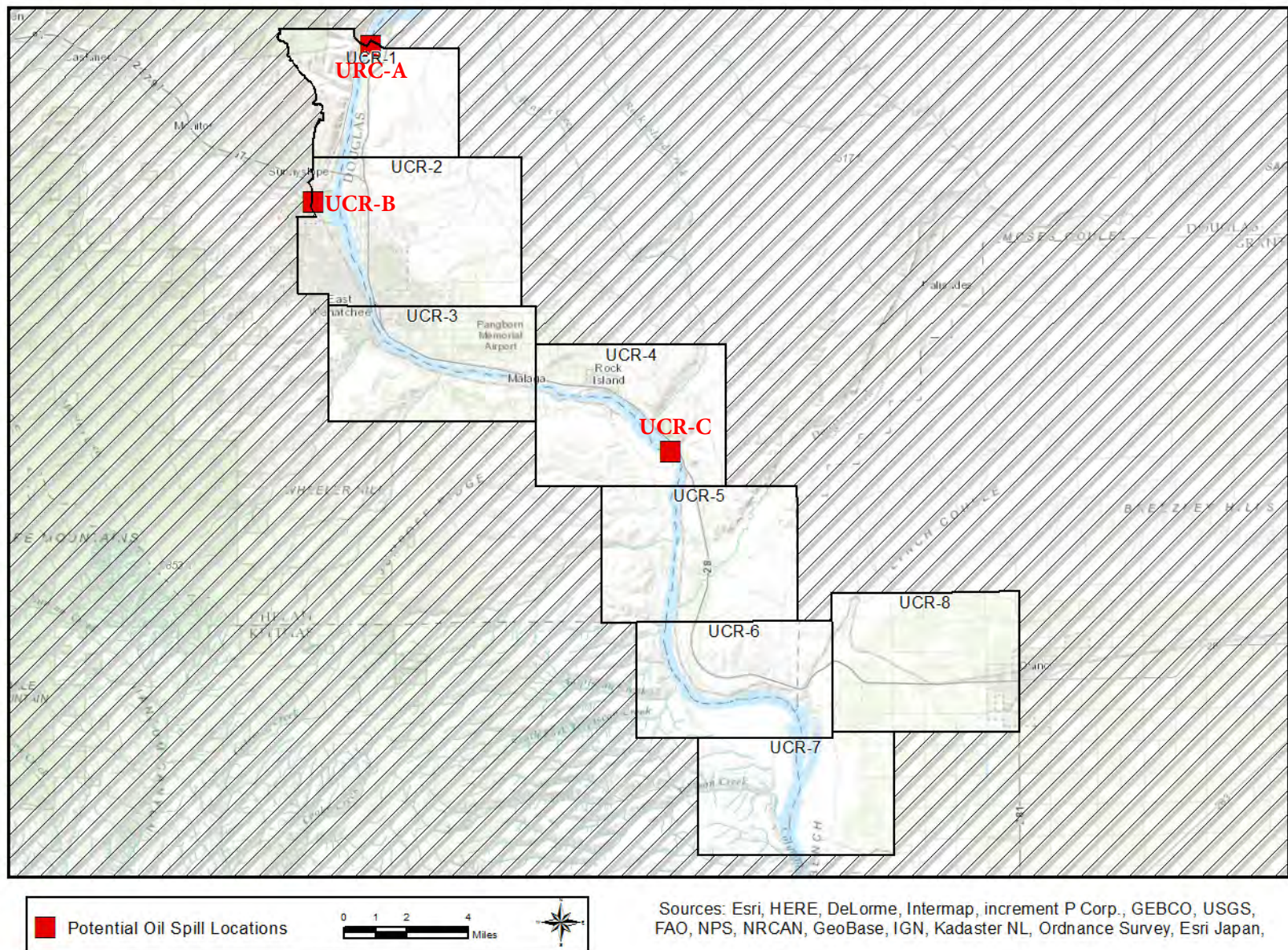


**Figure 4-3: Notification Strategy Locations**





**Figure 4-5: Boat Launch Locations**



**Figure 4-6: Potential Oil Spill Origin Point Locations**

## 4.3 STRATEGY AND RESPONSE PRIORITIES

### 4.3.1 General Response Priorities

The following list provides the order of response priorities after an oil spill in the planning area occurs.

- Safety is always the number one priority. Do not implement GRP strategies or take actions that will unduly jeopardize public, worker, or personal safety.
- Notify local public health and safety personnel.
- Control and contain the source of the spill; mobilize resources to the spill location. Source control and containment are always a higher priority than the implementation of GRP strategies.
- Determine the priority or order GRP strategies should be implemented based on the location of the spill or affected area. Priorities based on POSOPs are included in this chapter and should be used unless the situation or circumstances dictate otherwise (see Section 4.3.2).
- As response resources become available, implement the GRP Strategies in order of priority or as necessary based on the scenario, trajectory, or conditions of the day.
- Permits may be required. Consult the Northwest Area Contingency Plan Permit Summary Table ([NWACP Section 9401](#)) for information.

### 4.3.2 Strategy Priorities based on Potential Oil Spill Origin Points

Potential Oil Spill Origin Points (POSOPs) are geographic locations that have a defined list of response strategy implementation priorities provided in a table within Section 4.3. The placement of each POSOP is often based on spill risks in the area. Occasionally POSOPs are generalized to ensure implementation priorities are developed throughout an entire planning area.

These points are displayed on area overview and sector maps as red boxes. In establishing priorities during a response, or selecting an appropriate POSOP, the downstream and/or tidal movement of spilled oil and the time it takes to mobilize and deploy response resources must be considered. Generally, on streams, creeks, and rivers, GRP strategies should first be implemented downstream, well beyond the furthest extent of the spill, with deployments continuing upstream towards the spill source and in some cases slightly beyond. POSOPs are alphabetically designated.

The following tables provide the strategy implementation order for Potential Oil Spill Origin Points in the Upper Columbia River GRP; points UCR-A, UCR-B, and UCR-C. The priority tables provided in this section were developed using a combination of variables, including: notification time, travel time for responders and equipment, average and seasonal flow rates, average winds, deployment time, proximity to the spill source, trustee input, the relative priority of the resources at risk, and other considerations.

***Source control and containment are a higher priority than GRP strategy implementation***

**Table 4-3: UCR-A (Rocky Reach Dam)**

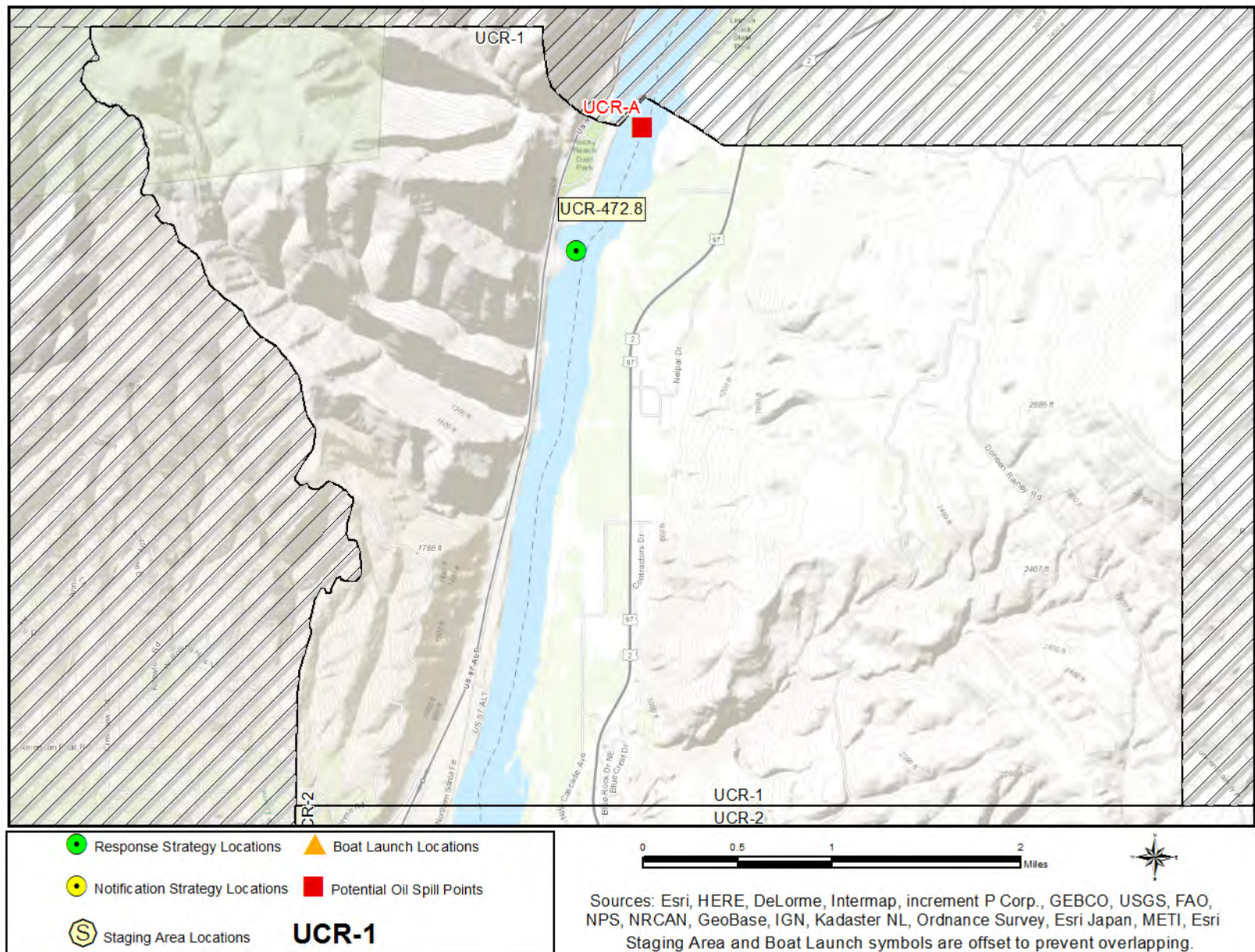
UCR-A (Rocky Reach Dam)				
Implementation Priority	Strategy Number	Sector Map	Strategy Matrix	Strategy Details
1	UCR-472.7	45	58	91
2	UCR-468.6	46	57	89
3	UCR-468.3	46	57	87
4	UCR-467.8a	46	56	83
5	UCR-467.8b	46	57	85
6	UCR-467.6	46	56	81
7	UCR-466.9	46	56	79
8	UCR-466.8	46	55	77
9	UCR-462.7	47	55	75
10	UCR-458.9	47	55	73

**Table 4-4: UCR-B (Wenatchee River)**

UCR-B (Wenatchee River)				
Implementation Priority	Strategy Number	Sector Map	Strategy Matrix	Strategy Details
1	WENA-0.8	46	58	95
2	WENA-0.7	46	58	93
3	UCR-468.3	46	57	87
4	UCR-467.8a	46	56	83
5	UCR-467.8b	46	57	85
6	UCR-467.6	46	56	81
7	UCR-466.9	46	56	79
8	UCR-466.8	46	55	77
9	UCR-462.7	47	55	75
10	UCR-458.9	47	55	73

**Table 4-5: UCR-C (Rock Island Dam)**

UCR-C (Rock Island Dam)				
Implementation Priority	Strategy Number	Sector Map	Strategy Matrix	Strategy Details
1	UCR-448.8	49	54	71
2	UCR-440.8a	50	54	67
3	UCR-440.8b	50	54	69



**Figure 4-7: Sector Map UCR-1**

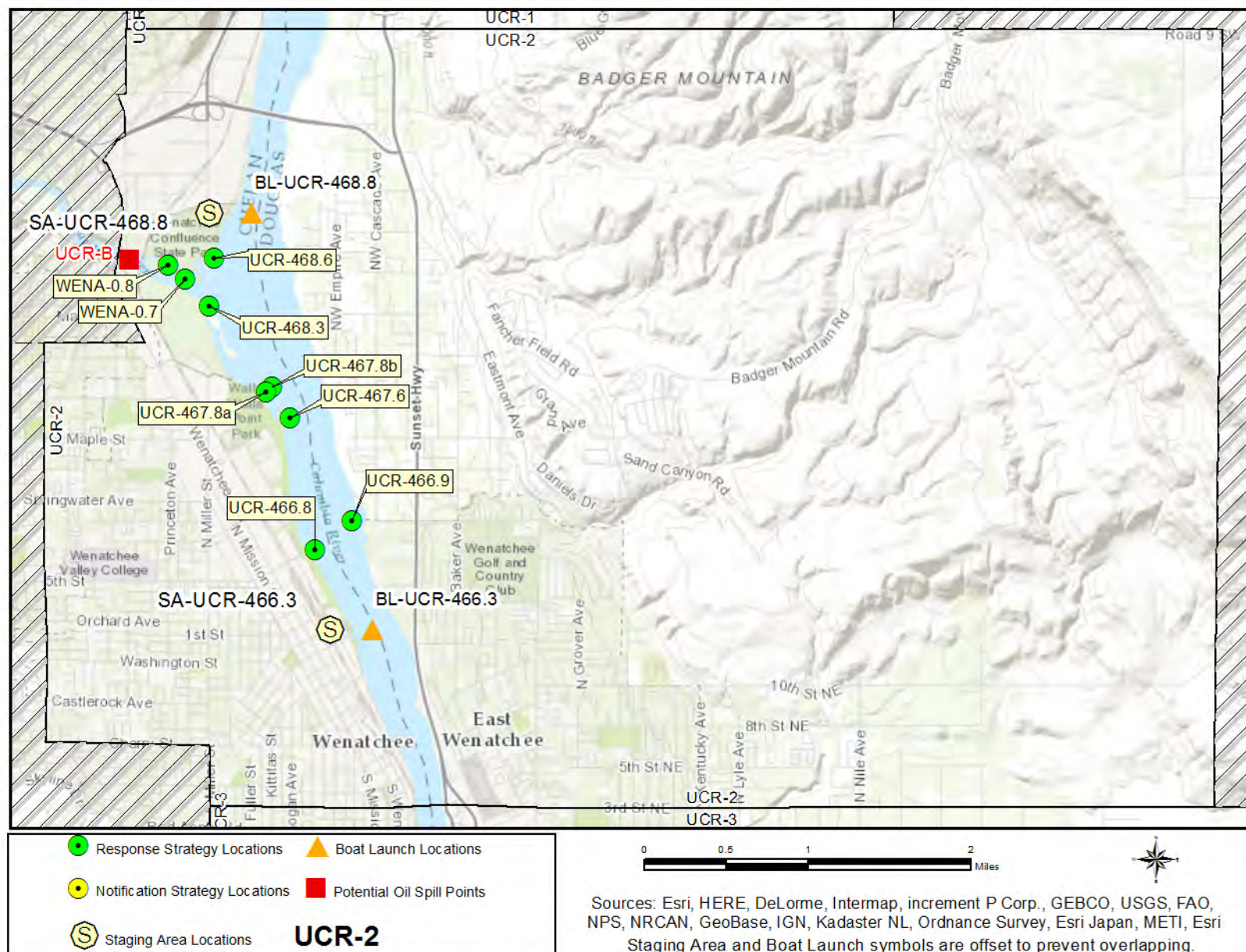


Figure 4-8: Sector Map UCR-2

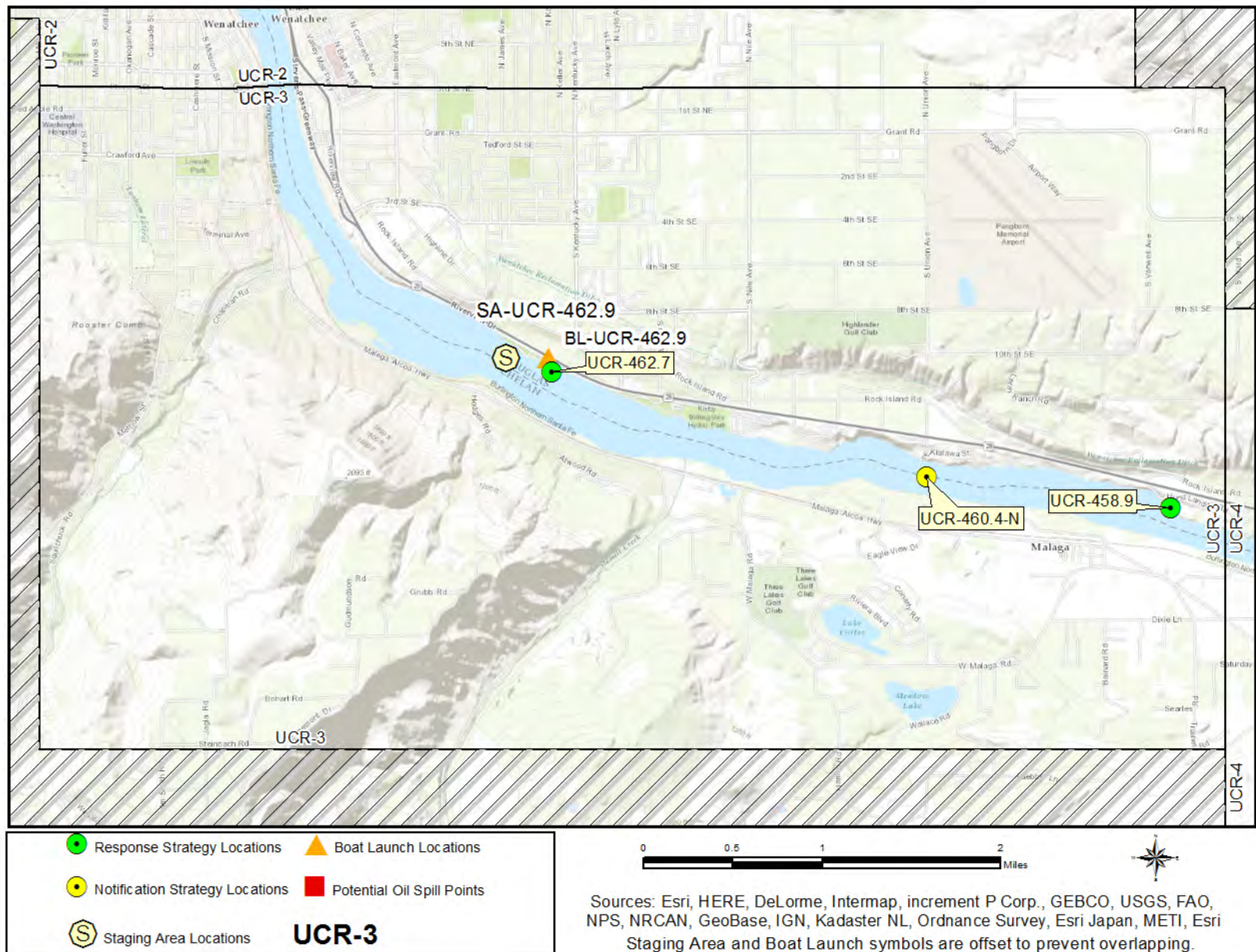
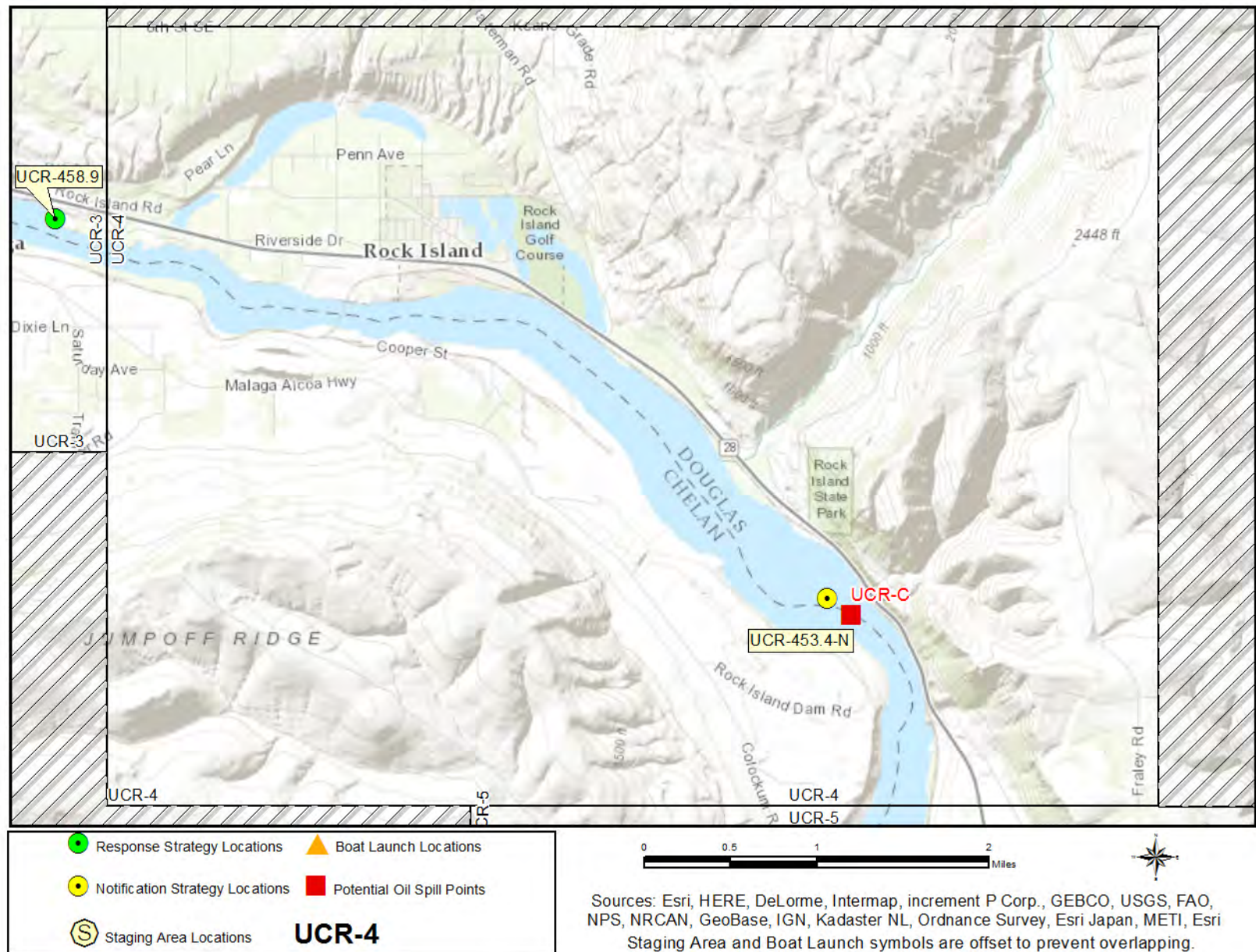
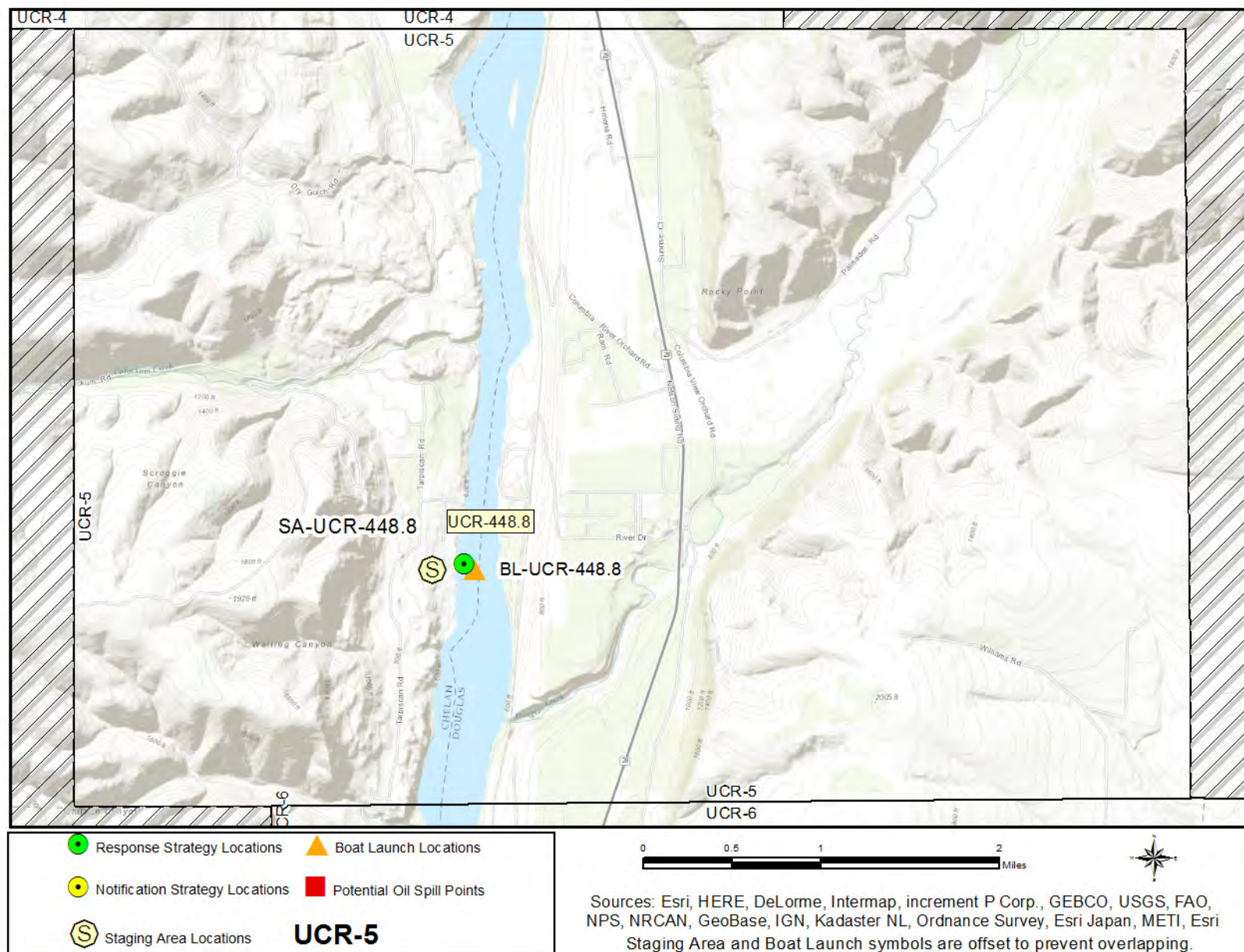


Figure 4-9: Sector Map UCR-3



**Figure 4-10: Sector Map UCR-4**



**Figure 4-11: Sector Map UCR-5**

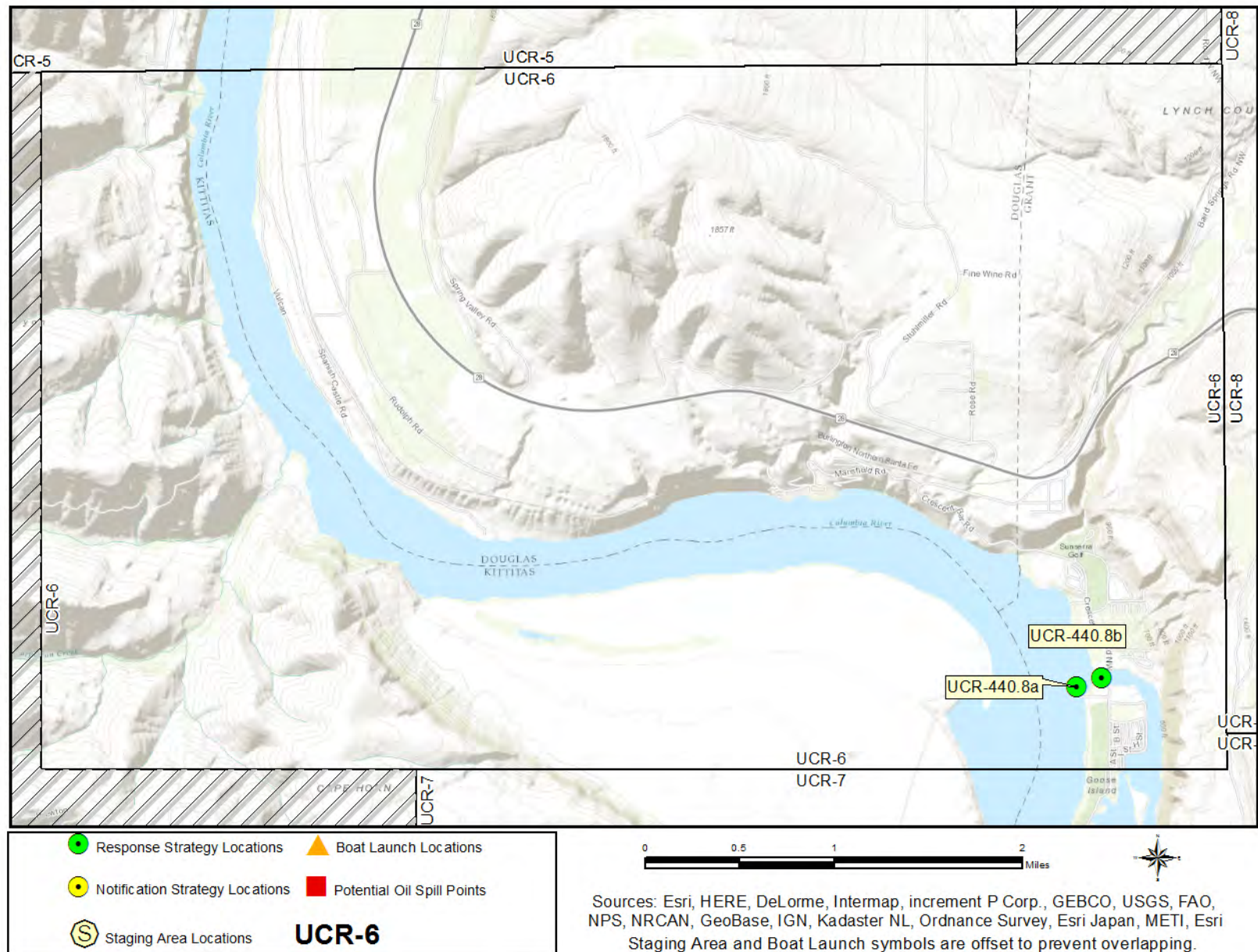
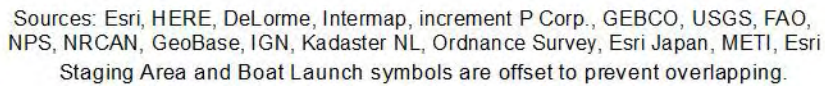
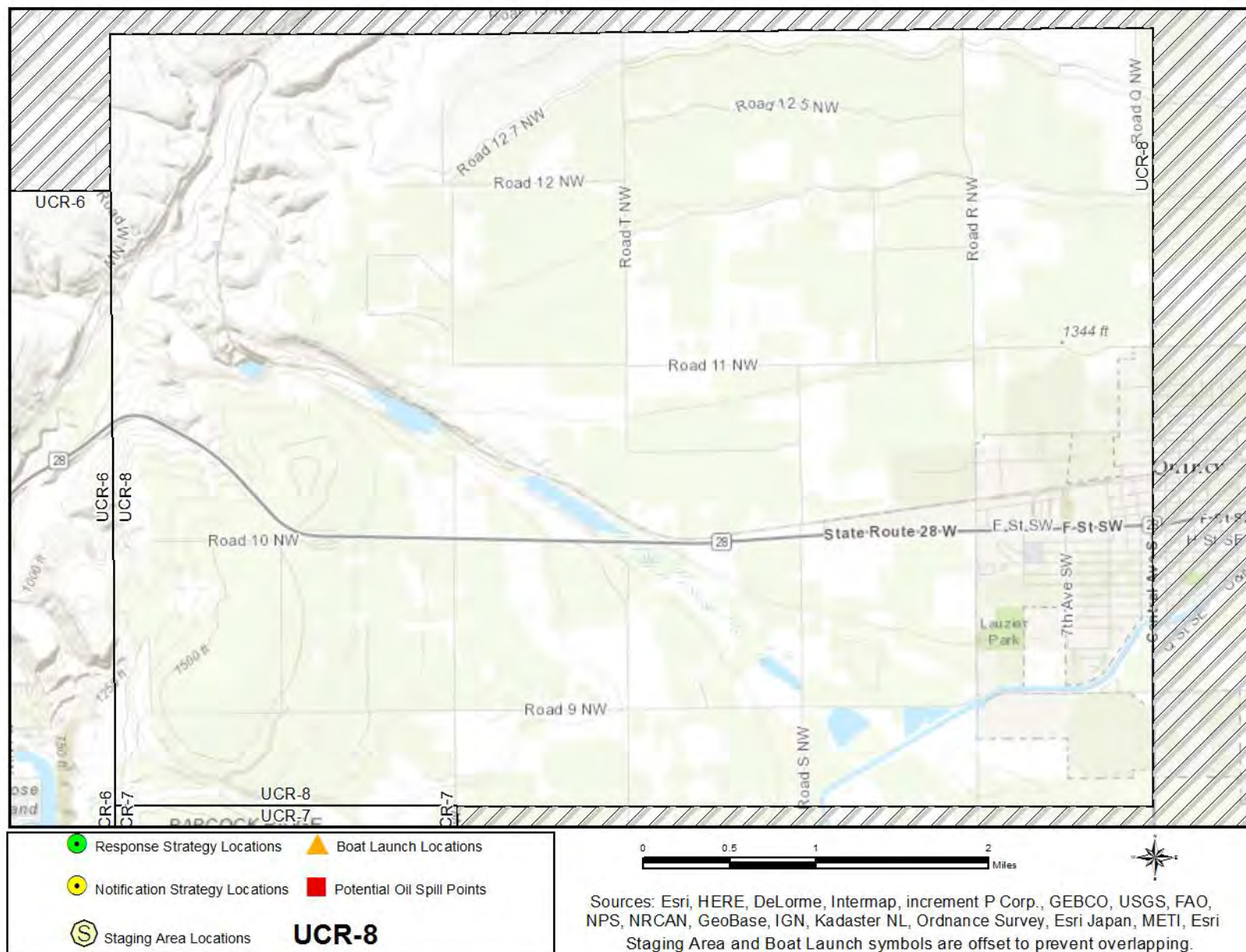


Figure 4-12: Sector Map UCR-6



25

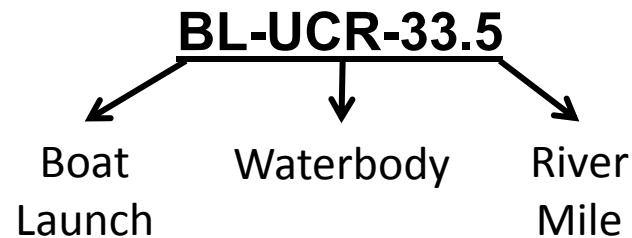


**Figure 4-14: Sector Map UCR-8**

## 4.5 MATRICES

### 4.5.1 Naming Conventions (Short Names)

Each strategy, staging area, and boat launch location in this document has been given a unique “Short Name” which includes one to six letters denoting the associated waterbody. Following the letters are numbers that specify the location. On rivers or other linear waterbodies, the location is named by river mile: the distance from the mouth of the river or creek upstream to the site location. Some short names indicate whether the site is located on river right, river left, or mid-river by an “R”, “L” or “M” after the river mile. On lakes, the numbers indicate the location by shoreline mile, typically starting at the northernmost point and increasing clockwise around the lake. In marine areas, the numbers do not have a geographic meaning. Notification strategies are indicated by an “-N” at the end of the name. Staging Areas and Boat Launches are indicated by the prefix “SA” or “BL”.



Associated waterbody short name designations used in this plan are: UCR = Upper Columbia River & WENA = Wenatchee River

#### 4.5.2 Response Strategy Matrices

Strategy Name	Location	Strategy Type	Boom Length	Boat Req?	Staging Area	Resources At Risk	Comments	Sector Map (Page #)	Strategy Details (Page#)
<a href="#">UCR-440.8a</a>	Crescent Bar Recreation Area-West 47.21424 -119.99840	Collection	Boom 700ft	Yes	Remote Stage equipment at <a href="#">SA-UCR-448.8</a> YoYo Rock WDFW Water Access Site (7800 Tarpiscan Rd, Malaga, WA 98828).	Public Recreation Site/Area, Riparian Area, Salmonids	Crescent Bar Recreation Area is managed by the Grant County Public Utility District. Notify Grant County PUD prior to deployment; call 800-216-5226.	<a href="#">50</a>	<a href="#">67</a>
<a href="#">UCR-440.8b</a>	Crescent Bar Recreation Area-East 47.21497 -119.99542	Exclusion	Boom 400ft, Sorbent 400ft	Yes	Remote Stage equipment at <a href="#">SA-UCR-448.8</a> YoYo Rock WDFW Water Access Site (7800 Tarpiscan Rd, Malaga, WA 98828).	Backwater Area, Public Recreation Site/Area, Salmonids	Crescent Bar Recreation Area is managed by the Grant County Public Utility District. Notify Grant County PUD prior to deployment; call 800-216-5226.	<a href="#">50</a>	<a href="#">69</a>
<a href="#">UCR-448.8</a>	YoYo Rock WDFW Water Access Site 47.28181 -120.09153	Collection	Boom 700ft	Yes	Onsite Stage equipment at <a href="#">SA-UCR-448.8</a> YoYo Rock WDFW Water Access Site (7800 Tarpiscan Rd, Malaga, WA 98828).	Boat Launch/Ramp, Riparian Area, Salmonids	YoYo Rock WDFW Water Access Site is managed by the Washington Department of Fish & Wildlife. Notify WDFW Region 2 prior to deployment; call 509-662-0452.	<a href="#">49</a>	<a href="#">71</a>

Strategy Name	Location	Strategy Type	Boom Length	Boat Req?	Staging Area	Resources At Risk	Comments	Sector Map (Page #)	Strategy Details (Page#)
<a href="#">UCR-458.9</a>	Left Bank RM 458.9 47.37527 -120.18929	Exclusion	Boom 200ft, Sorbent 200ft	Yes	Remote Stage equipment at <a href="#">SA-UCR-462.9</a> Kirby Billingsley Hydro Park (1430 WA-28 S, East Wenatchee, WA 98802).	Backwater Area, Salmonids	Left bank of Columbia River is part of Douglas County. Notify Douglas County Department of Emergency Management prior to deployment; call 509-888-6841.	<a href="#">47</a>	<a href="#">73</a>
<a href="#">UCR-462.7</a>	Kirby Billingsley Hydro Park 47.38652 -120.26333	Collection	Boom 700ft	Yes	Onsite Stage equipment at <a href="#">SA-UCR-462.9</a> Kirby Billingsley Hydro Park (1430 WA-28 S, East Wenatchee, WA 98802).	County Park, Riparian Area, Salmonids	Kirby Billingsley Hydro Park is managed by Chelan County Public Utility District. Notify Chelan County P.U.D. prior to deployment; call 509-661-4000.	<a href="#">47</a>	<a href="#">75</a>
<a href="#">UCR-466.8</a>	Wenatchee Riverfront Park-North 47.43265 -120.31082	Collection	Boom 700ft	Yes	Remote Stage equipment at <a href="#">SA-UCR-466.3</a> Wenatchee Riverfront Park (3 N Worthen St, Wenatchee, WA 98801).	County Park, Riparian Area, Salmonids	Strategy location is part of Wenatchee Riverfront Park. Notify Chelan County P.U.D. prior to deployment; call 509-661-4000.	<a href="#">47</a>	<a href="#">77</a>

Strategy Name	Location	Strategy Type	Boom Length	Boat Req?	Staging Area	Resources At Risk	Comments	Sector Map (Page #)	Strategy Details (Page#)
<a href="#">UCR-466.9</a>	Porter's Pond Nature Area 47.43519 -120.30597	Exclusion	Boom 900ft, Sorbent 900ft	Yes	Remote Stage equipment at <a href="#">SA-UCR-466.3</a> Wenatchee Riverfront Park (3 N Worthen St, Wenatchee, WA 98801).	Recreational Use Area, Riparian Area, Salmonids	Strategy location is part of Porter's Pond Nature Area. Notify Douglas County Department of Emergency Management prior to deployment; call 509-888-6841.	<a href="#">46</a>	<a href="#">79</a>
<a href="#">UCR-467.6</a>	Walla Walla Point Park-South 47.44432 -120.31411	Deflection	Boom 600ft	Yes	Remote Stage equipment at <a href="#">SA-UCR-466.3</a> Wenatchee Riverfront Park (3 N Worthen St, Wenatchee, WA 98801).	County Park, Riparian Area, Salmonids	Walla Walla Point Park is managed by Chelan County Public Utility District. Notify Chelan P.U.D. prior to deployment; call 509-661-4000.	<a href="#">46</a>	<a href="#">81</a>
<a href="#">UCR-467.8a</a>	Walla Walla Point Park-Pedestrian Bridge 47.44663 -120.31715	Exclusion	Boom 100ft, Sorbent 100ft	No	Onsite Stage equipment at Walla Walla Point Park (1351 Walla Walla Ave, Wenatchee, WA 98801).	County Park, Salmonids, Sensitive Resources Nearby	Walla Walla Point Park is managed by Chelan County Public Utility District. Notify Chelan P.U.D. prior to deployment; call 509-661-4000.	<a href="#">46</a>	<a href="#">83</a>

Strategy Name	Location	Strategy Type	Boom Length	Boat Req?	Staging Area	Resources At Risk	Comments	Sector Map (Page #)	Strategy Details (Page#)
<a href="#">UCR-467.8b</a>	Walla Walla Point Park-NE 47.44704 -120.31637	Collection	Boom 500ft	Yes	Remote Stage equipment at <a href="#">SA-UCR-466.3</a> Wenatchee Riverfront Park (3 N Worthen St, Wenatchee, WA 98801).	County Park, Riparian Area, Salmonids, Sensitive Resources Nearby	Walla Walla Point Park is managed by Chelan County Public Utility District. Notify Chelan P.U.D. prior to deployment; call 509-661-4000.	<a href="#">46</a>	<a href="#">85</a>
<a href="#">UCR-468.3</a>	Horan Nature Area 47.45424 -120.32467	Exclusion	Boom 300ft, Sorbent 300ft	Yes	Remote Stage equipment at <a href="#">SA-UCR-466.3</a> Wenatchee Riverfront Park (3 N Worthen St, Wenatchee, WA 98801).	Backwater Area, Salmonids, State Park	Strategy location is part of Wenatchee Confluence State Park. Notify Washington State Parks prior to deployment; call 509-664-6373.	<a href="#">46</a>	<a href="#">87</a>
<a href="#">UCR-468.6</a>	Wenatchee Confluence State Park-East 47.45855 -120.32394	Exclusion	Boom 200ft, Sorbent 200ft	Yes	Remote Stage equipment at <a href="#">SA-UCR-468.8</a> Wenatchee Confluence State Park (333 Olds Station Rd, Wenatchee, WA 98801).	Backwater Area, Salmon Habitat, State Park	Strategy location is part of Wenatchee Confluence State Park. Notify Washington State Parks prior to deployment; call 509-664-6373.	<a href="#">46</a>	<a href="#">89</a>

Strategy Name	Location	Strategy Type	Boom Length	Boat Req?	Staging Area	Resources At Risk	Comments	Sector Map (Page #)	Strategy Details (Page#)
<a href="#">UCR-472.7</a>	Right Bank RM 472.7 47.52073 -120.30349	Collection	Boom 700ft	Yes	Remote Stage equipment at <a href="#">SA-UCR-468.8</a> Wenatchee Confluence State Park (333 Olds Station Rd, Wenatchee, WA 98801).	Downstream Resources, Riparian Area, Salmonids	Strategy location is ~1 mile downriver from Rocky Reach Dam. Notify Chelan County P.U.D. prior to deployment; call 509-661-4000.	<a href="#">45</a>	<a href="#">91</a>
<a href="#">WENA-0.7</a>	Wenatchee Confluence State Park-South 47.45663 -120.32774	Exclusion	Boom 200ft, Sorbent 200ft	Yes	Remote Stage equipment at <a href="#">SA-UCR-468.8</a> Wenatchee Confluence State Park (333 Olds Station Rd, Wenatchee, WA 98801).	Backwater Area, Salmonids, State Park	Strategy location is part of Wenatchee Confluence State Park. Notify Washington State Parks prior to deployment; call 509-664-6373.	<a href="#">46</a>	<a href="#">93</a>
<a href="#">WENA-0.8</a>	Wenatchee Confluence State Park-West 47.45792 -120.32998	Exclusion	Boom 300ft, Sorbent 300ft	Yes	Remote Stage equipment at <a href="#">SA-UCR-468.8</a> Wenatchee Confluence State Park (333 Olds Station Rd, Wenatchee, WA 98801).	Backwater Area, Salmon Habitat, State Park	Strategy location is part of Wenatchee Confluence State Park. Notify Washington State Parks prior to deployment; call 509-664-6373. Strategy location is shallow.	<a href="#">46</a>	<a href="#">95</a>

#### 4.5.3 Notification Strategy Matrices

Strategy Name	Location	Strategy Type	Resources at Risk	Implementation	Comments	Sector Map (Page #)	Strategy Details (Page#)
<a href="#">UCR-453.4-N</a>	Rock Island Dam 47.34301 -120.09374	Notification	Lock and Dam	During Normal Business Hours and After Hours call CCPUD Dispatch at 509-661-4000. Inform them of any significant oil spill or potential spill that impacts or threatens the water resources of the Columbia River.	Notify Chelan County Public Utility District so that staff can protect the resources under their control.	<a href="#">47</a>	<a href="#">99</a>
<a href="#">UCR-460.4-N</a>	Greater Wenatchee Irrigation District 47.37789 -120.21851	Notification	Water Intakes	During Normal Business Hours and After Hours call GWID office at 509-884-4042. Inform them of any significant oil spill or potential spill that impacts or threatens the water resources of the Columbia River.	Notify Greater Wenatchee Irrigation District (GWID) so that staff can protect the resources under their control.	<a href="#">48</a>	<a href="#">101</a>

#### 4.5.4 Staging Area Matrices

Strategy Name	Location	Position	Nearest Address	Contact	Strategies Served	Comments	Sector Map (Page #)	Strategy Details (Page#)
<a href="#">SA-UCR-448.8</a>	YoYo Rock WDFW Water Access Site	47.28134 -120.09283	7800 Tarpiscan Rd Malaga, WA 98828	Washington Department of Fish & Wildlife Region 2 - Wenatchee District Office Wenatchee, WA 98801 509-662-0452	<a href="#">UCR-440.8a</a> <a href="#">UCR-440.8b</a> <a href="#">UCR-448.8</a>	YoYo Rock WDFW Water Access Site is managed by the Washington Department of Fish & Wildlife. Coordinate staging with WDFW Region 2 (Wenatchee District Office); call 509-662-0452.	<a href="#">49</a>	<a href="#">105</a>
<a href="#">SA-UCR-462.9</a>	Kirby Billingsley Hydro Park	47.38767 -120.26624	1430 WA-28 S East Wenatchee, WA 98802	Chelan County Public Utility District Dispatch 509-661-4000 Chelan County Public Utilities District Main Office 509-663-8121	<a href="#">UCR-458.9</a> <a href="#">UCR-462.7</a>	Kirby Billingsley Hydro Park is managed by the Chelan County Public Utility District. Coordinate staging with Chelan P.U.D.; call 509-661-4000.	<a href="#">47</a>	<a href="#">107</a>
<a href="#">SA-UCR-466.3</a>	Wenatchee Riverfront Park	47.42550 -120.30607	3 N Worthen St Wenatchee, WA 98801	Chelan County Public Utility District Dispatch Wenatchee, WA 98801 509-661-4000	<a href="#">UCR-466.8</a> <a href="#">UCR-466.9</a> <a href="#">UCR-467.6</a> <a href="#">UCR-467.8b</a> <a href="#">UCR-468.3</a>	Wenatchee Confluence State Park is managed by the Chelan County Public Utility District. Coordinate staging with Chelan P.U.D.; call 509-661-4000.	<a href="#">46</a>	<a href="#">109</a>

Strategy Name	Location	Position	Nearest Address	Contact	Strategies Served	Comments	Sector Map (Page #)	Strategy Details (Page#)
<a href="#">SA-UCR-468.8</a>	Wenatchee Confluence State Park	47.46246 -120.32172	333 Olds Station Rd Wenatchee, WA 98801	Washington State Parks and Recreation Commission Wenatchee Confluence State Park Wenatchee, WA 98801 509-664-6373	<a href="#">UCR-468.6</a> <a href="#">UCR-472.7</a> <a href="#">WENA-0.7</a> <a href="#">WENA-0.8</a>	Wenatchee Confluence State Park is managed by the Washington State Parks and Recreation Commission. Coordinate staging with the commission; call 509-664-6373.	<a href="#">46</a>	<a href="#">111</a>

#### 4.5.5 Boat Launch Matrices

Strategy Name	Name	Position	Nearest Address	Contact	Strategies Served	Comments	Sector Map (Page #)	Strategy Details (Page#)
<a href="#">BL-UCR-448.8</a>	YoYo Rock WDFW Water Access Site	47.28134 -120.09283	7800 Tarpiscan Rd Malaga, WA 98828	Washington Department of Fish & Wildlife Region 2 - Wenatchee District Office Wenatchee, WA 98801 509-662-0452	<a href="#">UCR-440.8a</a> <a href="#">UCR-440.8b</a> <a href="#">UCR-448.8</a>	YoYo Rock WDFW Water Access Site is managed by the Washington Department of Fish & Wildlife. Coordinate staging with WDFW Region 2 (Wenatchee District Office); call 509-662-0452.	<a href="#">49</a>	<a href="#">115</a>
<a href="#">BL-UCR-462.9</a>	Kirby Billingsley Hydro Park	47.38767 -120.26624	1430 WA-28 S East Wenatchee, WA 98802	Chelan County Public Utility District Dispatch 509-661-4000 Chelan County Public Utilities District Main Office 509-663-8121	<a href="#">UCR-458.9</a> <a href="#">UCR-462.7</a>	Kirby Billingsley Hydro Park is managed by the Chelan County Public Utility District. Coordinate staging with Chelan P.U.D.; call 509-661-4000.	<a href="#">47</a>	<a href="#">117</a>
<a href="#">BL-UCR-466.3</a>	Wenatchee Riverfront Park	47.42550 -120.30607	3 N Worthen St Wenatchee, WA 98801	Chelan County Public Utility District Dispatch Wenatchee, WA 98801 509-661-4000	<a href="#">UCR-466.8</a> <a href="#">UCR-466.9</a> <a href="#">UCR-467.6</a> <a href="#">UCR-467.8b</a> <a href="#">UCR-468.3</a>	Wenatchee Confluence State Park is managed by the Chelan County Public Utility District. Coordinate staging with Chelan P.U.D.; call 509-661-4000.	<a href="#">46</a>	<a href="#">119</a>

Strategy Name	Name	Position	Nearest Address	Contact	Strategies Served	Comments	Sector Map (Page #)	Strategy Details (Page#)
<a href="#">BL-UCR-468.8</a>	Wenatchee Confluence State Park	47.46246 -120.32172	333 Olds Station Rd Wenatchee, WA 98801	Washington State Parks and Recreation Commission Wenatchee Confluence State Park Wenatchee, WA 98801 509-664-6373	<a href="#">UCR-468.6</a> <a href="#">UCR-472.8</a> <a href="#">WENA-0.7</a> <a href="#">WENA-0.8</a>	Wenatchee Confluence State Park is managed by the Washington State Parks and Recreation Commission. Coordinate staging with the commission; call 509-664-6373.	<a href="#">46</a>	<a href="#">121</a>

**This page was intentionally left blank.**

**APPENDIX 4A**  
**Response Strategy 2-Pagers**

# RESPONSE STRATEGIES - LIST

UCR-440.8a	UCR-440.8b	UCR-448.8	UCR-458.9
UCR-462.7	UCR-466.8	UCR-466.9	UCR-467.6
UCR-467.8a	UCR-467.8b	UCR-468.3	UCR-468.6
UCR-472.8	WENA-0.7	WENA-0.8	

## Crescent Bar Recreation Area-West

UCR-440.8a

**Position - Location:** 47° 12.856', -119° 59.896' 47° 12' 51.4", -119° 59' 53.7" 47.21427, -119.99826 Malaga

**Strategy Objective:** Collection : Collect oil moving downstream on Columbia River.

**Implementation:** Transport 700ft boom to site using workboat. Secure one end to left bank at/near Point A (47.21357, -119.99766). Avoid anchoring to the pilings to the west. Extend remaining boom NW and anchor at/near Point B (47.21491, -119.99950). Use shoreside anchoring posts, trees, or existing structures to secure boom to shore. Use additional anchoring systems (as needed) to keep boom secure in water.

**Staging Area:** Remote : Stage equipment at [SA-UCR-448.8](#) YoYo Rock WDFW Water Access Site (7800 Tarpiscan Rd, Malaga, WA 98828).

**Site Safety:** Slips, Trips, Falls; Water Hazard

**Field Notes:** Crescent Bar Recreation Area is managed by the Grant County Public Utility District. Notify Grant County PUD prior to deployment; call 800-216-5226.

**Watercourse:** River - Below a Dam - Columbia River

**Resources at Risk:** Public Recreation Site/Area, Riparian Area, Salmonids, Sensitive Resources



### Recommended Equipment

9 Each	Anchoring System(s) - (anchor, lines, floats)
1 Each	Anchoring System(s)- Shoreside
700 Feet	Boom - B3 (River Boom) or equivalent
1 Each	Bridle(s) - Towing (appropriately sized for boom)
1 Each	Vac Truck or Skimmer and Storage
1 Each	Workboat(s) - of adequate size for type and amount of boom

### Recommended Personnel

1 Boat Operator
3 Laborer
1 Supervisor



UCR-440.8a Photo: Looking NE from near anchor point A. Photo is oriented upriver.

#### Site Contact

##### Grant County Public Utility District

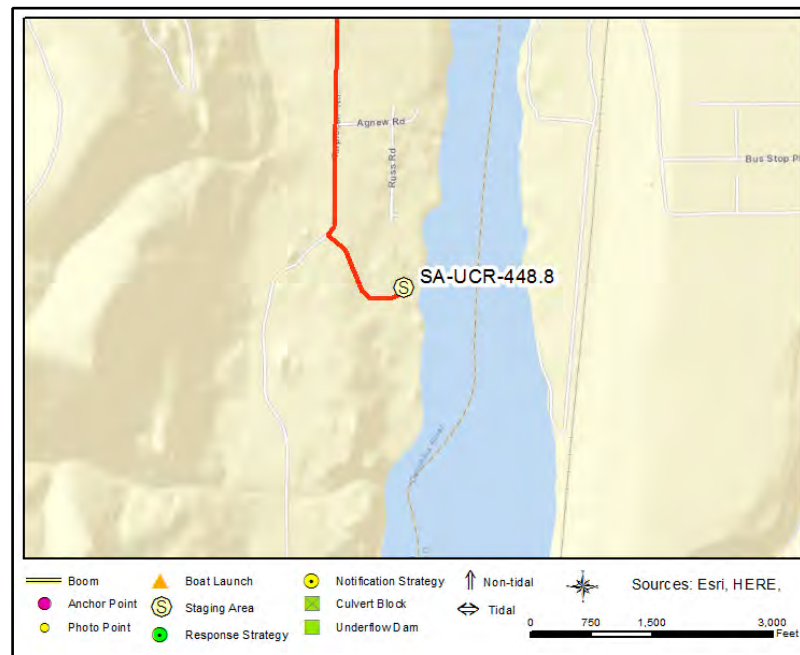
Land/Property Contact : Emergency Phone Number  
800-216-5226

##### Grant County Department of Emergency Management

Emergency Contact : 24-Hour Duty Officer  
509-237-2598

#### Nearest Address

7800 Tarpiscan Rd  
Malaga, WA 98828



#### Driving Directions

TO STAGING AREA/BOAT LAUNCH at YoYo Rock WDFW Water Access Site (SA-UCR-448.8 & BL-UCR-448.8):

1. Start in Wenatchee
2. Head south on Malaga Alcoa Hwy
3. At fork keep left on Malaga Alcoa Hwy (Malaga Hwy) (7.65 miles)
4. Continue on Colockum Rd (2.84 miles)
5. Bear left on Tarpiscan Rd (0.67 miles)
6. Turn right to stay on Tarpiscan Rd (0.75 miles)
7. Finish at 7800 Tarpiscan Rd, 98828, on the left

## Crescent Bar Recreation Area-East

UCR-440.8b

**Position - Location:** 47° 12.898', -119° 59.725' 47° 12' 53.9", -119° 59' 43.5" 47.21497, -119.99542 Malaga

**Strategy Objective:** Exclusion : Keep oil out of Columbia River backwater area.

**Implementation:** Transport 400ft boom to site using workboat. Secure one end to right bank at/near Point A (47.21461, -119.99611). Extend remaining boom NE and anchor at/near Point B (47.21534, -119.99494). Use shoreside anchoring posts, trees, or existing structures to secure boom to shore. Use additional anchoring systems (as needed) to keep boom secure in water.

**Staging Area:** Remote : Stage equipment at [SA-UCR-448.8](#) YoYo Rock WDFW Water Access Site (7800 Tarpiscan Rd, Malaga, WA 98828).

**Site Safety:** Slips, Trips, Falls; Water Hazard

**Field Notes:** Crescent Bar Recreation Area is managed by the Grant County Public Utility District. Notify Grant County PUD prior to deployment; call 800-216-5226.

**Watercourse:** River - Columbia River

**Resources at Risk:** Backwater Area, Public Recreation Site/Area, Salmonids, Sensitive Resources



### Recommended Equipment

5 Each	Anchoring System(s) - (anchor, lines, floats)
2 Each	Anchoring System(s)- Shoreside
400 Feet	Boom - B3 (River Boom) or equivalent
400 Feet	Boom - Sorbent
1 Each	Bridle(s) - Towing (appropriately sized for boom)
1 Each	Workboat(s) - of adequate size for type and amount of boom

### Recommended Personnel

1 Boat Operator
2 Laborer
1 Supervisor



UCR-440.8b Photo: Looking NE toward anchor point B. Water flows from left to right.

#### Site Contact

##### Grant County Public Utility District

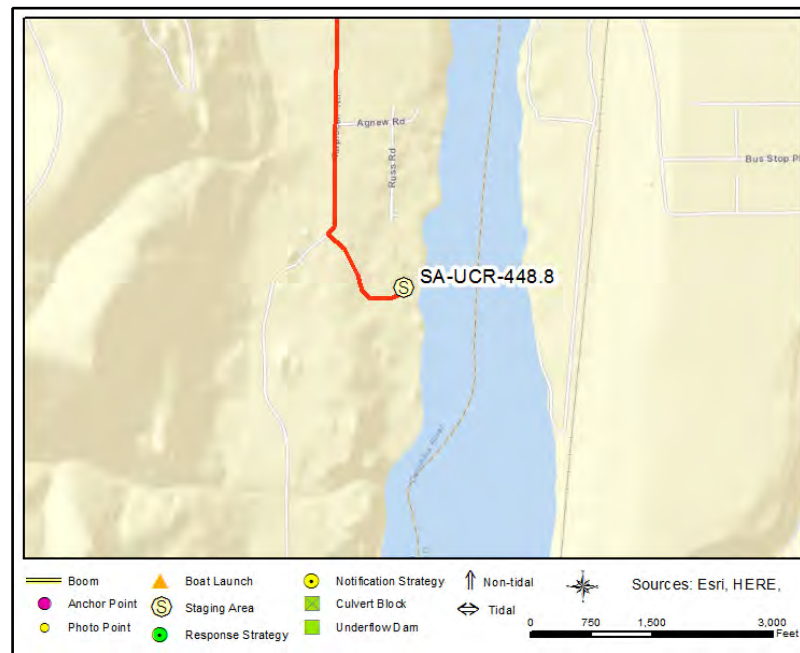
Land/Property Contact : Emergency Phone Number  
800-216-5226

##### Grant County Department of Emergency Management

Emergency Contact : 24-Hour Duty Officer  
509-237-2598

#### Nearest Address

7800 Tarpiscan Rd  
Malaga, WA 98828



#### Driving Directions

TO STAGING AREA/BOAT LAUNCH at YoYo Rock WDFW Water Access Site (SA-UCR-448.8 & BL-UCR-448.8):

1. Start in Wenatchee
2. Head south on Malaga Alcoa Hwy
3. At fork keep left on Malaga Alcoa Hwy (Malaga Hwy) (7.65 miles)
4. Continue on Colockum Rd (2.84 miles)
5. Bear left on Tarpiscan Rd (0.67 miles)
6. Turn right to stay on Tarpiscan Rd (0.75 miles)
7. Finish at 7800 Tarpiscan Rd, 98828, on the left

## YoYo Rock WDFW Water Access Site

UCR-448.8

**Position - Location:** 47° 16.908', -120° 5.492' 47° 16' 54.5", -120° 5' 29.5" 47.28180, -120.09153 Malaga

**Strategy Objective:** Collection : Collect oil moving downstream on Columbia River.

**Implementation:** Transport 1000ft boom to site using workboat. Secure one end to right bank at/near Point A (47.28118, -120.09236). Extend remaining boom NE and anchor at/near Point B (47.28250, -120.09047). Also, extend 300ft boom from boat ramp to Point C (47.28192, -120.09198) so as to keep oil off of shoreline. Place Point A on top of or as close to the boat ramp as possible. Use additional anchoring systems (as needed) to keep boom secure in water.

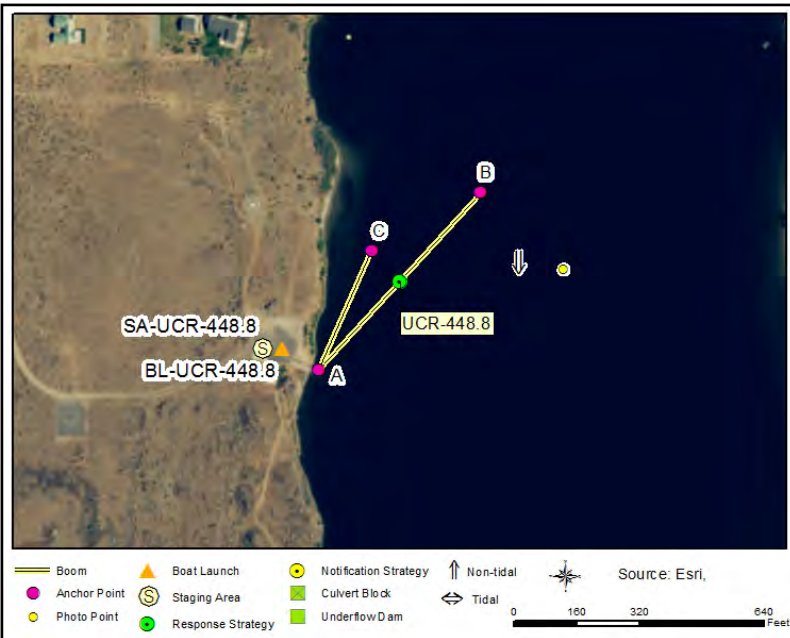
**Staging Area:** Onsite : Stage equipment at [SA-UCR-448.8](#) YoYo Rock WDFW Water Access Site (7800 Tarpiscan Rd, Malaga, WA 98828).

**Site Safety:** Slips, Trips, Falls; Water Hazard

**Field Notes:** YoYo Rock WDFW Water Access Site is managed by the Washington Department of Fish & Wildlife. Notify WDFW Region 2 prior to deployment; call 509-662-0452.

**Watercourse:** River - Below a Dam - Columbia River

**Resources at Risk:** Boat Launch/Ramp, Riparian Area, Salmonids, Sensitive Resources



### Recommended Equipment

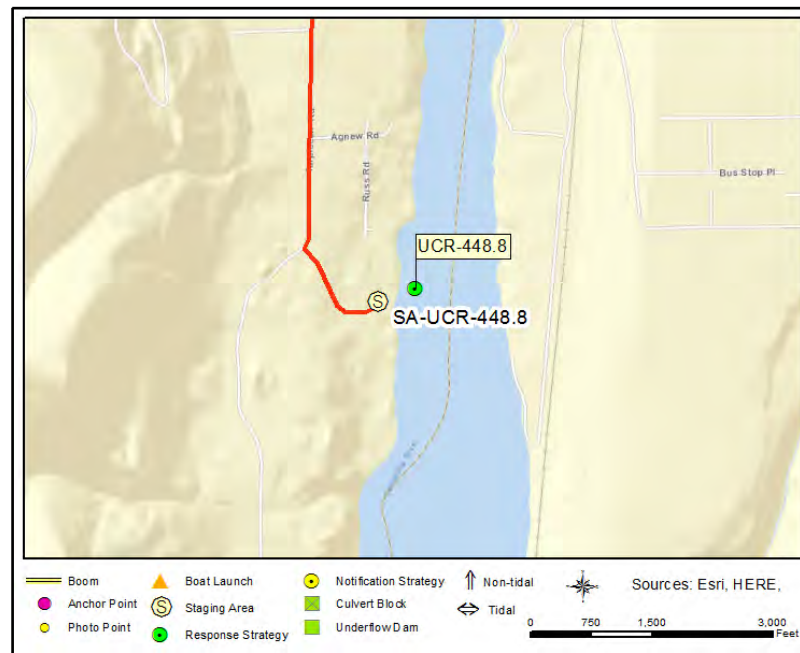
13	Each	Anchoring System(s) - (anchor, lines, floats)
1	Each	Anchoring System(s)- Shoreside
1000	Feet	Boom - B3 (River Boom) or equivalent
1	Each	Bridle(s) - Towing (appropriately sized for boom)
1	Each	Vac Truck or Skimmer and Storage
1	Each	Workboat(s) - of adequate size for type and amount of boom

### Recommended Personnel

1	Boat Operator
4	Laborer
1	Supervisor



UCR-448.8 Photo: Aerial photo looking west toward right bank of Columbia River. Water flows from right to left.



#### Site Contact

##### Washington Department of Fish & Wildlife

Land/Property Contact : Region 2 - Wenatchee District Office  
509-662-0452

##### Chelan County Department of Emergency Management

Emergency Contact : Assistant Director  
5096676864

#### Nearest Address

7800 Tarpiscan Rd  
Malaga, WA 98828

#### Driving Directions

TO STAGING AREA/BOAT LAUNCH at YoYo Rock WDFW Water Access Site (SA-UCR-448.8 & BL-UCR-448.8):

1. Start in Wenatchee
2. Head south on Malaga Alcoa Hwy
3. At fork keep left on Malaga Alcoa Hwy (Malaga Hwy) (7.65 miles)
4. Continue on Colockum Rd (2.84 miles)
5. Bear left on Tarpiscan Rd (0.67 miles)
6. Turn right to stay on Tarpiscan Rd (0.75 miles)
7. Finish at 7800 Tarpiscan Rd, 98828, on the left

**Left Bank RM 458.9** **UCR-458.9**

**Left Bank RM 458.9** **UCR-458.9**

<b>Position - Location:</b>	47° 22.516', -120° 11.357'	47° 22' 31.0", -120° 11' 21.4"	47.37527, -120.18929	East Wenatchee
-----------------------------	----------------------------	--------------------------------	----------------------	----------------

**Strategy Objective:** Exclusion : Keep oil out of Columbia River backwater area.

<b>Implementation:</b>	Transport 200ft boom to site using workboat. Secure one end to shore at/near Point A (47.37547, -120.18944). Extend remaining boom SSE and anchor at/near Point B (47.37509, -120.18915). Use shoreside anchoring posts, trees, or existing structures to secure boom to shore. Use additional anchoring systems (as needed) to keep boom secure in water.
------------------------	------------------------------------------------------------------------------------------------------------------------------------------------------------------------------------------------------------------------------------------------------------------------------------------------------------------------------------------------------------

**Staging Area:** Remote : Stage equipment at [SA-UCR-462.9](#) Kirby Billingsley Hydro Park (1430 WA-28 S, East Wenatchee, WA 98802).

**Site Safety:** Slips, Trips, Falls; Water Hazard

**Field Notes:** Left bank of Columbia River is part of Douglas County. Notify Douglas County Department of Emergency Management prior to deployment; call 509-888-6841.

**Watercourse:** River - Above a Dam - Columbia River

**Resources at Risk:** Backwater Area, Salmonids



### Recommended Equipment

2	Each	Anchoring System(s) - (anchor, lines, floats)
2	Each	Anchoring System(s)- Shoreside
200	Feet	Boom - B3 (River Boom) or equivalent
200	Feet	Boom - Sorbent
1	Each	Bridle(s) - Towing (appropriately sized for boom)
1	Each	Workboat(s) - of adequate size for type and amount of boom

Recommended Personnel	
1	1
2	2
3	3
4	4
5	5
6	6
7	7
8	8
9	9
10	10
11	11
12	12
13	13
14	14
15	15
16	16
17	17
18	18
19	19
20	20
21	21
22	22
23	23
24	24
25	25
26	26
27	27
28	28
29	29
30	30
31	31
32	32
33	33
34	34
35	35
36	36
37	37
38	38
39	39
40	40
41	41
42	42
43	43
44	44
45	45
46	46
47	47
48	48
49	49
50	50
51	51
52	52
53	53
54	54
55	55
56	56
57	57
58	58
59	59
60	60
61	61
62	62
63	63
64	64
65	65
66	66
67	67
68	68
69	69
70	70
71	71
72	72
73	73
74	74
75	75
76	76
77	77
78	78
79	79
80	80
81	81
82	82
83	83
84	84
85	85
86	86
87	87
88	88
89	89
90	90
91	91
92	92
93	93
94	94
95	95
96	96
97	97
98	98
99	99
100	100

1	Boat Operator
2	Laborer
1	Supervisor

## Left Bank RM 458.9

UCR-458.9



UCR-458.9 Photo: Looking NNE toward gap in left bank in Columbia River. Water flows from left to right.

### Site Contact

**Douglas County Department of Emergency Management**  
Emergency Contact : Director

East Wenatchee, WA 98802  
509-888-6841

### Nearest Address

1430 WA-28 S  
East Wenatchee, WA 98802



### Driving Directions

TO STAGING AREA/BOAT LAUNCH at Kirby Billingsley Hydro Park (SA-UCR-462.9 & BL-UCR-462.9):

1. Continue on WA-281 (State Route 281 N)
2. Turn left on WA-28 (F St SW) (27.72 miles)
3. Finish at 1430 State Highway 28 S, 98802, on the left

## Kirby Billingsley Hydro Park

UCR-462.7

**Position - Location:** 47° 23.191', -120° 15.800' 47° 23' 11.5", -120° 15' 48.0" 47.38652, -120.26333 East Wenatchee

**Strategy Objective:** Collection : Collect oil moving downstream on Columbia River.

**Implementation:** Transport 700ft boom to site using workboat. Secure one end to left bank at/near Point A (47.38636, -120.26191). Extend remaining boom WNW and anchor at/near Point B (47.38664, -120.26452). Use shoreside anchoring posts, trees, or existing structures to secure boom to shore. Use additional anchoring systems (as needed) to keep boom secure in water.

**Staging Area:** Onsite : Stage equipment at SA-UCR-462.9 Kirby Billingsley Hydro Park (1430 WA-28 S, East Wenatchee, WA 98802).

**Site Safety:** Slips, Trips, Falls; Water Hazard

**Field Notes:** Kirby Billingsley Hydro Park is managed by Chelan County Public Utility District. Notify Chelan County P.U.D. prior to deployment; call 509-661-4000.

**Watercourse:** River - Above a Dam - Columbia River

**Resources at Risk:** County Park, Riparian Area, Salmonids



### Recommended Equipment

9 Each	Anchoring System(s) - (anchor, lines, floats)
1 Each	Anchoring System(s)- Shoreside
700 Feet	Boom - B3 (River Boom) or equivalent
1 Each	Bridle(s) - Towing (appropriately sized for boom)
1 Each	Vac Truck or Skimmer and Storage
1 Each	Workboat(s) - of adequate size for type and amount of boom

### Recommended Personnel

1 Boat Operator
3 Laborer
1 Supervisor

## Kirby Billingsley Hydro Park

UCR-462.7



UCR-462.7 Photo: Looking west across Columbia River. Photo is oriented upriver.

### Site Contact

#### Chelan County Public Utility District

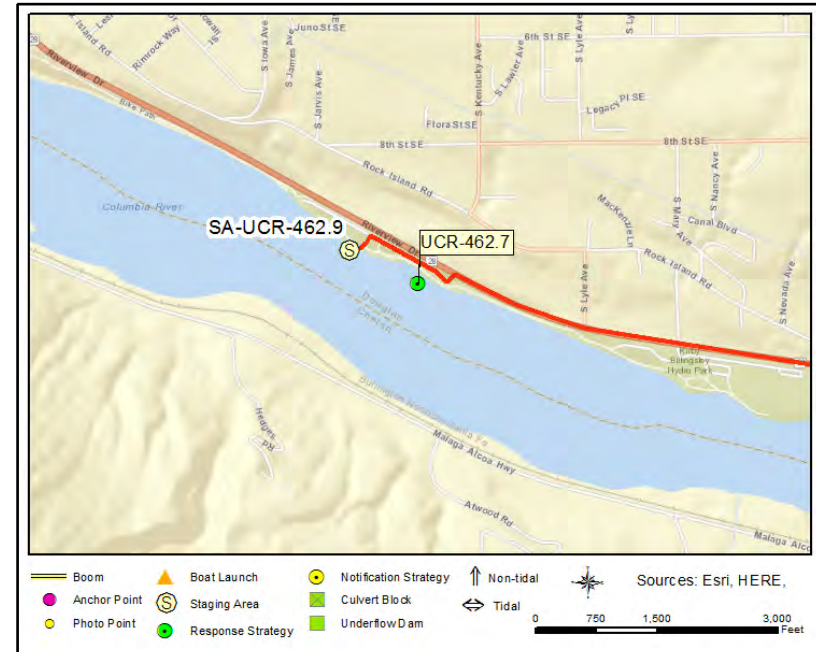
Land/Property Contact : Dispatch  
509-661-4000

#### Chelan County Public Utilities District

Land/Property Owner : Main Office  
509-663-8121

### Nearest Address

1430 State Highway 28 S  
East Wenatchee, WA 98802



### Driving Directions

TO STAGING AREA/BOAT LAUNCH at Kirby Billingsley Hydro Park (SA-UCR-462.9 & BL-UCR-462.9):

1. Continue on WA-281 (State Route 281 N)
2. Turn left on WA-28 (F St SW) (27.72 miles)
3. Finish at 1430 State Highway 28 S, 98802, on the left

## Wenatchee Riverfront Park-North

UCR-466.8

**Position - Location:** 47° 26.015', -120° 18.653' 47° 26' .9", -120° 18' 39.2" 47.43358, -120.31089 Wenatchee

**Strategy Objective:** Collection : Collect oil moving downstream on Columbia River.

**Implementation:** Transport 700ft boom to site using workboat. Secure one end to right bank near Point A. Extend remainder north and anchor near Point B. Use additional anchoring systems (as needed) to keep boom secure in water.

**Staging Area:** Remote: Stage equipment at SA-UCR-466.3 Wenatchee Riverfront Park (3 N Worthen St, Wenatchee, WA 98801).

**Site Safety:** Slips, Trips, Falls; Water Hazard

**Field Notes:** Strategy location is part of Wenatchee Riverfront Park. Notify Chelan County P.U.D. prior to deployment; call 509-661-4000.

**Watercourse:** River - Below a Dam - Columbia River

**Resources at Risk:** County Park, Riparian Habitat, Salmonids, Sensitive Resources



### Recommended Equipment

6 Each	Anchoring System(s) - (anchor, lines, floats)
1 Each	Anchoring System(s)- Shoreside
700 Feet	Boom - B3 (River Boom) or equivalent
1 Each	Bridle(s) - Towing (appropriately sized for boom)
1 Each	Vac Truck or Skimmer and Storage
1 Each	Workboat(s) - of adequate size for type and amount of boom

### Recommended Personnel

1	Boat Operator
3	Laborer
1	Supervisor

## Wenatchee Riverfront Park-North

UCR-466.8



UCR-466.8 Photo: Looking north toward anchor points B & C.  
Photo is oriented upriver.

### Site Contact

#### City of Wenatchee

Police Department/Sheriff : Police Department

Wenatchee, WA 98807

509-663-9911

### Nearest Address

3 N Worthen St  
Wenatchee, WA 98801



### Driving Directions

TO STAGING AREA/BOAT LAUNCH at Wenatchee Riverfront Park (SA-UCR-466.3 & BL-UCR-466.3):

1. Go north on WA-281 (State Route 281 N)
2. Turn right on WA-28 (F St SW)
3. Keep left to proceed on WA-285 N toward Wenatchee
4. Bear right onto ramp toward US-2 BUSINESS / City Center
5. Bear right on S Wenatchee Ave
6. Turn Right on Spokane Street
7. Turn Left on Columbia Street
8. Turn Right on Thurston Street
9. Turn left on N Worthen St
10. Turn right into park and follow road to boat launch behind Pybus Public Market

## Porter's Pond Nature Area

UCR-466.9

**Position - Location:** 47° 26.111', -120° 18.358' 47° 26' 6.7", -120° 18' 21.5" 47.43519, -120.30597 Wenatchee

**Strategy Objective:** Exclusion : Keep oil out of Porter's Pond Nature Area.

**Implementation:** Transport 900ft boom to site using workboat. Secure one end to left bank at/near Point A (47.43645, -120.30563). Extend remaining boom SSW and anchor at/near Point C (47.43407, -120.30593). Near boom midpoint, use workboat to pull boom west into the river creating a chevron (west-pointing apex); anchor at/near Point B (47.43527, -120.30611). Use shoreside anchoring posts, trees, or existing structures to secure boom to shore. Use additional anchoring systems (as needed) to keep boom secure in water.

**Staging Area:** Remote : Stage equipment at [SA-UCR-466.3](#) Wenatchee Riverfront Park (3 N Worthen St, Wenatchee, WA 98801).

**Site Safety:** Slips, Trips, Falls; Water Hazard

**Field Notes:** Strategy location is part of Porter's Pond Nature Area. Notify Douglas County Department of Emergency Management prior to deployment; call 509-888-6841.

**Watercourse:** River - Below a Dam - Columbia River

**Resources at Risk:** Recreational Use Area, Riparian Area, Salmonids



### Recommended Equipment

12	Each	Anchoring System(s) - (anchor, lines, floats)
2	Each	Anchoring System(s)- Shoreside
900	Feet	Boom - B3 (River Boom) or equivalent
900	Feet	Boom - Sorbent
1	Each	Bridle(s) - Towing (appropriately sized for boom)
1	Each	Workboat(s) - of adequate size for type and amount of boom

### Recommended Personnel

1	Boat Operator
3	Laborer
1	Supervisor



UCR-466.9 Photo: Looking east toward left bank of Columbia River. Water flows from left to right.

#### Site Contact

**Douglas County Department of Emergency Management**  
Emergency Contact : Director

East Wenatchee, WA 98802  
509-888-6841

#### Nearest Address

3 N Worthen St  
Wenatchee, WA 98801



#### Driving Directions

TO STAGING AREA/BOAT LAUNCH at Wenatchee Riverfront Park (SA-UCR-466.3 & BL-UCR-466.3):

1. Go north on WA-281 (State Route 281 N)
2. Turn right on WA-28 (F St SW) (29.59 miles)
3. Keep left to proceed on WA-285 N toward Wenatchee (0.48 miles)
4. Bear right onto ramp toward US-2 BUSINESS / City Center (0.1 miles)
5. Bear right on S Wenatchee Ave (0.36 miles)
6. Turn left on Peachey St (Peachy St) (0.07 miles)
7. Turn right on S Mission St (WA-285) (0.63 miles)
8. Turn right on Orondo Ave (0.23 miles)
9. Turn left on N Worthen St
10. Turn right into park and follow road to boat launch behind Pybus Public Market

## Walla Walla Point Park-South UCR-467.6

## Walla Walla Point Park-South UCR-467.6

<b>Position - Location:</b>	47° 26.659', -120° 18.847'	47° 26' 39.6", -120° 18' 50.8"	47.44432, -120.31411	Wenatchee
-----------------------------	----------------------------	--------------------------------	----------------------	-----------

**Strategy Objective:** Deflection : Keep oil away from Walla Walla Point Park shoreline.

<b>Implementation:</b>	Transport 600ft boom to site using workboat. Secure one end to right bank at/near Point A (47.44474, -120.31475). Extend remaining boom SE and anchor at/near Point B (47.44381, -120.31289). Use shoreside anchoring posts, trees, or existing structures to secure boom to shore. Use additional anchoring systems (as needed) to keep boom secure in water.
------------------------	----------------------------------------------------------------------------------------------------------------------------------------------------------------------------------------------------------------------------------------------------------------------------------------------------------------------------------------------------------------

**Staging Area:** Remote : Stage equipment at [SA-UCR-466.3](#) Wenatchee Riverfront Park (3 N Worthen St, Wenatchee, WA 98801).

**Site Safety:** Slips, Trips, Falls; Rocky Shoreline; Water Hazard; Wildlife Hazard

<b>Field Notes:</b>	Walla Walla Point Park is managed by Chelan County Public Utility District. Notify Chelan P.U.D. prior to deployment; call 509-661-4000.
---------------------	------------------------------------------------------------------------------------------------------------------------------------------

**Watercourse:** River - Below a Dam - Columbia River

**Resources at Risk:** County Park, Riparian Area, Salmonids



### Recommended Equipment

8	Each	Anchoring System(s) - (anchor, lines, floats)
1	Each	Anchoring System(s)- Shoreside
600	Feet	Boom - B3 (River Boom) or equivalent
1	Each	Bridle(s) - Towing (appropriately sized for boom)
1	Each	Workboat(s) - of adequate size for type and amount of boom

Recommended Personnel	
1	1
2	2
3	3
4	4
5	5
6	6
7	7
8	8
9	9
10	10
11	11
12	12
13	13
14	14
15	15
16	16
17	17
18	18
19	19
20	20
21	21
22	22
23	23
24	24
25	25
26	26
27	27
28	28
29	29
30	30
31	31
32	32
33	33
34	34
35	35
36	36
37	37
38	38
39	39
40	40
41	41
42	42
43	43
44	44
45	45
46	46
47	47
48	48
49	49
50	50
51	51
52	52
53	53
54	54
55	55
56	56
57	57
58	58
59	59
60	60
61	61
62	62
63	63
64	64
65	65
66	66
67	67
68	68
69	69
70	70
71	71
72	72
73	73
74	74
75	75
76	76
77	77
78	78
79	79
80	80
81	81
82	82
83	83
84	84
85	85
86	86
87	87
88	88
89	89
90	90
91	91
92	92
93	93
94	94
95	95
96	96
97	97
98	98
99	99
100	100

1	Boat Operator
3	Laborer
1	Supervisor

## Walla Walla Point Park-South

UCR-467.6



UCR-467.6 Photo: Looking NW toward Walla Walla Point Park lagoon. Photo is oriented upriver.

### Site Contact

#### Chelan County Public Utilities District

Primary Contact : System Operations (Lake Chelan Dam)  
509-661-4000

#### Chelan County Public Utility District

Land/Property Contact : Dispatch  
509-661-4000

### Nearest Address

3 N Worthen St  
Wenatchee, WA 98801



### Driving Directions

TO STAGING AREA/BOAT LAUNCH at Wenatchee Riverfront Park (SA-UCR-466.3 & BL-UCR-466.3):

1. Go north on WA-281 (State Route 281 N)
2. Turn right on WA-28 (F St SW) (29.59 miles)
3. Keep left to proceed on WA-285 N toward Wenatchee (0.48 miles)
4. Bear right onto ramp toward US-2 BUSINESS / City Center (0.1 miles)
5. Bear right on S Wenatchee Ave (0.36 miles)
6. Turn left on Peachey St (Peachy St) (0.07 miles)
7. Turn right on S Mission St (WA-285) (0.63 miles)
8. Turn right on Orondo Ave (0.23 miles)
9. Turn left on N Worthen St
10. Turn right into park and follow road to boat launch behind Pybus Public Market

# Walla Walla Point Park-Pedestrian Bridge

UCR-467.8a

**Position - Location:** 47° 26.798', -120° 19.029' 47° 26' 47.9", -120° 19' 1.7" 47.44663, -120.31715 Wenatchee

**Strategy Objective:** Exclusion : Keep oil out of small inlet south of pedestrian bridge.

**Implementation:** Transport 100ft boom to site using vehicle. Secure one end to river bank at/near Point A (47.44665, -120.31729). Extend remaining boom ESE and anchor at/near Point B (47.44657, -120.31696). Use shoreside anchoring posts, trees, or existing structures to secure boom to shore. Use additional anchoring systems (as needed) to keep boom secure in water.

**Staging Area:** Onsite : Stage equipment at Walla Walla Point Park (1351 Walla Walla Ave, Wenatchee, WA 98801).

**Site Safety:** Slips, Trips, Falls; Rocky Shoreline; Water Hazard

**Field Notes:** Walla Walla Point Park is managed by Chelan County Public Utility District. Notify Chelan P.U.D. prior to deployment; call 509-661-4000.

**Watercourse:** River - Below a Dam - Columbia River

**Resources at Risk:** County Park, Salmonids, Sensitive Resources Nearby



## Recommended Equipment

1	Each	Anchoring System(s) - (anchor, lines, floats)
2	Each	Anchoring System(s)- Shoreside
100	Feet	Boom - B3 (River Boom) or equivalent
100	Feet	Boom - Sorbent
1	Each	Heaving Line(s)
100	Feet	Line - 1/2" poly line

## Recommended Personnel

2	Laborer
1	Supervisor

## Walla Walla Point Park-Pedestrian Bridge

UCR-467.8a



UCR-467.8a Photo: Looking ESE towards far side of bridge.  
Photo is oriented downriver.

### Site Contact

#### Chelan County Public Utility District

Emergency Contact : Dispatch  
509-661-4000

#### Chelan County Public Utilities District

Primary Contact : System Operations (Lake Chelan Dam)  
509-661-4000

### Nearest Address

1351 Walla Walla Ave  
Wenatchee, WA 98801



### Driving Directions

1. Head east on I-90 towards George, WA
2. At exit 149 take ramp on the right to WA-281 N toward Quincy / Wenatchee (0.23 miles)
3. Turn left on WA-281 (State Route 281 N) toward Quincy / Wenatchee (10.62 miles)
4. Turn left on WA-28 (F St SW) (29.59 miles)
5. Keep left to proceed on WA-285 N toward Wenatchee (0.68 miles)
6. Turn right at Stevens St / S Mission St to stay on WA-285 (S Mission St) (1.95 miles)
7. Make sharp right on 9th St (0.31 miles)
8. Turn left on Walla Walla Ave (0.5 miles)
9. Turn right into Walla Walla Point Park. Take road to the north and follow Apple Cove Loop Trail to bridge, NE of parking area.

## Walla Walla Point Park-NE

UCR-467.8b

**Position - Location:** 47° 26.822', -120° 18.982' 47° 26' 49.3", -120° 18' 58.9" 47.44704, -120.31637 Wenatchee

**Strategy Objective:** Collection : Collect oil moving downstream on Columbia River.

**Implementation:** Transport 500ft boom to site using workboat. Secure one end to right bank at/near Point A (47.44634, -120.31628). Extend remaining boom NNE and anchor at/near Point B (47.44763, -120.31644). Use shoreside anchoring posts or existing structures to secure boom to shore. Use additional anchoring systems (as needed) to keep boom secure in water.

**Staging Area:** Remote : Stage equipment at [SA-UCR-466.3](#) Wenatchee Riverfront Park (3 N Worthen St, Wenatchee, WA 98801).

**Site Safety:** Slips, Trips, Falls; Rocky Shoreline; Water Hazard; Wildlife Hazard

**Field Notes:** Walla Walla Point Park is managed by Chelan County Public Utility District. Notify Chelan P.U.D. prior to deployment; call 509-661-4000.

**Watercourse:** River - Below a Dam - Columbia River

**Resources at Risk:** County Park, Riparian Area, Salmonids, Sensitive Resources Nearby



### Recommended Equipment

6 Each	Anchoring System(s) - (anchor, lines, floats)
1 Each	Anchoring System(s)- Shoreside
500 Feet	Boom - B3 (River Boom) or equivalent
1 Each	Bridle(s) - Towing (appropriately sized for boom)
1 Each	Skimmer (appropriately sized) with Portable Storage
1 Each	Workboat(s) - of adequate size for type and amount of boom

### Recommended Personnel

1 Boat Operator
3 Laborer
1 Supervisor

## Walla Walla Point Park-NE

**UCR-467.8b**



UCR-467.8b Photo: Looking NNW toward Wenatchee Confluence State Park. Photo is oriented upriver.



### Site Contact

**Chelan County Public Utility District**  
Land/Property Contact : Dispatch

Wenatchee, WA 98801  
509-661-4000

## Nearest Address

3 N Worthen St  
Wenatchee, WA 98801

### Driving Directions

TO STAGING AREA/BOAT LAUNCH at Wenatchee Riverfront Park (SA-UCR-466.3 & BL-UCR-466.3):

1. Go north on WA-281 (State Route 281 N)
2. Turn right on WA-28 (F St SW) (29.59 miles)
3. Keep left to proceed on WA-285 N toward Wenatchee (0.48 miles)
4. Bear right onto ramp toward US-2 BUSINESS / City Center (0.1 miles)
5. Bear right on S Wenatchee Ave (0.36 miles)
6. Turn left on Peachey St (Peachy St) (0.07 miles)
7. Turn right on S Mission St (WA-285) (0.63 miles)
8. Turn right on Orondo Ave (0.23 miles)
9. Finish at Apple Capitol Recreational Loop Trail, 98801, on the right

## Horan Nature Area

UCR-468.3

**Position - Location:** 47° 27.254', -120° 19.480' 47° 27' 15.3", -120° 19' 28.8" 47.45424, -120.32467 Wenatchee

**Strategy Objective:** Exclusion : Keep oil out of Horan Nature Area.

**Implementation:** Transport 300ft boom to site using workboat. Secure one end to shore at/near Point A (47.45447, -120.32504). Extend remaining boom SE and anchor at/near Point B (47.45403, -120.32434). Do not use shoreside anchoring posts to secure boom to shore. Use additional anchoring systems (as needed) to keep boom secure in water.

**Staging Area:** Remote : Stage equipment at [SA-UCR-466.3](#) Wenatchee Riverfront Park (3 N Worthen St, Wenatchee, WA 98801).

**Site Safety:** Slips, Trips, Falls; Water Hazard

**Field Notes:** Strategy location is part of Wenatchee Confluence State Park. Notify Washington State Parks prior to deployment; call 509-664-6373.

**Watercourse:** River - Below a Dam - Columbia River

**Resources at Risk:** Backwater Area, Salmonids, Sensitive Resources, State Park



### Recommended Equipment

4 Each	Anchoring System(s) - (anchor, lines, floats)
300 Feet	Boom - B3 (River Boom) or equivalent
300 Feet	Boom - Sorbent
1 Each	Bridle(s) - Towing (appropriately sized for boom)
1 Each	Workboat(s) - of adequate size for type and amount of boom

### Recommended Personnel

1	Boat Operator
2	Laborer
1	Supervisor



UCR-468.3 Photo: Looking south toward Wenatchee Confluence State Park. Water flows from right to left.

## Site Contact

**Washington State Parks and Recreation Commission**  
Land/Property Contact : Wenatchee Confluence State Park

Wenatchee, WA 98801  
509-664-6373

## Nearest Address

3 N Worthen St  
Wenatchee, WA 98801



## Driving Directions

TO STAGING AREA/BOAT LAUNCH at Wenatchee Riverfront Park (SA-UCR-466.3 & BL-UCR-466.3):

1. Go north on WA-281 (State Route 281 N)
2. Turn right on WA-28 (F St SW) (29.59 miles)
3. Keep left to proceed on WA-285 N toward Wenatchee (0.48 miles)
4. Bear right onto ramp toward US-2 BUSINESS / City Center (0.1 miles)
5. Bear right on S Wenatchee Ave (0.36 miles)
6. Turn left on Peachey St (Peachy St) (0.07 miles)
7. Turn right on S Mission St (WA-285) (0.63 miles)
8. Turn right on Orondo Ave (0.23 miles)
9. Finish at 3 N Worthen St, 98801, on the right

## Wenatchee Confluence State Park-East

UCR-468.6

**Position - Location:** 47° 27.513', -120° 19.436' 47° 27' 30.8", -120° 19' 26.2" 47.45855, -120.32394 Wenatchee

**Strategy Objective:** Exclusion : Keep oil out of Wenatchee Confluence State Park.

**Implementation:** Transport 200ft boom to site using workboat. Secure one end to shore at/near Point A (47.45883, -120.32384). Extend remaining boom SSW and anchor at/near Point B (47.45830, -120.32401). Do not use shoreside anchoring posts to secure boom to shore. Use additional anchoring systems (as needed) to keep boom secure in water.

**Staging Area:** Remote : Stage equipment at [SA-UCR-468.8](#) Wenatchee Confluence State Park (333 Olds Station Rd, Wenatchee, WA 98801).

**Site Safety:** Slips, Trips, Falls; Water Hazard

**Field Notes:** Strategy location is part of Wenatchee Confluence State Park. Notify Washington State Parks prior to deployment; call 509-664-6373.

**Watercourse:** River - Below a Dam - Columbia River

**Resources at Risk:** Backwater Area, Salmon Habitat, Sensitive Resources, State Park



### Recommended Equipment

3 Each	Anchoring System(s) - (anchor, lines, floats)
200 Feet	Boom - B3 (River Boom) or equivalent
200 Feet	Boom - Sorbent
1 Each	Bridle(s) - Towing (appropriately sized for boom)
1 Each	Workboat(s) - of adequate size for type and amount of boom

### Recommended Personnel

1	Boat Operator
2	Laborer
1	Supervisor



UCR-468.6 Photo: Looking WNW toward Wenatchee Confluence State Park. Water flows from right to left.

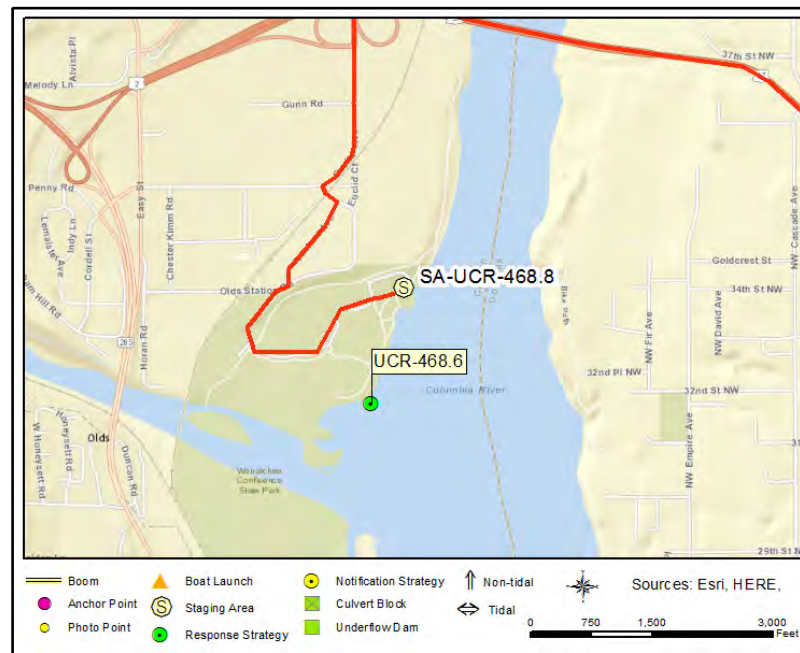
#### Site Contact

**Washington State Parks and Recreation Commission**  
Land/Property Contact : Wenatchee Confluence State Park

Wenatchee, WA 98801  
509-664-6373

#### Nearest Address

333 Olds Station Rd  
Wenatchee, WA 98801



#### Driving Directions

TO STAGING AREA/BOAT LAUNCH at Wenatchee Confluence State Park (SA-UCR-468.8 & BL-UCR-468.8):

1. Go north on WA-281 (State Route 281 N)
2. Turn left on WA-28 (F St SW)
3. Turn left on US-2 (US-97) (1.02 miles)
4. Take ramp on the right to US-97-ALT N toward Entiat / Chelan (0.24 miles)
5. Turn left on US-97-ALT (State Highway 97A) (0.15 miles)
6. Continue on Euclid Ave (0.36 miles)
7. Turn left at Penny Rd to stay on Euclid Ave (0.05 miles)
8. Turn right on Isenhardt Ave (0.23 miles)
9. Turn right on Olds Station Rd (0.03 miles)
10. Finish at 333 Olds Station Rd, 98801, on the left

## Right Bank RM 472.8

UCR-472.8

**Position - Location:** 47° 31.294', -120° 18.205' 47° 31' 17.6", -120° 18' 12.3" 47.52156, -120.30342 Wenatchee

**Strategy Objective:** Collection : Collect oil moving downstream on Columbia River.

**Implementation:** Transport 700ft boom to site using workboat. Secure one end to right bank at/near Point A (47.52018, -120.30437). Extend remaining boom NE and anchor at/near Point B (47.52157, -120.30265). Use shoreside anchoring posts, trees, or existing structures to secure boom to shore. Use additional anchoring systems (as needed) to keep boom secure in water.

**Staging Area:** Remote : Stage equipment at [SA-UCR-468.8](#) Wenatchee Confluence State Park (333 Olds Station Rd, Wenatchee, WA 98801).

**Site Safety:** Slips, Trips, Falls; Water Hazard; Steep Banks; Loose Rock

**Field Notes:** Strategy location is 0.9 miles downriver from Rocky Reach Dam. Notify Chelan County P.U.D. prior to deployment; call 509-661-4000.

**Watercourse:** River - Below a Dam - Columbia River

**Resources at Risk:** Downstream Resources, Riparian Area, Salmonids, Sensitive Resources



### Recommended Equipment

9 Each	Anchoring System(s) - (anchor, lines, floats)
1 Each	Anchoring System(s)- Shoreside
700 Feet	Boom - B3 (River Boom) or equivalent
1 Each	Bridle(s) - Towing (appropriately sized for boom)
1 Each	Vac Truck or Skimmer and Storage
1 Each	Workboat(s) - of adequate size for type and amount of boom

### Recommended Personnel

1 Boat Operator
3 Laborer
1 Supervisor



UCR-472.8 Photo: Looking NE toward anchor point B. Water flows from left to right.

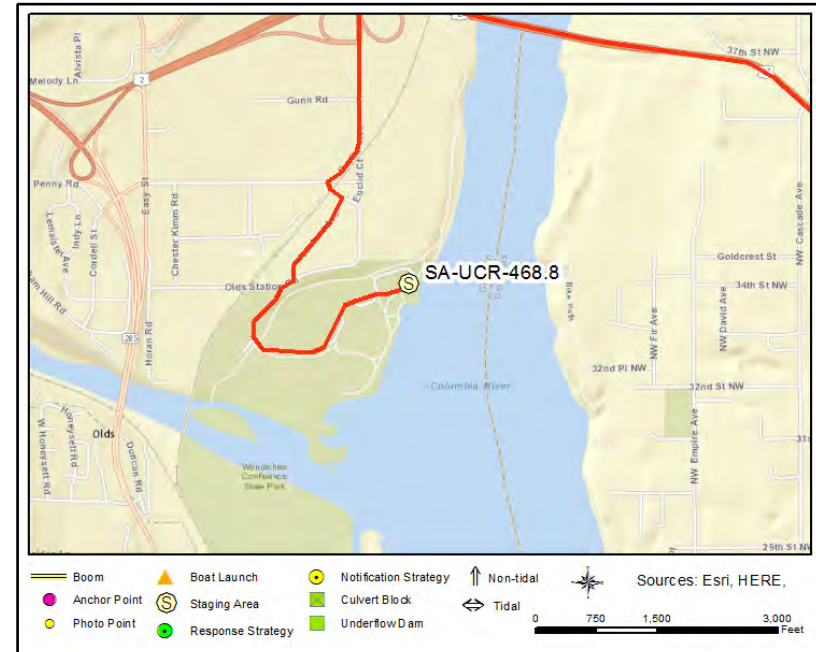
#### Site Contact

**Chelan County Public Utility District**  
Land/Property Contact : Dispatch

Wenatchee, WA 98801  
509-661-4000

#### Nearest Address

333 Olds Station Rd  
Wenatchee, WA 98801



#### Driving Directions

TO STAGING AREA/BOAT LAUNCH at Wenatchee Confluence State Park (SA-UCR-468.8 & BL-UCR-468.8):

1. Go north on WA-281 (State Route 281 N)
2. Turn left on WA-28 (F St SW)
3. Turn left on US-2 (US-97) (1.02 miles)
4. Take ramp on the right to US-97-ALT N toward Entiat / Chelan (0.24 miles)
5. Turn left on US-97-ALT (State Highway 97A) (0.15 miles)
6. Continue on Euclid Ave (0.36 miles)
7. Turn left at Penny Rd to stay on Euclid Ave (0.05 miles)
8. Turn right on Isenhardt Ave (0.23 miles)
9. Turn right on Olds Station Rd (0.03 miles)
10. Finish at 333 Olds Station Rd, 98801, on the left

Wenatchee Confluence State Park-South WENA-0.7

Wenatchee Confluence State Park-South WENA-0.7

<b>Position - Location:</b>	47° 27.398', -120° 19.664'	47° 27' 23.9", -120° 19' 39.9"	47.45663, -120.32774	Wenatchee
-----------------------------	----------------------------	--------------------------------	----------------------	-----------

**Strategy Objective:** Exclusion : Keep oil out of Wenatchee Confluence State Park.

<b>Implementation:</b>	Transport 200ft boom to site using workboat. Secure one end to shore at/near Point A (47.45670, -120.32807). Extend remaining boom ESE and anchor at/near Point B (47.45654, -120.32739). Do not use shoreside anchoring posts to secure boom to shore. Use additional anchoring systems (as needed) to keep boom secure in water.
------------------------	------------------------------------------------------------------------------------------------------------------------------------------------------------------------------------------------------------------------------------------------------------------------------------------------------------------------------------

**Staging Area:** Remote : Stage equipment at [SA-UCR-468.8](#) Wenatchee Confluence State Park (333 Olds Station Rd, Wenatchee, WA 98801).

**Site Safety:** Slips, Trips, Falls; Water Hazard

**Field Notes:** Strategy location is part of Wenatchee Confluence State Park. Notify Washington State Parks prior to deployment; call 509-664-6373.

**Watercourse:** River - Wenatchee River

**Resources at Risk:** Backwater Area, Salmonids, Sensitive Resources, State Park



### Recommended Equipment

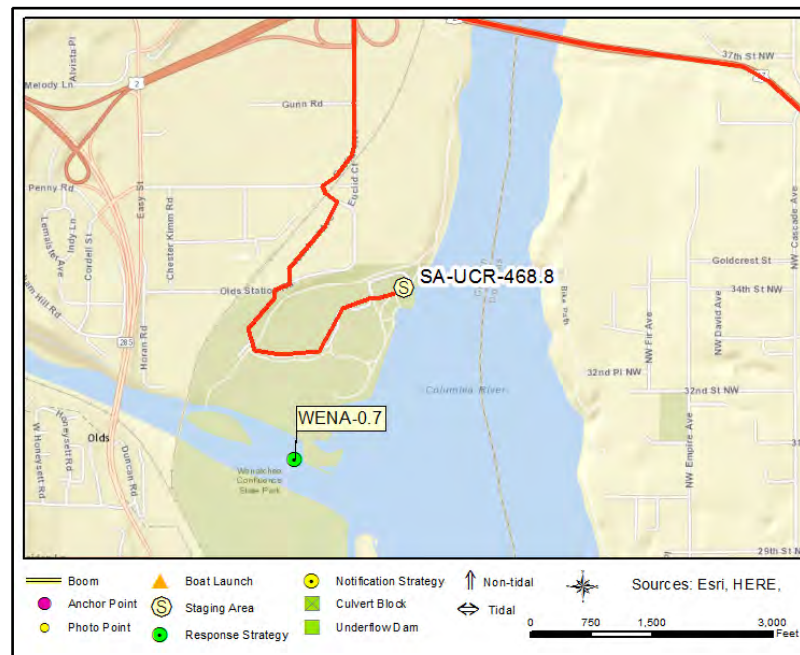
3	Each	Anchoring System(s) - (anchor, lines, floats)
200	Feet	Boom - B3 (River Boom) or equivalent
200	Feet	Boom - Sorbent
1	Each	Bridle(s) - Towing (appropriately sized for boom)
1	Each	Workboat(s) - of adequate size for type and amount of boom

Recommended Personnel	
1	1
2	2
3	3
4	4
5	5
6	6
7	7
8	8
9	9
10	10
11	11
12	12
13	13
14	14
15	15
16	16
17	17
18	18
19	19
20	20
21	21
22	22
23	23
24	24
25	25
26	26
27	27
28	28
29	29
30	30
31	31
32	32
33	33
34	34
35	35
36	36
37	37
38	38
39	39
40	40
41	41
42	42
43	43
44	44
45	45
46	46
47	47
48	48
49	49
50	50
51	51
52	52
53	53
54	54
55	55
56	56
57	57
58	58
59	59
60	60
61	61
62	62
63	63
64	64
65	65
66	66
67	67
68	68
69	69
70	70
71	71
72	72
73	73
74	74
75	75
76	76
77	77
78	78
79	79
80	80
81	81
82	82
83	83
84	84
85	85
86	86
87	87
88	88
89	89
90	90
91	91
92	92
93	93
94	94
95	95
96	96
97	97
98	98
99	99
100	100

1	Boat Operator
2	Laborer
1	Supervisor



WENA-0.7 Photo: Looking NNE into Wenatchee Confluence State Park. Water flows from left to right.



#### Site Contact

**Washington State Parks and Recreation Commission**  
Land/Property Contact : Wenatchee Confluence State Park

Wenatchee, WA 98801  
509-664-6373

#### Nearest Address

333 Olds Station Rd  
Wenatchee, WA 98801

#### Driving Directions

TO STAGING AREA/BOAT LAUNCH at Wenatchee Confluence State Park (SA-UCR-468.8 & BL-UCR-468.8):

1. Go north on WA-281 (State Route 281 N)
2. Turn left on WA-28 (F St SW)
3. Turn left on US-2 (US-97) (1.02 miles)
4. Take ramp on the right to US-97-ALT N toward Entiat / Chelan (0.24 miles)
5. Turn left on US-97-ALT (State Highway 97A) (0.15 miles)
6. Continue on Euclid Ave (0.36 miles)
7. Turn left at Penny Rd to stay on Euclid Ave (0.05 miles)
8. Turn right on Isenhardt Ave (0.23 miles)
9. Turn right on Olds Station Rd (0.03 miles)
10. Finish at 333 Olds Station Rd, 98801, on the left

## Wenatchee Confluence State Park-West

WENA-0.8

**Position - Location:** 47° 27.475', -120° 19.799' 47° 27' 28.5", -120° 19' 47.9" 47.45792, -120.32998 Wenatchee

**Strategy Objective:** Exclusion : Keep oil out of Wenatchee Confluence State Park.

**Implementation:** Transport 300ft boom to site using workboat. Secure one end to shore at/near Point A (47.45815, -120.33033). Extend remaining boom SE and anchor at/near Point B (47.45770, -120.32965). Do not use shoreside anchoring posts to secure boom to shore. Use additional anchoring systems (as needed) to keep boom secure in water.

**Staging Area:** Remote : Stage equipment at [SA-UCR-468.8](#) Wenatchee Confluence State Park (333 Olds Station Rd, Wenatchee, WA 98801).

**Site Safety:** Slips, Trips, Falls; Water Hazard

**Field Notes:** Strategy location is part of Wenatchee Confluence State Park. Notify Washington State Parks prior to deployment; call 509-664-6373. Strategy location is shallow.

**Watercourse:** River - Wenatchee River

**Resources at Risk:** Backwater Area, Salmon Habitat, Sensitive Resources, State Park



### Recommended Equipment

4 Each	Anchoring System(s) - (anchor, lines, floats)
300 Feet	Boom - B3 (River Boom) or equivalent
300 Feet	Boom - Sorbent
1 Each	Bridle(s) - Towing (appropriately sized for boom)
1 Each	Workboat(s) - shallow-water

### Recommended Personnel

1	Boat Operator
2	Laborer
1	Supervisor



WENA-0.8 Photo: Looking ESE toward Wenatchee Confluence State Park. Photo is oriented downriver.

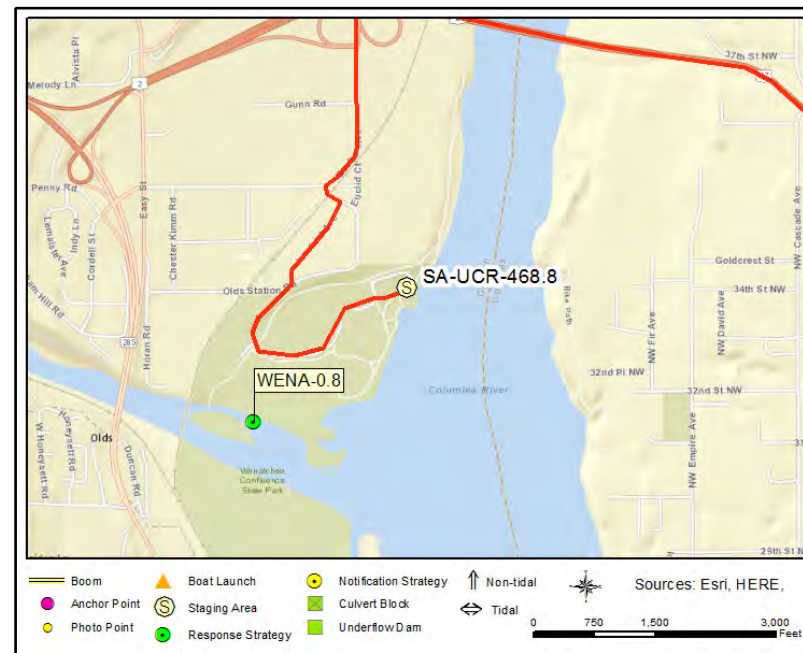
#### Site Contact

**Washington State Parks and Recreation Commission**  
Land/Property Contact : Wenatchee Confluence State Park

Wenatchee, WA 98801  
509-664-6373

#### Nearest Address

333 Olds Station Rd  
Wenatchee, WA 98801



#### Driving Directions

TO STAGING AREA/BOAT LAUNCH at Wenatchee Confluence State Park (SA-UCR-468.8 & BL-UCR-468.8):

1. Go north on WA-281 (State Route 281 N)
2. Turn left on WA-28 (F St SW)
3. Turn left on US-2 (US-97) (1.02 miles)
4. Take ramp on the right to US-97-ALT N toward Entiat / Chelan (0.24 miles)
5. Turn left on US-97-ALT (State Highway 97A) (0.15 miles)
6. Continue on Euclid Ave (0.36 miles)
7. Turn left at Penny Rd to stay on Euclid Ave (0.05 miles)
8. Turn right on Isenhardt Ave (0.23 miles)
9. Turn right on Olds Station Rd (0.03 miles)
10. Finish at 333 Olds Station Rd, 98801, on the left

**APPENDIX 4B**  
**Notification Strategy 2-Pagers**

# NOTIFICATION STRATEGIES - LIST

UCR-453.4-N

UCR-460.4-N

## Rock Island Dam

UCR-453.4-N

**Position - Location:** 47° 20.581', -120° 5.624' 47° 20' 34.8", -120° 5' 37.5" 47.34301, -120.09374 Wenatchee

**Strategy Objective:** Notification : Notify Chelan County Public Utility District so that staff can protect the resources under their control.

**Implementation:** During Normal Business Hours and After Hours call CCPUD Dispatch at 509-661-4000. Inform them of any significant oil spill or potential spill that impacts or threatens the water resources of the Columbia River.

**Field Notes:** The CCPUD manages the hydroelectric dam for the benefit of the local community. The Dam staff can close the spillway and stop the flow of the oil slick on the river.

**Watercourse:** River - Above a Dam - Columbia River

**Resources at Risk:** Lock and Dam



### Communication Process and Action:

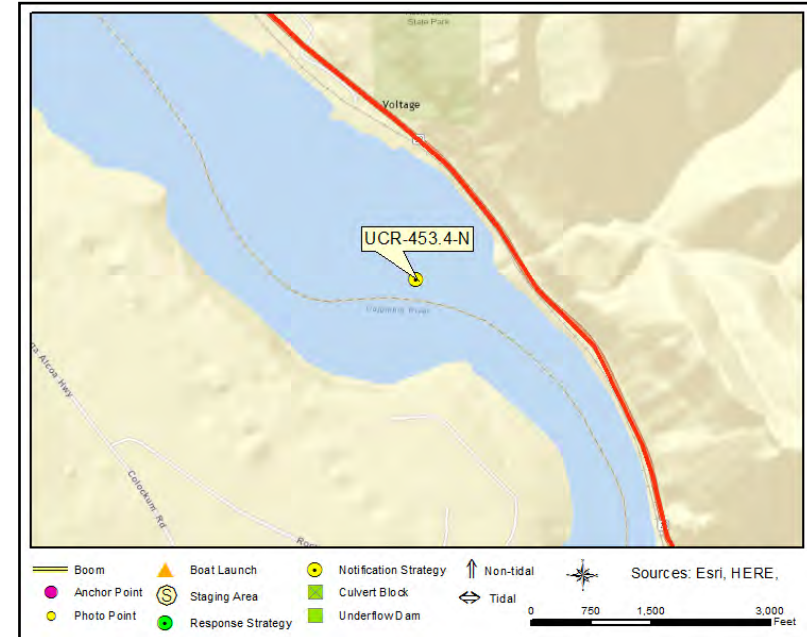
During Normal Business Hours and After Hours call CCPUD Dispatch at 509-661-4000. Inform them of any significant oil spill or potential spill that impacts or threatens the water resources of the Columbia River. Once notified, the Dam staff will determine what action(s) they need to take in order to protect the resources under their control. Actions by personnel may include closing the fish ladders and spillway.

## Rock Island Dam

UCR-453.4-N



UCR-453.4-N Photo: Aerial photo of Rock Island Dam from the right bank.



### Site Contact

#### Chelan County Public Utility District

Emergency Contact : Dispatch

Wenatchee, WA 98801

509-661-4000

### Nearest Address

327 N Wenatchee Ave  
Wenatchee, WA 98801

### Driving Directions

TO CHELAN COUNTY PUBLIC UTILITY DISTRICT OFFICE:

1. Continue on WA-281 (State Route 281 N) (10.62 miles)
2. Turn left on WA-28 (F St SW) (29.59 miles)
3. Keep left to proceed on WA-285 N toward Wenatchee (0.48 miles)
4. Bear right onto ramp toward US-2 BUSINESS / City Center (0.1 miles)
5. Bear right on S Wenatchee Ave (0.36 miles)
6. Turn left on Peachey St (Peachy St) (0.07 miles)
7. Turn right on S Mission St (WA-285) (1.08 miles)
8. Turn right on Whitman Way (0.07 miles)
9. Turn right on N Wenatchee Ave ( )
10. Finish at 327 N Wenatchee Ave, 98801, on the left

## Greater Wenatchee Irrigation District

UCR-460.4-N

**Position - Location:** 47° 22.673', -120° 13.111' 47° 22' 40.4", -120° 13' 6.6" 47.37789, -120.21851 East Wenatchee

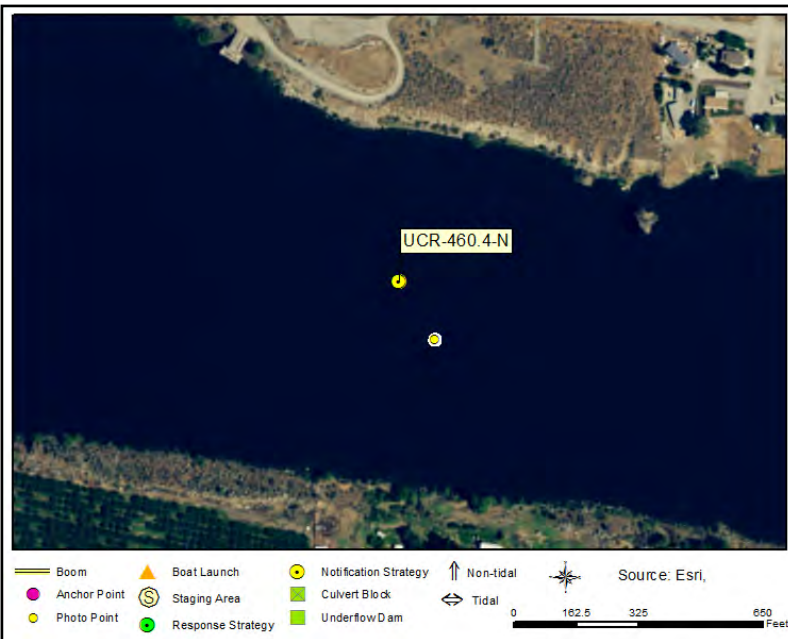
**Strategy Objective:** Notification : Notify Greater Wenatchee Irrigation District (GWID) so that staff can protect the resources under their control.

**Implementation:** During Normal Business Hours and After Hours call GWID office at 509-884-4042. Inform them of any significant oil spill or potential spill that impacts or threatens the water resources of the Columbia River.

**Field Notes:** The GWID draws irrigation water through surface water intakes in the Upper Columbia River area and beyond. The District Supervisor can shut off those water intakes.

**Watercourse:** River - Above a Dam - Columbia River

**Resources at Risk:** Water Intakes

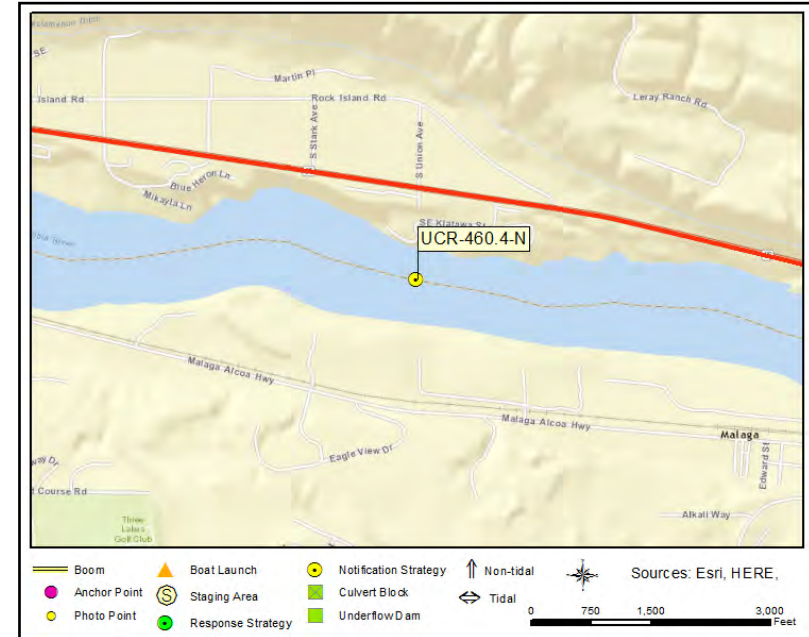


### Communication Process and Action:

During Normal Business Hours and After Hours call GWID office at 509-884-4042. Inform them of any significant oil spill or potential spill that impacts or threatens the water resources of the Columbia River. Once notified, the GWID staff will determine what action(s) they need to take in order to protect the resources under their control. Actions by the district may include shutting down intakes and closing intake valves.



UCR-460.4-N Photo: Aerial photo of left bank of Columbia River.



## Site Contact

### Greater Wenatchee Irrigation District

Primary Contact : Manager

East Wenatchee, WA 98802  
509-884-4042

## Nearest Address

3300 8th St SE  
East Wenatchee, WA 98802

## Driving Directions

TO GREATER WENATCHEE IRRIGATION DISTRICT OFFICE:

1. Continue on WA-281 (State Route 281 N)
2. Turn left on WA-28 (F St SW) (26.39 miles)
3. Turn right on S Nile Ave (0.71 miles)
4. Turn right on 8th St SE (1 miles)
5. Finish at 3300 8th St SE, 98802, on the right

**APPENDIX 4C**  
**Staging Area 2-Pagers**

## STAGING AREAS - LIST

SA-UCR-448.8      SA-UCR-462.9

SA-UCR-466.3      SA-UCR-468.8

## YoYo Rock WDFW Water Access Site

SA-UCR-448.8

### Staging Area

**Position - Location:** 47° 16.880', -120° 5.570' 47° 16' 52.8", -120° 5' 34.2" 47.28134, -120.09283 Malaga

**Comments:** YoYo Rock WDFW Water Access Site is managed by the Washington Department of Fish & Wildlife. Coordinate staging with WDFW Region 2 (Wenatchee District Office); call 509-662-0452.



### GRP Response Strategies Served:

UCR-440.8b, UCR-448.8, UCR-440.8a

### Location Information

Asset	Type/Status	Amount/Number
Boat Dock(s)	No	
Boat Ramp(s)	Concrete, Solid	1 lane, 6 degree grade
Cell Phone Coverage	No	
Covered Spaces	No	
Estimated Lot Size		16,000 SqFt
Lot Cover (Primary)	Dirt/Gravel	100%
Parking - Car	Gravel	5
Parking - Trailer	Gravel	2
Power	No	
Restroom	Restroom - Vault	1
User Fee	Yes	Discover Pass
Waste Disposal	None	
Water (potable)	No	



SA-UCR-448.8 Photo: Looking south across Staging Area/Boat Launch parking lot.

#### Site Contact

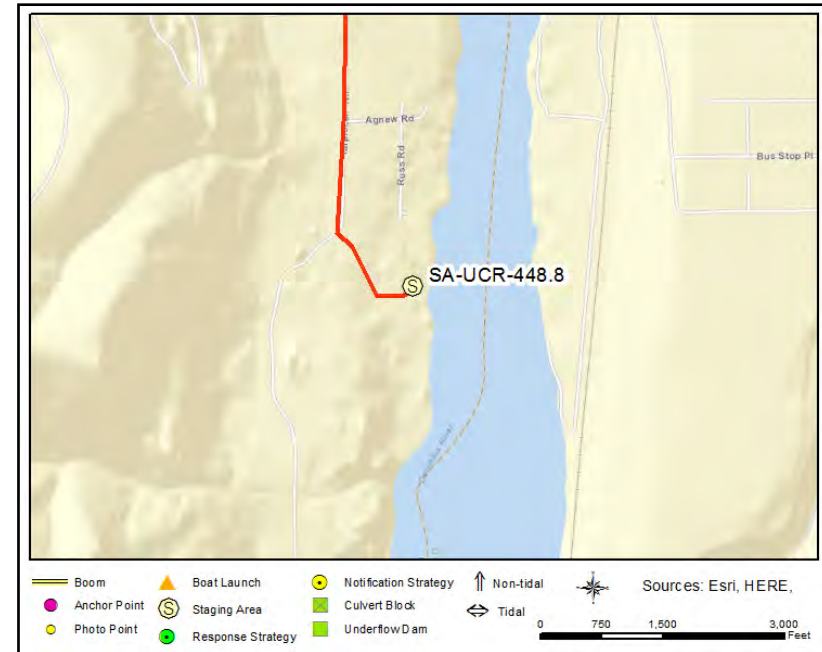
##### Washington Department of Fish & Wildlife

Land/Property Contact : Region 2 - Wenatchee District Office

Wenatchee, WA 98801  
509-662-0452

#### Nearest Address

7800 Tarpiscan Rd  
Malaga, WA 98828



#### Driving Directions

1. Start in Wenatchee
2. Bear right onto ramp toward US-2 BUSINESS / City Center (0.1 miles)
3. Make sharp left on S Wenatchee Ave (1.01 miles)
4. Continue on Malaga Alcoa Hwy (2.55 miles)
5. At fork keep left on Malaga Alcoa Hwy (Malaga Hwy) (7.65 miles)
6. Continue on Colockum Rd (2.84 miles)
7. Bear left on Tarpiscan Rd (0.67 miles)
8. Turn right to stay on Tarpiscan Rd (0.75 miles)
9. Finish at 7800 Tarpiscan Rd, 98828, on the right

## Kirby Billingsley Hydro Park

SA-UCR-462.9

### Staging Area

**Position - Location:** 47° 23.260', -120° 15.974' 47° 23' 15.6", -120° 15' 58.5" 47.38767, -120.26624 East Wenatchee

**Comments:** Kirby Billingsley Hydro Park is managed by the Chelan County Public Utility District. Coordinate staging with Chelan P.U.D.; call 509-661 -4000.



### GRP Response Strategies Served:

UCR-462.7, UCR-458.9

### Location Information

Asset	Type/Status	Amount/Number
Boat Dock(s)	Yes	1
Boat Ramp(s)	Concrete, Solid	2 lanes, 6 degree grade
Cell Phone Coverage	Yes	3 bars/3G
Covered Spaces	No	
Estimated Lot Size		120,000 SqFt
Lot Cover (Primary)	Asphalt	100%
Parking - Car	Marked	8
Parking - Trailer	Marked	30
Power	No	
Restroom	Restroom - Flush	2
User Fee	No	
Waste Disposal	Trash Receptacle	
Water (potable)	Yes	

## Kirby Billingsley Hydro Park

SA-UCR-462.9



SA-UCR-462.9 Photo: Looking SE toward boat ramp and dock.  
Photo is oriented downriver.

### Site Contact

#### Chelan County Public Utility District

Land/Property Contact : Dispatch  
509-661-4000

#### Chelan County Public Utilities District

Land/Property Owner : Main Office  
509-663-8121

### Nearest Address

1430 WA-28 S  
East Wenatchee, WA 98802



### Driving Directions

1. Start at I 90 George
2. Go on I-90 E toward 149 (0.13 miles)
3. At exit 149 take ramp on the right to WA-281 N toward Quincy / Wenatchee (0.23 miles)
4. Turn left on WA-281 (State Route 281 N) toward Quincy / Wenatchee (10.62 miles)
5. Turn left on WA-28 (F St SW) (27.72 miles)
6. Finish at 1430 WA-28 S, 98802, on the left

## Wenatchee Riverfront Park

SA-UCR-466.3

### Staging Area

**Position - Location:** 47° 25.530', -120° 18.364' 47° 25' 31.8", -120° 18' 21.9" 47.42550, -120.30607 Wenatchee

**Comments:** Wenatchee Confluence State Park is managed by the Chelan County Public Utility District. Coordinate staging with Chelan P.U.D.; call 509-661-4000.



### GRP Response Strategies Served:

[UCR-466.9](#), [UCR-466.8](#), [UCR-467.8b](#), [UCR-467.6](#), [UCR-468.3](#)

### Location Information

Asset	Type/Status	Amount/Number
Boat Dock(s)	Yes	1
Boat Ramp(s)	Concrete, Solid	2 lanes, 6 degree grade
Cell Phone Coverage	Unknown	
Covered Spaces	No	
Estimated Lot Size		75,000 SqFt
Lot Cover (Primary)	Asphalt	80%
Parking - Car	Marked	15
Parking - Trailer	Marked	20
Power	Yes	200v
Restroom	Restroom - Flush	2
User Fee	No	
User Fee	Unknown	
Water (potable)	Yes	

## Wenatchee Riverfront Park

SA-UCR-466.3



SA-UCR-466.3 Photo: Looking SSW from top of boat ramp toward end of boat dock.



### Site Contact

**Chelan County Public Utility District**  
Land/Property Contact : Dispatch

Wenatchee, WA 98801  
509-661-4000

### Nearest Address

3 N Worthen St  
Wenatchee, WA 98801

### Driving Directions

TO STAGING AREA/BOAT LAUNCH at Wenatchee Riverfront Park (SA-UCR-466.3 & BL-UCR-466.3):

1. Go north on WA-281 (State Route 281)
2. Turn right on WA-28 (F St SW) (29.59 miles)
3. Keep left to proceed on WA-285 N toward Wenatchee (0.48 miles)
4. Bear right onto ramp toward US-2 BUSINESS / City Center (0.1 miles)
5. Bear right on S Wenatchee Ave (0.36 miles)
6. Turn left on Peachey St (Peachy St) (0.07 miles)
7. Turn right on S Mission St (WA-285) (0.63 miles)
8. Turn right on Orondo Ave (0.23 miles)
9. Finish at 3 N Worthen St, 98801, on the right
10. Turn right into park and follow road to boat launch behind Pybus Public Market

## Wenatchee Confluence State Park

SA-UCR-468.8

### Staging Area

**Position - Location:** 47° 27.748', -120° 19.303' 47° 27' 44.9", -120° 19' 18.2" 47.46246, -120.32172 Wenatchee

**Comments:** Wenatchee Confluence State Park is managed by the Washington State Parks and Recreation Commission. Coordinate staging with the commission; call 509-664-6373.



### GRP Response Strategies Served:

WENA-0.8, WENA-0.7, UCR-472.8, UCR-468.6

### Location Information

Asset	Type/Status	Amount/Number
Boat Dock(s)	Yes	1
Boat Ramp(s)	Concrete, Solid	2 lanes, 6 degree grade
Cell Phone Coverage	Yes	2 bars/3G
Covered Spaces	No	
Estimated Lot Size		120,000 SqFt
Lot Cover (Primary)	Asphalt	
Parking - Car	Marked	30
Parking - Trailer	Marked	60
Power	No	
Restroom	Restroom - Flush	4
User Fee	Yes	Discover Pass
Waste Disposal	Trash Receptacle	
Water (potable)	Yes	



SA-UCR-468.8 Photo: Looking SE down boat ramps and dock. Water flows from left to right.

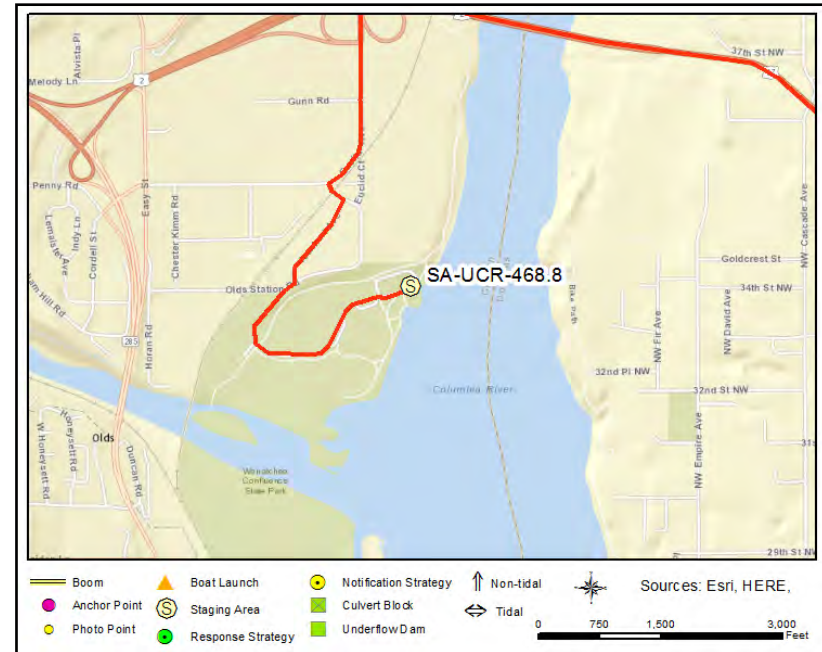
## Site Contact

**Washington State Parks and Recreation Commission**  
Land/Property Contact : Wenatchee Confluence State Park

Wenatchee, WA 98801  
509-664-6373

## Nearest Address

333 Olds Station Rd  
Wenatchee, WA 98801



## Driving Directions

1. Go north on WA-281 (State Route 281 N)
2. Turn left on WA-28 (F St SW)
3. Turn left on US-2 (US-97) (1.02 miles)
4. Take ramp on the right to US-97-ALT N toward Entiat / Chelan (0.24 miles)
5. Turn left on US-97-ALT (State Highway 97A) (0.15 miles)
6. Continue on Euclid Ave (0.36 miles)
7. Turn left at Penny Rd to stay on Euclid Ave (0.05 miles)
8. Turn right on Isenhardt Ave (0.23 miles)
9. Turn right on Olds Station Rd (0.03 miles)
10. Finish at 333 Olds Station Rd, 98801, on the left

**APPENDIX 4D**  
**Boat Launch 2-Pagers**

# BOAT LAUNCHES - LIST

[BL-UCR-448.8](#)      [BL-UCR-462.9](#)

[BL-UCR-466.3](#)      [BL-UCR-468.8](#)

## YoYo Rock WDFW Water Access Site

BL-UCR-448.8

### Boat Launch Location

**Position - Location:** 47° 16.880', -120° 5.570' 47° 16' 52.8", -120° 5' 34.2" 47.28134, -120.09283 Malaga

**Comments:** YoYo Rock WDFW Water Access Site is managed by the Washington Department of Fish & Wildlife. Coordinate staging with WDFW Region 2 (Wenatchee District Office); call 509-662-0452.



### GRP Response Strategies Served:

[UCR-440.8b](#), [UCR-448.8](#), [UCR-440.8a](#)

### Location Information

Asset	Type/Status	Amount/Number
Boat Dock(s)	No	
Boat Ramp(s)	Concrete, Solid	1 lane, 6 degree grade
Cell Phone Coverage	No	
Covered Spaces	No	
Estimated Lot Size		16,000 SqFt
Lot Cover (Primary)	Dirt/Gravel	100%
Parking - Car	Gravel	5
Parking - Trailer	Gravel	2
Power	No	
Restroom	Restroom - Vault	1
User Fee	Yes	Discover Pass
Waste Disposal	None	
Water (potable)	No	



SA-UCR-448.8 Photo: Looking south across Staging Area/Boat Launch parking lot.

#### Site Contact

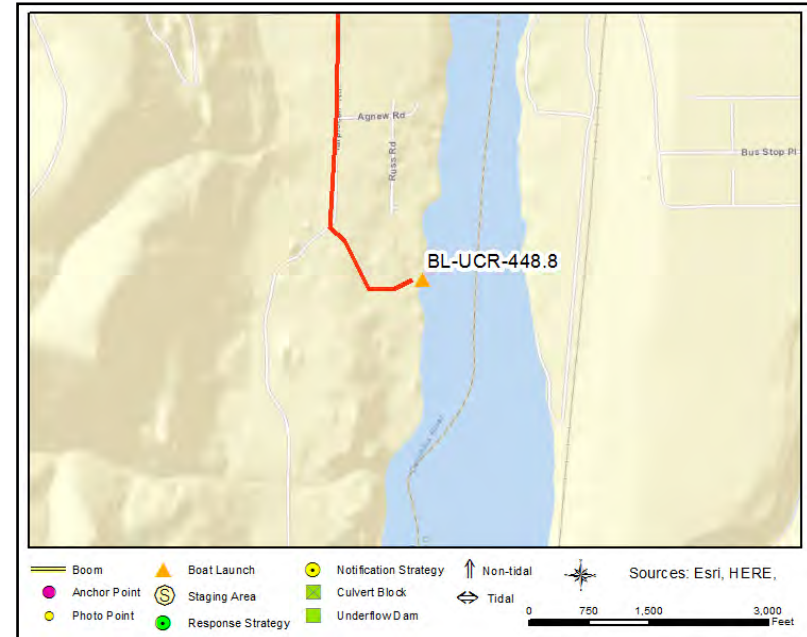
##### Washington Department of Fish & Wildlife

Land/Property Contact : Region 2 - Wenatchee District Office

Wenatchee, WA 98801  
509-662-0452

#### Nearest Address

7800 Tarpiscan Rd  
Malaga, WA 98828



#### Driving Directions

1. Start in Wenatchee
2. Bear right onto ramp toward US-2 BUSINESS / City Center (0.1 miles)
3. Make sharp left on S Wenatchee Ave (1.01 miles)
4. Continue on Malaga Alcoa Hwy (2.55 miles)
5. At fork keep left on Malaga Alcoa Hwy (Malaga Hwy) (7.65 miles)
6. Continue on Colockum Rd (2.84 miles)
7. Bear left on Tarpiscan Rd (0.67 miles)
8. Turn right to stay on Tarpiscan Rd (0.75 miles)
9. Finish at 7800 Tarpiscan Rd, 98828, on the right

# Kirby Billingsley Hydro Park

BL-UCR-462.9

## Boat Launch Location

**Position - Location:** 47° 23.260', -120° 15.974' 47° 23' 15.6", -120° 15' 58.5" 47.38767, -120.26624 East Wenatchee

**Comments:** Kirby Billingsley Hydro Park is managed by the Chelan County Public Utility District. Coordinate staging with Chelan P.U.D.; call 509-661-4000.



## GRP Response Strategies Served:

UCR-462.7, UCR-458.9

## Location Information

Asset	Type/Status	Amount/Number
Boat Dock(s)	Yes	1
Boat Ramp(s)	Concrete, Solid	2 lanes, 6 degree grade
Cell Phone Coverage	Yes	3 bars/3G
Covered Spaces	No	
Estimated Lot Size		120,000 SqFt
Lot Cover (Primary)	Asphalt	100%
Parking - Car	Marked	8
Parking - Trailer	Marked	30
Power	No	
Restroom	Restroom - Flush	2
User Fee	No	
Waste Disposal	Trash Receptacle	
Water (potable)	Yes	

# Kirby Billingsley Hydro Park

BL-UCR-462.9



SA-UCR-462.9 Photo: Looking SE toward boat ramp and dock.  
Photo is oriented downriver.

## Site Contact

### Chelan County Public Utility District

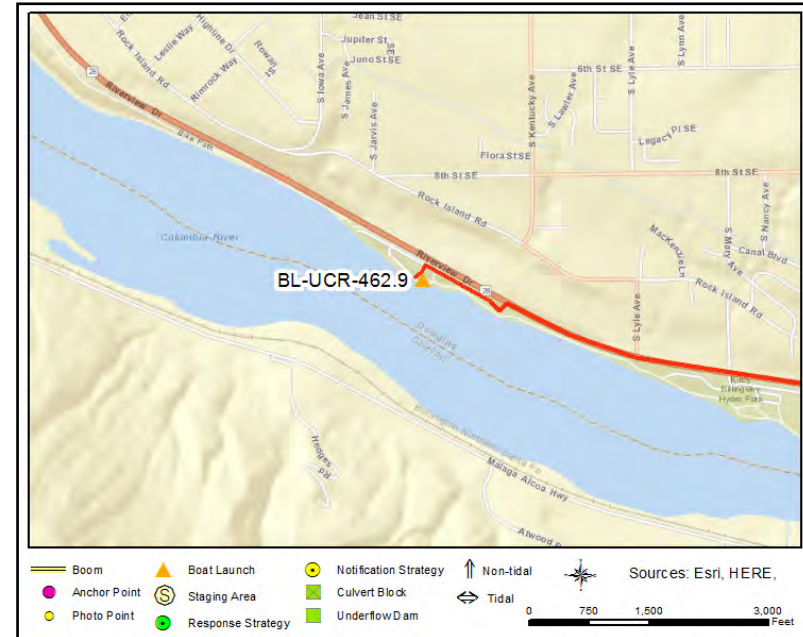
Land/Property Contact : Dispatch  
509-661-4000

### Chelan County Public Utilities District

Land/Property Owner : Main Office  
509-663-8121

## Nearest Address

1430 WA-28 S  
East Wenatchee, WA 98802



## Driving Directions

1. Start at I 90 George
2. Go on I-90 E toward 149 (0.13 miles)
3. At exit 149 take ramp on the right to WA-281 N toward Quincy / Wenatchee (0.23 miles)
4. Turn left on WA-281 (State Route 281 N) toward Quincy / Wenatchee (10.62 miles)
5. Turn left on WA-28 (F St SW) (27.72 miles)
6. Finish at 1430 WA-28 S, 98802, on the left

## Wenatchee Riverfront Park

BL-UCR-466.3

### Boat Launch Location

**Position - Location:** 47° 25.530', -120° 18.364' 47° 25' 31.8", -120° 18' 21.9" 47.42550, -120.30607 Wenatchee

**Comments:** Wenatchee Confluence State Park is managed by the Chelan County Public Utility District. Coordinate staging with Chelan P.U.D.; call 509-661-4000.



### GRP Response Strategies Served:

UCR-466.9, UCR-466.8, UCR-467.8b, UCR-467.6, UCR-468.3

### Location Information

Asset	Type/Status	Amount/Number
Boat Dock(s)	Yes	1
Boat Ramp(s)	Concrete, Solid	2 lanes, 6 degree grade
Cell Phone Coverage	Unknown	
Covered Spaces	No	
Estimated Lot Size		75,000 SqFt
Lot Cover (Primary)	Asphalt	80%
Parking - Car	Marked	15
Parking - Trailer	Marked	20
Power	Yes	200v
Restroom	Restroom - Flush	2
User Fee	No	
User Fee	Unknown	
Water (potable)	Yes	

## Wenatchee Riverfront Park

BL-UCR-466.3



SA-UCR-466.3 Photo: Looking SSW from top of boat ramp toward end of boat dock.

### Site Contact

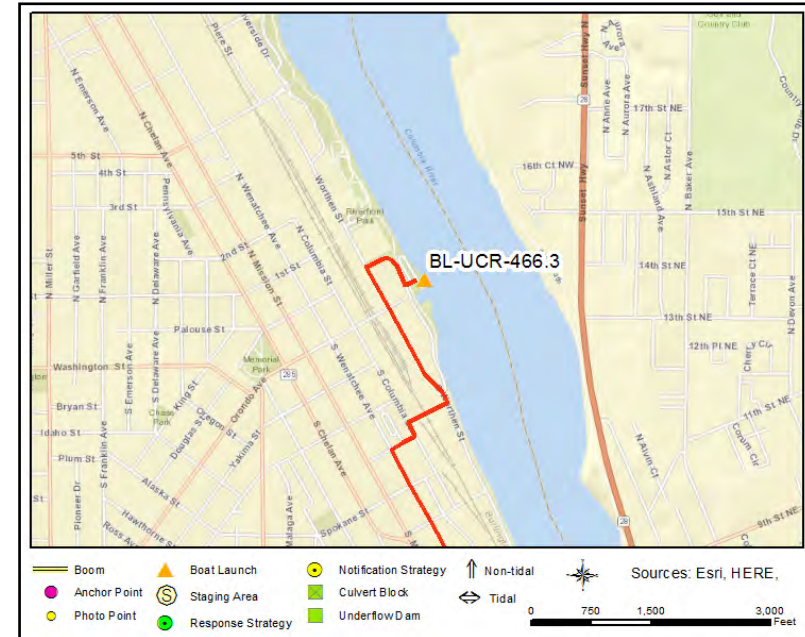
#### Chelan County Public Utility District

Land/Property Contact : Dispatch

Wenatchee, WA 98801  
509-661-4000

### Nearest Address

3 N Worthen St  
Wenatchee, WA 98801



### Driving Directions

TO STAGING AREA/BOAT LAUNCH at Wenatchee Riverfront Park (SA-UCR-466.3 & BL-UCR-466.3):

1. Go north on WA-281 (State Route 281 N)
2. Turn right on WA-28 (F St SW) (29.59 miles)
3. Keep left to proceed on WA-285 N toward Wenatchee (0.48 miles)
4. Bear right onto ramp toward US-2 BUSINESS / City Center (0.1 miles)
5. Bear right on S Wenatchee Ave (0.36 miles)
6. Turn left on Peachey St (Peachy St) (0.07 miles)
7. Turn right on S Mission St (WA-285) (0.63 miles)
8. Turn right on Orondo Ave (0.23 miles)
9. Finish at 3 N Worthen St, 98801, on the right
10. Turn right into park and follow road to boat launch behind Pybus Public Market

# Wenatchee Confluence State Park

BL-UCR-468.8

## Boat Launch Location

**Position - Location:** 47° 27.748', -120° 19.303' 47° 27' 44.9", -120° 19' 18.2" 47.46246, -120.32172 Wenatchee

**Comments:** Wenatchee Confluence State Park is managed by the Washington State Parks and Recreation Commission. Coordinate staging with the commission; call 509-664-6373.



## Location Information

Asset	Type/Status	Amount/Number
Boat Dock(s)	Yes	1
Boat Ramp(s)	Concrete, Solid	2 lanes, 6 degree grade
Cell Phone Coverage	Yes	2 bars/3G
Covered Spaces	No	
Estimated Lot Size		120,000 SqFt
Lot Cover (Primary)	Asphalt	
Parking - Car	Marked	30
Parking - Trailer	Marked	60
Power	No	
Restroom	Restroom - Flush	4
User Fee	Yes	Discover Pass
Waste Disposal	Trash Receptacle	
Water (potable)	Yes	

## GRP Response Strategies Served:

WENA-0.8, WENA-0.7, UCR-472.8, UCR-468.6



SA-UCR-468.8 Photo: Looking SE down boat ramps and dock. Water flows from left to right.

## Site Contact

**Washington State Parks and Recreation Commission**  
Land/Property Contact : Wenatchee Confluence State Park

Wenatchee, WA 98801  
509-664-6373

## Nearest Address

333 Olds Station Rd  
Wenatchee, WA 98801



## Driving Directions

1. Go north on WA-281 (State Route 281 N)
2. Turn left on WA-28 (F St SW)
3. Turn left on US-2 (US-97) (1.02 miles)
4. Take ramp on the right to US-97-ALT N toward Entiat / Chelan (0.24 miles)
5. Turn left on US-97-ALT (State Highway 97A) (0.15 miles)
6. Continue on Euclid Ave (0.36 miles)
7. Turn left at Penny Rd to stay on Euclid Ave (0.05 miles)
8. Turn right on Isenhardt Ave (0.23 miles)
9. Turn right on Olds Station Rd (0.03 miles)
10. Finish at 333 Olds Station Rd, 98801, on the left