

LAKE CHELAN
Geographic Response Plan
(LKCH-GRP)

Response Strategies and Priorities

July 2023

Before you print this document

This section and its appendices are provided in “landscape” page orientation. The detailed 2-page information sheets for response strategies, notification strategies, staging areas, and boat launch locations in the appendices have been designed for duplex printing (front and back side of paper), “open to top” configuration.

INTRODUCTION

This section provides information on GRP response strategies and the order they should be implemented, based on Potential Oil Spill Origin Points (POSOPs) and the proximity and relative priority of sensitive resources near those point locations. Area maps, sector maps, and information on staging areas and boat launch locations are also provided in this section. During a spill incident, GRP response strategies should be implemented as soon as possible. Unless circumstances unique to a particular spill situation dictate otherwise, the priority tables in Strategy and Response Priorities should be used to decide the order that GRP strategies are deployed. The downstream movement of oil and the time it takes to mobilize response resources to deploy GRP strategies must always be considered when setting implementation priorities. Information on resources at risk, sensitive areas, and flight restrictions can be found in the Resources At Risk section. Information on shoreline countermeasures can be found in the Northwest Area Shoreline Countermeasures Manual ([NWRCP Section 9420](#)). The Northwest Regional Contingency Plan (NWRCP) is available online at <http://www.rrt10nwac.com/NWACP/Default.aspx>.

These GRP strategies have been created to reduce spilled oil's impact on sensitive resources. They are not everything that should or could be done during a response to lessen the chance of injury to natural, cultural, and economic resources. Control and containment of an oil spill is always a higher priority than the implementation of response strategies. Although designed to be implemented during the initial phase of an oil spill, strategies may continue to be used throughout a response at the discretion of Unified Command with guidance provided by the Environmental Unit.

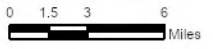
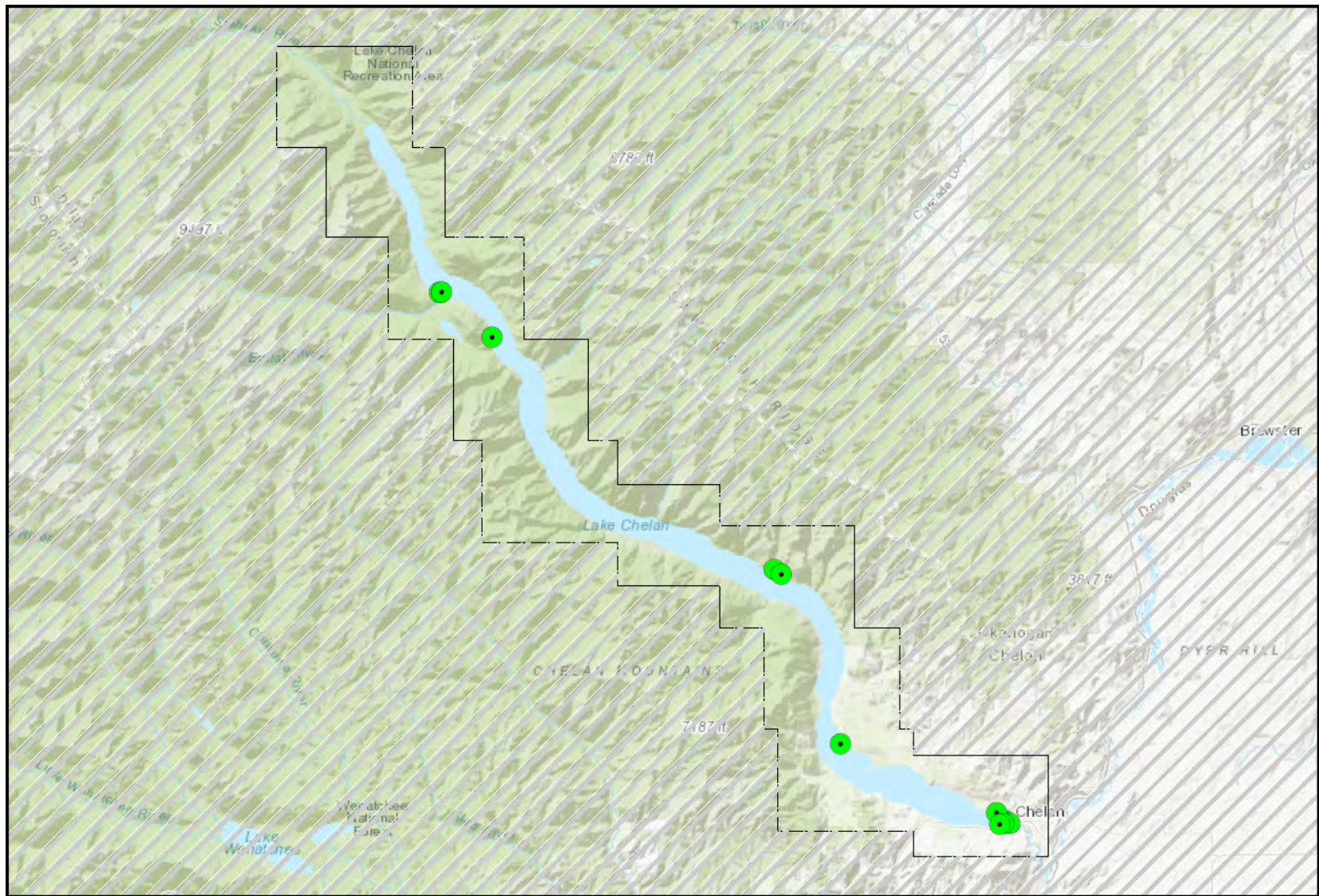
On-site Considerations

Before Deploying a GRP Strategy

Will equipment or vehicles need to be staged on or near a roadway? If so, traffic control may be required. Contact the Washington State Patrol or local, county, municipality, or tribal police for assistance. At minimum, [Washington Department of Transportation \(WSDOT\) guidelines for work zone traffic control](#) should be followed when working on or near a roadway.

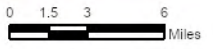
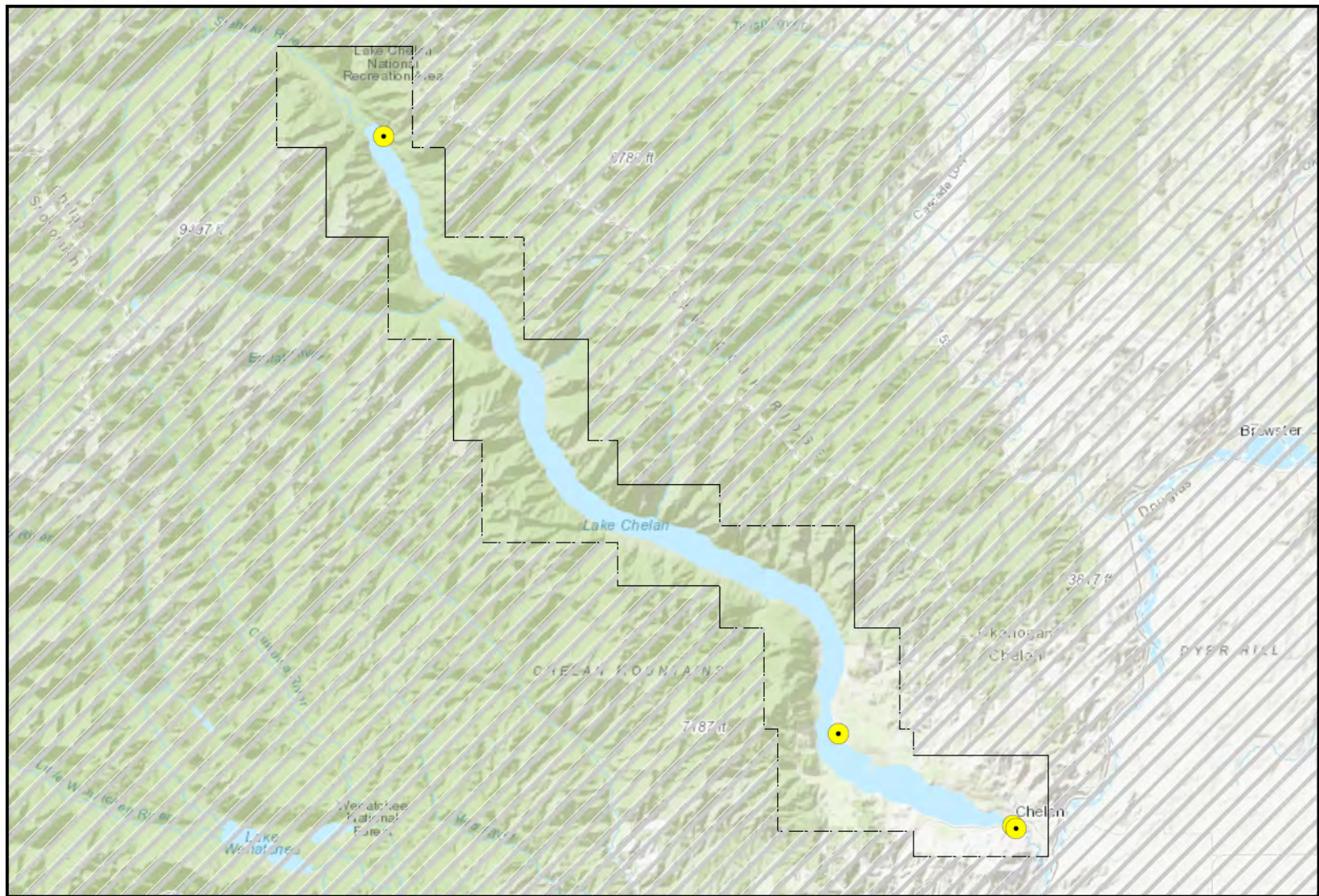
AREA OVERVIEW MAPS

The following maps provide a geographic overview of the Lake Chelan GRP planning area. Sector maps provide more detail on the location of response strategies, notification strategies, staging areas, boat launch locations, and POSOPs. Detailed information for each location can be found in the matrices or in this section's appendices. Priority tables for potential oil spill origin points can be found below.



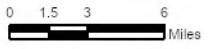
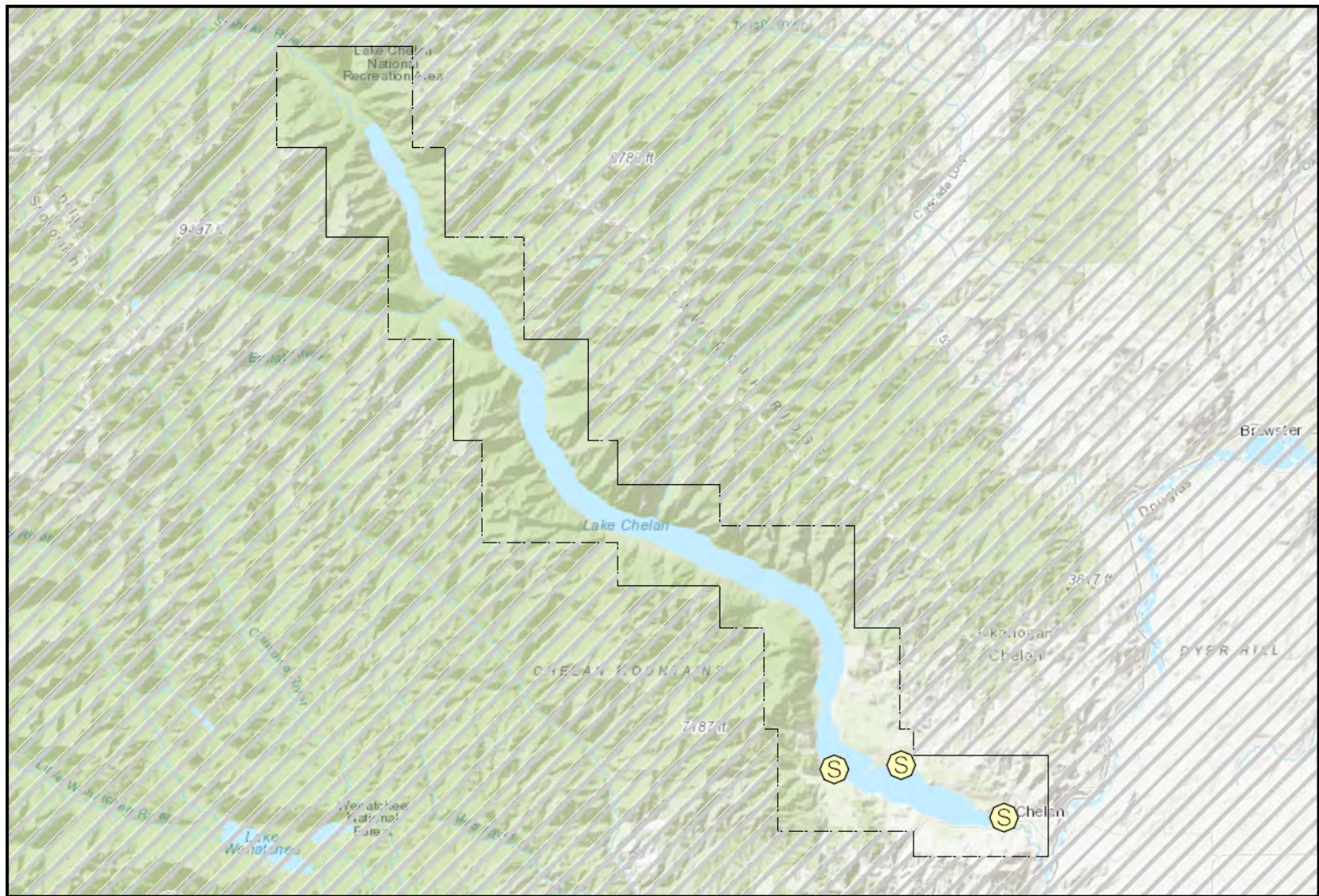
World Topographic Map: Esri Canada, Esri, HERE, Garmin, USGS, NGA, EPA, USDA, NPS

● Response Strategy Locations



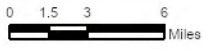
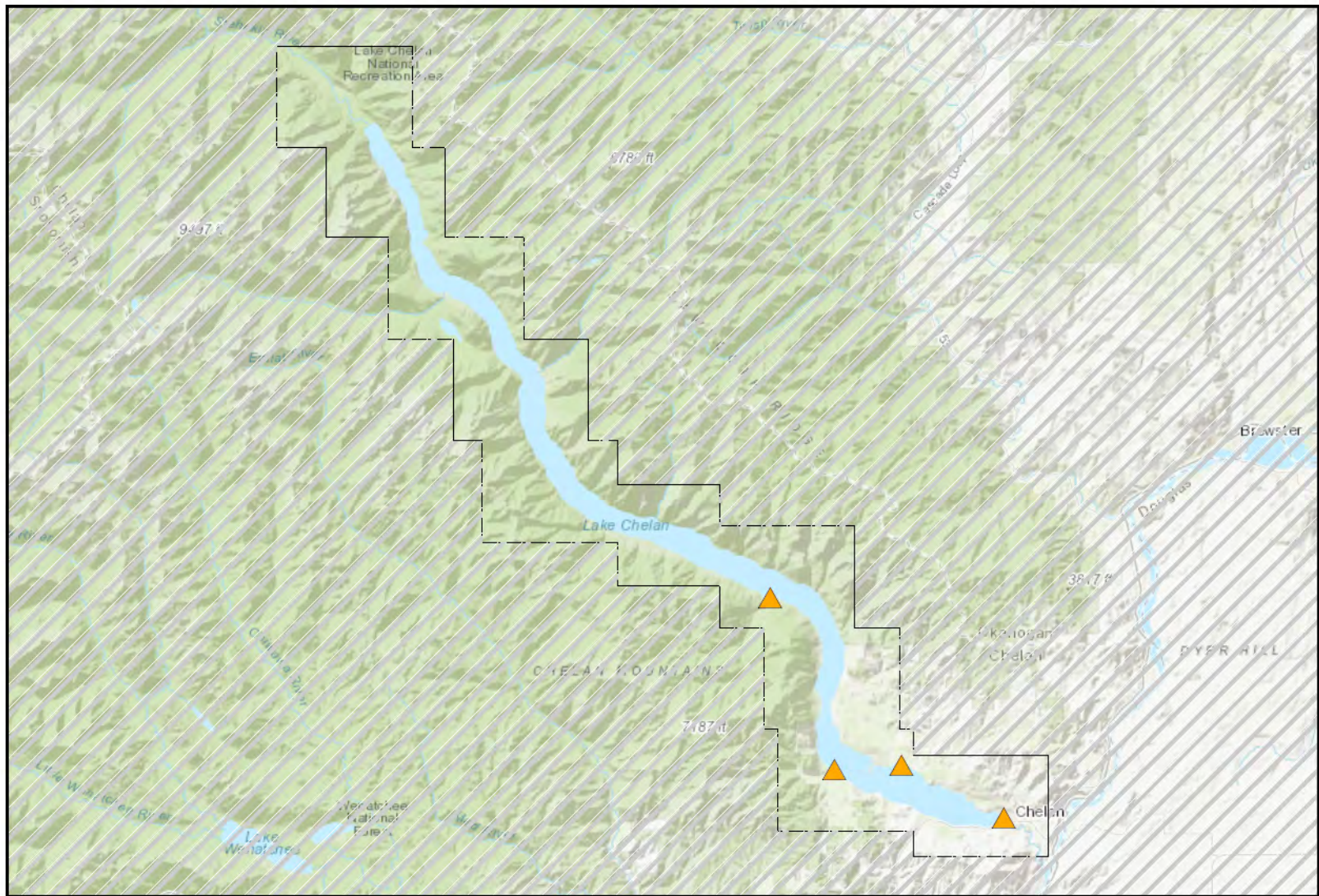
World Topographic Map: Esri Canada, Esri, HERE, Garmin, USGS, NGA, EPA, USDA, NPS

● Notification Strategy Locations



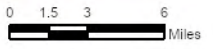
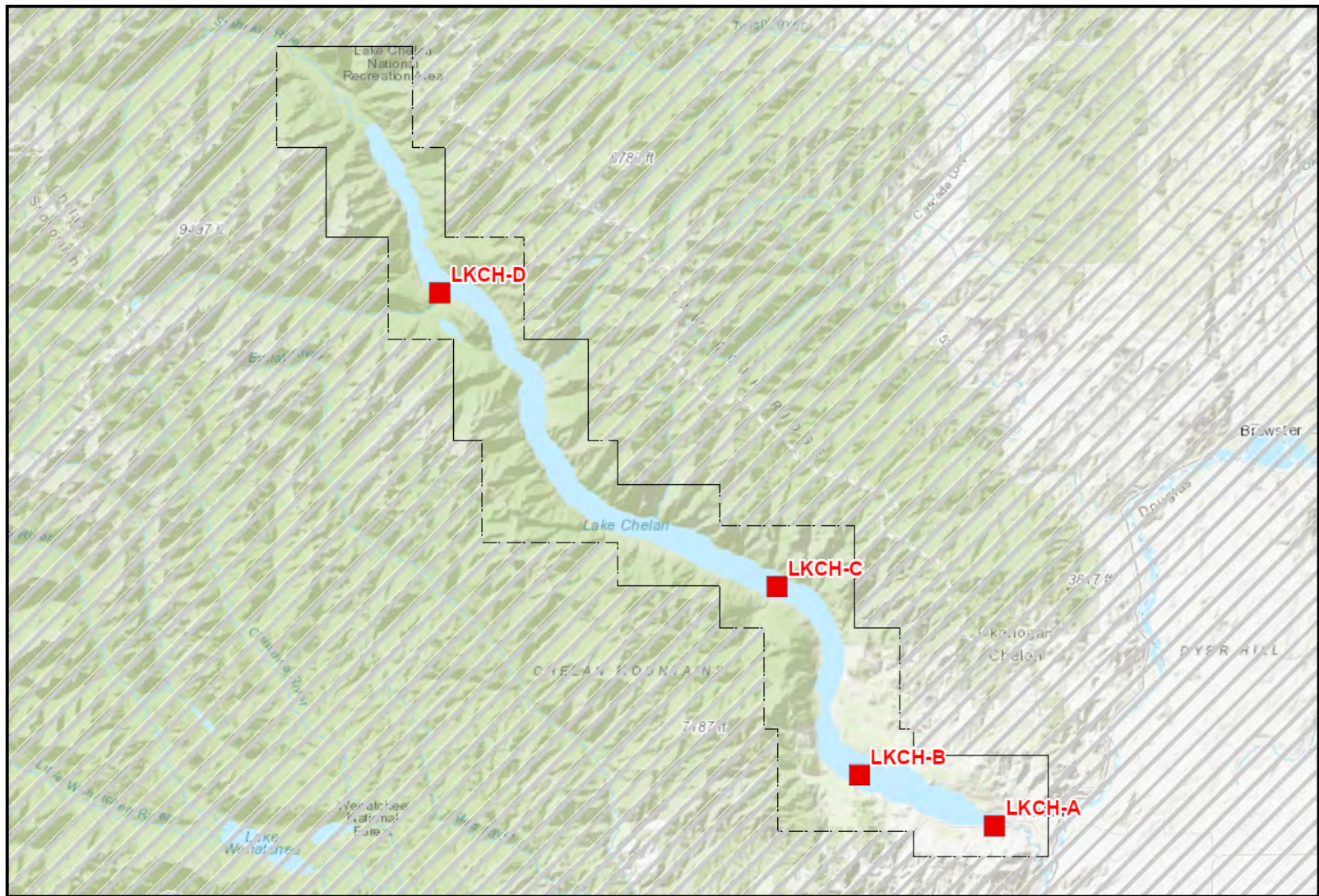
World Topographic Map: Esri Canada, Esri, HERE, Garmin, USGS, NGA, EPA, USDA, NPS

 Staging Area Locations



World Topographic Map: Esri Canada, Esri, HERE, Garmin, USGS, NGA, EPA, USDA, NPS

▲ Boat Launch Locations



World Topographic Map: Esri Canada, Esri, HERE, Garmin, USGS, NGA, EPA, USDA, NPS

■ Potential Oil Spill Locations

STRATEGY AND RESPONSE PRIORITIES

Strategy Priorities based on Potential Oil Spill Origin Points

Potential Oil Spill Origin Points (POSOPs) are geographic locations that have a defined list of response strategy implementation priorities provided in a table within this section. The placement of each POSOP is often based on spill risks in the area. Occasionally POSOPs are generalized to ensure implementation priorities are developed throughout an entire planning area.

These points are displayed on area overview and sector maps as red squares. In establishing priorities during a response, or selecting an appropriate POSOP, the downstream movement of spilled oil and the time it takes to mobilize and deploy response resources must be considered. Generally, on streams, creeks, and rivers, GRP strategies should first be implemented downstream, well beyond the furthest extent of the spill, with deployments continuing upstream towards the spill source and in some cases slightly beyond. POSOPs are alphabetically designated.

The following tables provide the strategy implementation order for Potential Oil Spill Origin Points in this GRP: points LKCH-A through LKCH-D. The priority tables provided in this section were developed using a combination of variables, including: notification time, travel time for responders and equipment, average and seasonal flow rates, average winds, deployment time, proximity to the spill source, trustee input, the relative priority of the resources at risk, and other considerations.

Source control and containment are a higher priority than GRP strategy implementation

LKCH-A (Barge Loading Dock in Chelan)

Implementation Priority	Strategy Number	Sector Map	Strategy Details (Page #)	Comments
1	LKCH-60.6	LKCH-1	43	
2	LKCH-58.9	LKCH-1	41	Low Lake Level Only
3	LKCH-60.8	LKCH-1	45	
4	LKCH-60.9	LKCH-1	47	
5	LKCH-61.0	LKCH-1	49	
6	LKCH-61.2	LKCH-1	51	
7	LKCH-48.0	LKCH-2	39	

LKCH-B (Manson)

Implementation Priority	Strategy Number	Sector Map	Strategy Details (Page #)	Comments
1	LKCH-48.0	LKCH-2	39	
2	LKCH-58.9	LKCH-1	41	Low Lake Level Only
3	LKCH-60.6	LKCH-1	43	
4	LKCH-37.5	LKCH-4	37	
5	LKCH-37.0	LKCH-4	35	

LKCH-C (Dutch Harbor)

Implementation Priority	Strategy Number	Sector Map	Strategy Details (Page #)	Comments
1	LKCH-37.0	LKCH-4	35	
2	LKCH-37.5	LKCH-4	37	
3	LKCH-48.0	LKCH-2	39	
4	LKCH-58.9	LKCH-1	41	Low Lake Level Only
5	LKCH-60.6	LKCH-1	43	

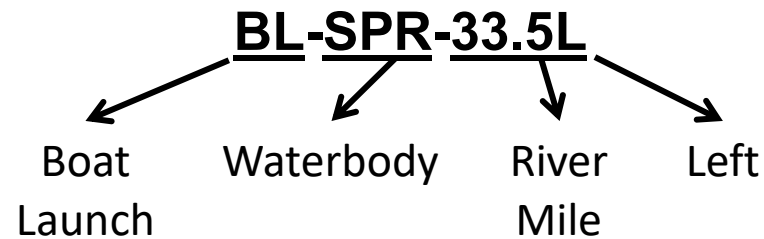
LKCH-D (Lucerne Landing)

Implementation Priority	Strategy Number	Sector Map	Strategy Details (Page #)	Comments
1	LKCH-108.4	LKCH-8	57	
2	LKCH-108.5	LKCH-8	59	
3	LKCH-108.3	LKCH-8	55	
4	LKCH-104.4	LKCH-8	53	High Lake Level Only

MATRICES

Naming Conventions (Short Names)

Each strategy, staging area, and boat launch location in this document has been given a unique “Short Name” which includes one to six letters denoting the associated waterbody. Following the letters are numbers that specify the location. On rivers or other linear waterbodies, the location is named by river mile: the distance from the mouth of the river or creek upstream to the site location. Some short names indicate whether the site is located on river right, river left, or mid-river by an “R”, “L” or “M” after the river mile. On lakes, the numbers indicate the location by shoreline mile, typically starting at the northernmost point and increasing clockwise around the lake. In marine areas, the numbers do not have a geographic meaning. Notification strategies are indicated by an “-N” at the end of the name. Staging Areas and Boat Launches are indicated by the prefix “SA” or “BL”.



Associated river body short name designations used within the plan include:

DC=Deep Creek
MHC=Marshall Creek
LSR=Little Spokane River
HMC=Hangman Creek
N = Notification Strategy

SA = Staging Area
BL = Boat Launch
L = River Left
R = River Right
M = River Middle

Response Strategy Matrices

Strategy Name	Location	Strategy Type	Boom Length	Boat Req?	Staging Area	Resources At Risk	Comments	Sector Map	Strategy Details (Page#)
LKCH-37.0	Lake Chelan (Dutch Harbor) 48.01229 -120.25733	Exclusion	Boom 700ft	Yes	Remote Coordinate with incident/unified command (or call Ecology) before staging in Old Mill Park (SA-LKCH-52.8)	Sensitive Resources	Coordinate transit to strategy location with incident/unified command or call Ecology (509-575-2490). Nearest boat ramp (lake above 1093' only) is BL-LKCH-82.6 – South across the lake. In low water use BL-LKCH-71.4 (~10 mi S).	Sector LKCH-4	35
LKCH-37.5	Lake Chelan (Dutch Harbor) 48.00900 -120.25005	Exclusion	Boom 800ft	Yes	Remote Coordinate with incident/unified command (or call Ecology) before staging in Old Mill Park (SA-LKCH-52.8)	Sensitive Resources	Coordinate transit to strategy location with incident/unified command or call Ecology (509-575-2490). Nearest boat ramp (lake above 1093' only) is BL-LKCH-82.6 – South across the lake. In low water use BL-LKCH-71.4 (~10 mi S).	Sector LKCH-4	37

Strategy Name	Location	Strategy Type	Boom Length	Boat Req?	Staging Area	Resources At Risk	Comments	Sector Map	Strategy Details (Page#)
LKCH-48.0	Lake Chelan (Willow Point Park - Manson) 47.89295 -120.19034	Exclusion	Boom 1000ft	Yes	Remote Coordinate with incident/unified command (or call Ecology) before staging in Old Mill Park (SA-LKCH-52.8)	Sensitive Resources	Coordinate with Chelan County Fire District No. 5 (Manson); call 509-663-9911 (Rivercom911 Dispatch). Boat Launch available at Old Mill Park (& low water access at Manson Bay Park via Fire Dept); call Manson Parks 509-687-9635.	Sector LKCH-2	39
LKCH-58.9	Lake Chelan (Chelan/Spaders Bay) 47.84538 -120.03182	Exclusion	Boom 1200ft	Yes	Remote Coordinate with incident/unified command (or call Ecology) before staging in Old Mill Park (SA-LKCH-52.8)	Sensitive Resources	Coordinate with Chelan Fire & Rescue via Rivercom911 Dispatch at 509-663-9911 before implementation. Notify City of Chelan Parks & Recreation at 509-682-8023 before staging equipment at Lakeshore Park.	Sector LKCH-1	41

Strategy Name	Location	Strategy Type	Boom Length	Boat Req?	Staging Area	Resources At Risk	Comments	Sector Map	Strategy Details (Page#)
LKCH-60.6	Lake Chelan (Chelan) 47.83802 -120.01837	Collection, Exclusion	Boom 700ft	Yes	Remote Coordinate with incident/unified command (or call Ecology) before staging in Old Mill Park (SA-LKCH-52.8)	Power Generation	Coordinate with Chelan Fire & Rescue via Rivercom911 Dispatch at 509-663-9911 before implementation. Notify City of Chelan Parks & Recreation at 509-682-8023 before staging equipment at Lakeshore Park.	Sector LKCH-1	43
LKCH-60.8	Lake Chelan (Chelan) 47.83972 -120.02357	Collection	Boom 300ft	Yes	Remote Coordinate with incident/unified command (or call Ecology) before staging in Old Mill Park (SA-LKCH-52.8)	Power Generation	Coordinate with Chelan Fire & Rescue via Rivercom911 Dispatch at 509-663-9911 before implementation. Notify City of Chelan Parks & Recreation at 509-682-8023 before staging equipment at Lakeshore Park.	Sector LKCH-1	45

Strategy Name	Location	Strategy Type	Boom Length	Boat Req?	Staging Area	Resources At Risk	Comments	Sector Map	Strategy Details (Page#)
LKCH-60.9	Lake Chelan (Chelan) 47.83855 -120.02410	Collection	Boom 300ft	Yes	Remote Coordinate with incident/unified command (or call Ecology) before staging in Old Mill Park (SA-LKCH-52.8)	Power Generation	Coordinate with Chelan Fire & Rescue via Rivercom911 Dispatch at 509-663-9911 before implementation. Notify City of Chelan Parks & Recreation at 509-682-8023 before staging equipment at Lakeshore Park.	Sector LKCH-1	47
LKCH-61.0	Lake Chelan (Chelan) 47.83783 -120.02498	Collection	Boom 500ft	Yes	Remote Coordinate with incident/unified command (or call Ecology) before staging in Old Mill Park (SA-LKCH-52.8)	Power Generation	Coordinate with Chelan Fire & Rescue via Rivercom911 Dispatch at 509-663-9911 before implementation. Notify City of Chelan Parks & Recreation at 509-682-8023 before staging equipment at Lakeshore Park.	Sector LKCH-1	49

Strategy Name	Location	Strategy Type	Boom Length	Boat Req?	Staging Area	Resources At Risk	Comments	Sector Map	Strategy Details (Page#)
LKCH-61.2	Lake Chelan (Chelan) 47.83735 -120.02880	Collection	Boom 300ft	Yes	Remote Coordinate with incident/unified command (or call Ecology) before staging in Old Mill Park (SA-LKCH-52.8)	Power Generation	Coordinate with Chelan Fire & Rescue via Rivercom911 Dispatch at 509-663-9911 before implementation. Notify City of Chelan Parks & Recreation at 509-682-8023 before staging equipment at Lakeshore Park.	Sector LKCH-1	51
LKCH-104.4	Lake Chelan 48.17123 -120.54483	Exclusion	Boom 300ft	Yes	Remote Coordinate with incident/unified command (or call Ecology) before staging in Old Mill Park (SA-LKCH-52.8)	Sensitive Resources	Coordinate transit to strategy location with incident/unified command or call Ecology (509-575-2490). Nearest boat ramp (lake above 1093' only) is BL-LKCH-82.6 (~20 mi S). In low water use BL-LKCH-71.4 (~30 mi S).	Sector LKCH-8	53

Strategy Name	Location	Strategy Type	Boom Length	Boat Req?	Staging Area	Resources At Risk	Comments	Sector Map	Strategy Details (Page#)
LKCH-108.3	Lake Chelan (Lucerne Landing) 48.20220 -120.59654	Diversion	Boom 100ft	Yes	Remote Coordinate with incident/unified command (or call Ecology) before staging in Old Mill Park (SA-LKCH-52.8)	Sensitive Resources	Coordinate transit to Lucerne Landing with incident/unified command or call Ecology (509-575-2490). Nearest boat ramp (lake above 1093' only) is BL-LKCH-82.6 (~23 mi S). In low water use BL-LKCH-71.4 (~33 mi S).	Sector LKCH-8	55
LKCH-108.4	Lake Chelan (Lucerne Landing) 48.20166 -120.59835	Containment	Boom 500ft	Yes	Remote Shoreside of dock at Lucerne Landing.	Sensitive Resources	Coordinate transit to Lucerne Landing with incident/unified command or call Ecology (509-575-2490). Nearest boat ramp (lake above 1093' only) is BL-LKCH-82.6 (~23 mi S). In low water use BL-LKCH-71.4 (~33 mi S).	Sector LKCH-8	57

Strategy Name	Location	Strategy Type	Boom Length	Boat Req?	Staging Area	Resources At Risk	Comments	Sector Map	Strategy Details (Page#)
LKCH-108.5	Lake Chelan (Lucerne Landing) 48.20191 -120.59892	Collection	Boom 800ft	Yes	Remote Coordinate with incident/unified command (or call Ecology) before staging in Old Mill Park (SA-LKCH-52.8)	Sensitive Resources	Coordinate transit to Lucerne Landing with incident/unified command or call Ecology (509-575-2490). Nearest boat ramp (lake above 1093' only) is BL-LKCH-82.6 (~23 mi S). In low water use BL-LKCH-71.4 (~33 mi S).	Sector LKCH-8	59

Notification Strategy Matrices

Strategy Name	Location	Strategy Type	Resources at Risk	Implementation	Comments	Sector Map	Strategy Details (Page#)
LKCH-2.8-N	National Park Service Stehekin Ranger Station 48.30838 -120.65643	Notification	Federal Lands, Marina, Public Recreation Site/Area, Sensitive Resources, Wetlands	Call the NPS Stehekin Ranger's Station at (509) 699-2080 x 29 (24-hr number) and WA Department of Archeology and Historic Preservation (360) 586-3065.	Notify park staff and WA State Archaeologist of oil spill so they can respond to nearby sensitive cultural resources appropriately	Sector LKCH-10	63
LKCH-47.5-N	Lake Chelan Reclamation District Water Intake 47.89977 -120.19240	Notification	Public Health and Safety, Water Intakes	Call Lake Chelan Notification District emergency line at 509-687-3548. Inform them that a spill has occurred and to consider shutting down their intakes.	Shut down drinking water and irrigation intakes.	Sector LKCH-2	65
LKCH-60.1-N	City of Chelan Drinking Water Intake 47.83634 -120.01575	Notification	Public Health and Safety, Water Intakes	Call City of Chelan Public Works at 509 679 1307 or 509 264 8300 and inform them a spill has occurred. Advise they consider shutting down their intakes.	Shut down drinking water intake and park irrigation intakes.	Sector LKCH-1	67

Strategy Name	Location	Strategy Type	Resources at Risk	Implementation	Comments	Sector Map	Strategy Details (Page#)
LKCH-60.2-N	Lake Chelan Hydroelectric Project 47.83446 -120.01246	Notification	Power Generation, Salmon Bearing Stream	Call System Operations at 509-661-4000 (staffed 24/7). They will deploy response equipment and/or adjust water intakes.	Keep oil out of dam	Sector LKCH-1	69

Staging Area Matrices

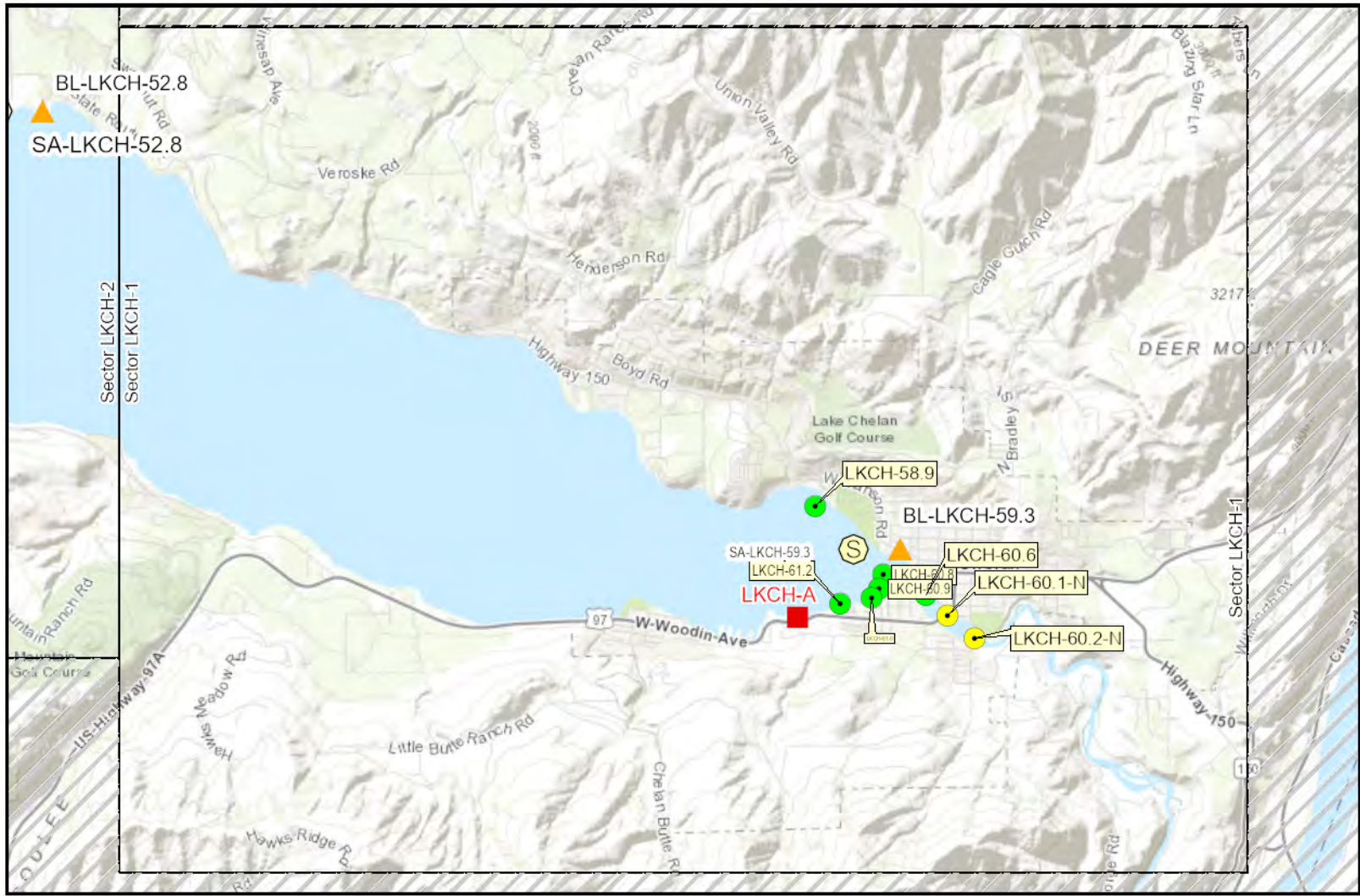
Strategy Name	Location	Position	Nearest Address	Contact	Strategies Served	Comments	Sector Map	Strategy Details (Page#)
SA-LKCH-52.8	Old Mill Park	47.87815 - 120.12860	200 Mill Rd Manson, WA 98831	Manson Parks and Recreation District Owner Manson, WA 98831 509-687-9635	LKCH-60.9, LKCH-37.5, LKCH-37.0, LKCH-48.0, LKCH-61.2, LKCH-108.4, LKCH-60.6, LKCH-108.3, LKCH-108.5, LKCH-58.9, LKCH-104.4, LKCH-60.8, LKCH-61.0	Just east of downtown Manson, this 20-acre recreation facility offers a large parking lot for boat trailers and a pump-out station.	Sector LKCH-2	73
SA-LKCH-59.3	Lakeshore Park Marina	47.84179 - 120.02438	310 W Manson Road Chelan, WA 98816	City of Chelan Parks and Recreation Owner Chelan, WA 98816 509-682-8023		Pump-out station, launch and ample pay parking. Adjacent to RV Park with utilities and wi-fi.	Sector LKCH-1	75
SA-LKCH-71.4	Lake Chelan State Park	47.87544 - 120.19691	7544 S. Lakeshore Road Chelan, WA 98816	Washington State Parks and Recreation Commission Lake Chelan State Park Chelan, WA 98816 509-687-3710		The park provides one kitchen shelter without electricity plus a small parking area.	Sector LKCH-2	77

Boat Launch Matrices

Strategy Name	Name	Position	Nearest Address	Contact	Strategies Served	Comments	Sector Map	Strategy Details (Page#)
BL-LKCH-52.8	Old Mill Park	47.87815 -120.12860	200 Mill Rd Manson, WA 98831	Manson Parks and Recreation District Owner Manson, WA 98831 509-687-9635	LKCH-48.0, LKCH-61.2, LKCH-60.9, LKCH-37.5, LKCH-60.6, LKCH-61.0, LKCH-108.5, LKCH-108.3, LKCH-60.8, LKCH-104.4, LKCH-37.0, LKCH-58.9	Just east of downtown Manson, this 20-acre recreation facility offers a large parking lot for boat trailers and a pump-out station.	Sector LKCH-2	81
BL-LKCH-59.3	Lakeshore Park Marina	47.84179 -120.02438	310 W Manson Road Chelan, WA 98816	City of Chelan Parks and Recreation Owner Chelan, WA 98816 509-682-8023		Pump-out station, launch and ample pay parking. Adjacent to RV Park with utilities and wi-fi.	Sector LKCH-1	83

Strategy Name	Name	Position	Nearest Address	Contact	Strategies Served	Comments	Sector Map	Strategy Details (Page#)
BL-LKCH-71.4	Lake Chelan State Park	47.87544 -120.19691	7544 S. Lakeshore Road Chelan, WA 98816	Manson Parks and Recreation District Owner Manson, WA 98831 509-687-9635		Accessible in low water. The park has a double lane boat launch with nearby parking for approximately 32 vehicles with trailers. The launch offers a 1080 feet of docking space along the four piers near the launch.	Sector LKCH-2	85

Strategy Name	Name	Position	Nearest Address	Contact	Strategies Served	Comments	Sector Map	Strategy Details (Page#)
BL-LKCH-82.6	25-Mile Creek Boat Launch	47.99316 -120.26120	20530 S Lakeshore Rd Chelan, WA 98816	Washington State Parks and Recreation Commission Lake Chelan State Park Chelan, WA 98816 509-687-3710	LKCH-108.4	Twenty-Five Mile Creek State Park offers two boat ramps. The launch is usable from mid-June to the end of December, if the lake elevation is 1093 ft or above. Check with Information Center 360-902-8844. There is a modern marina with moorage for 20 boats up to 23 feet long. If lake is below 1093 ft use Lake Chelan State Park (BL-LKCH-71.4).	Sector LKCH-4	87

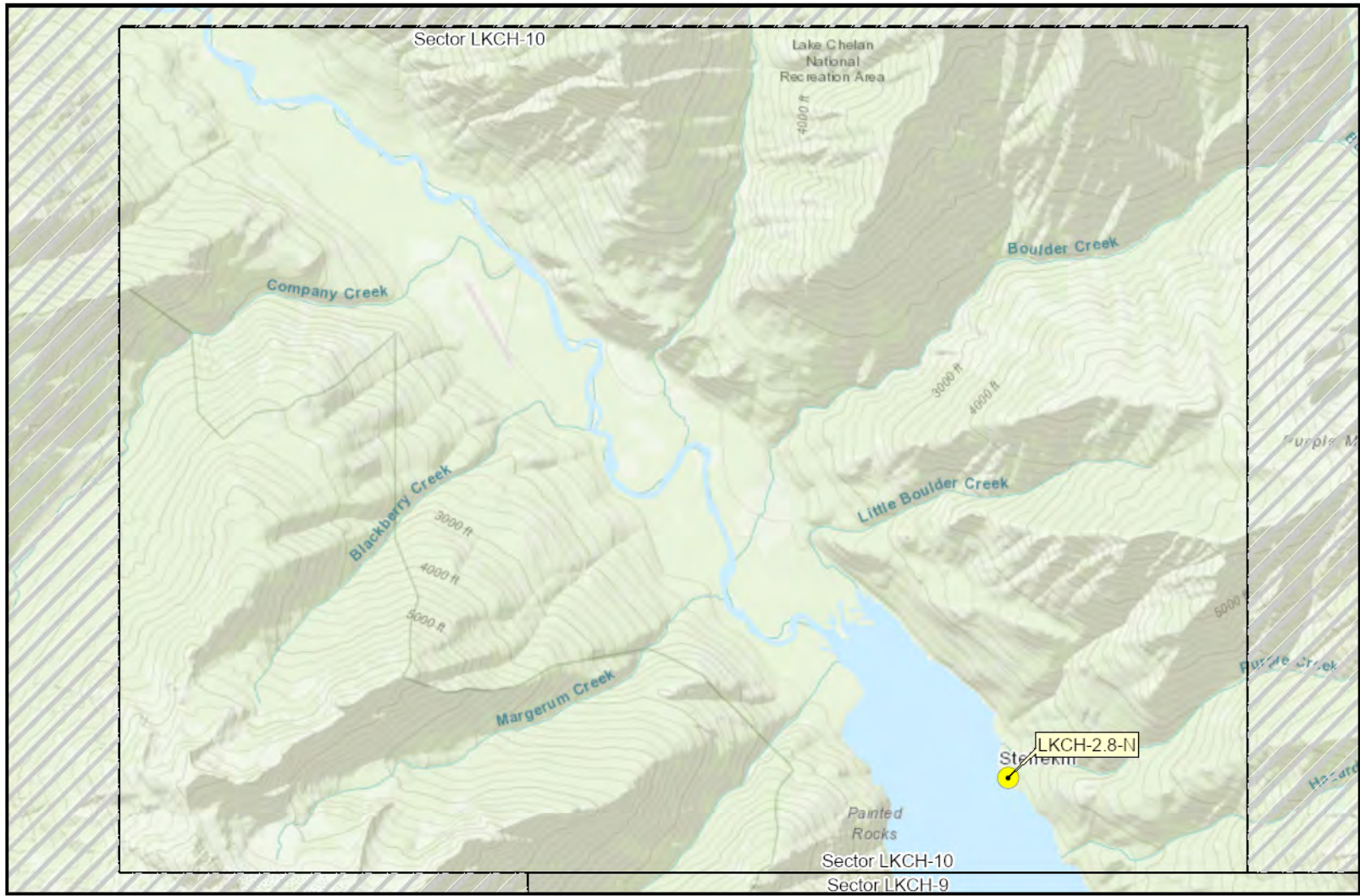


- Response Strategy Locations
- Notification Strategy Locations
- S Staging Area Locations
- ▲ Boat Launch Locations
- Potential Oil Spill Points



Sector LKCH-1

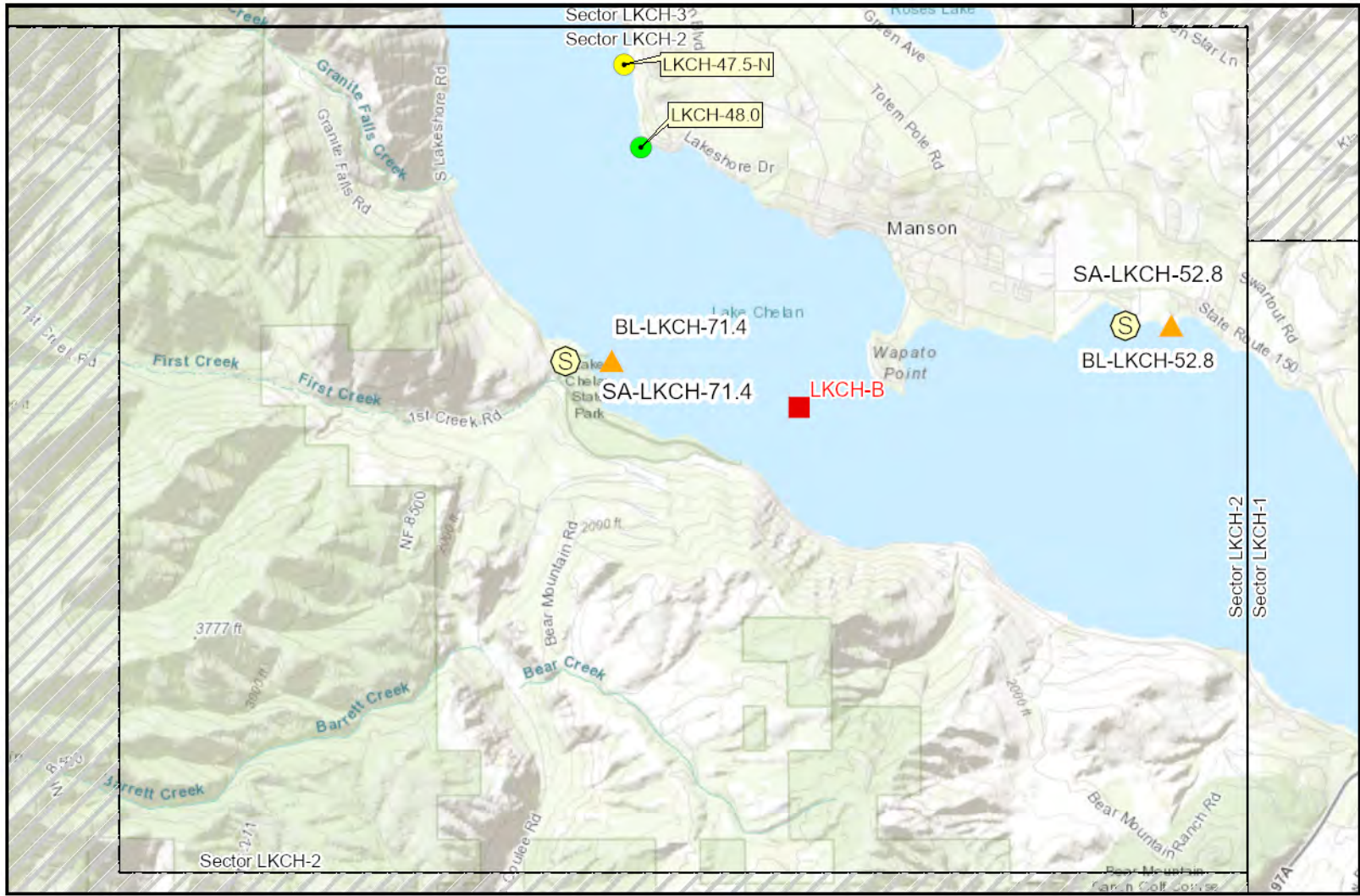
World Topographic Map: Bureau of Land Management, Esri Canada, Esri, HERE, Garmin, INCREMENT P, USGS, METI/NASA, NGA, EPA, USDA
 Staging Area and Boat Launch symbols are offset to prevent overlapping.



Sector LKCH-10

World Topographic Map: County of Skagit, Bureau of Land Management, Esri Canada, Esri, HERE, Garmin, INCREMENT P, USGS, METI/NASA, NGA, EPA, USDA
 Staging Area and Boat Launch symbols are offset to prevent overlapping.

● Notification Strategy Locations



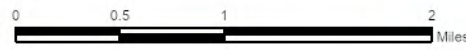
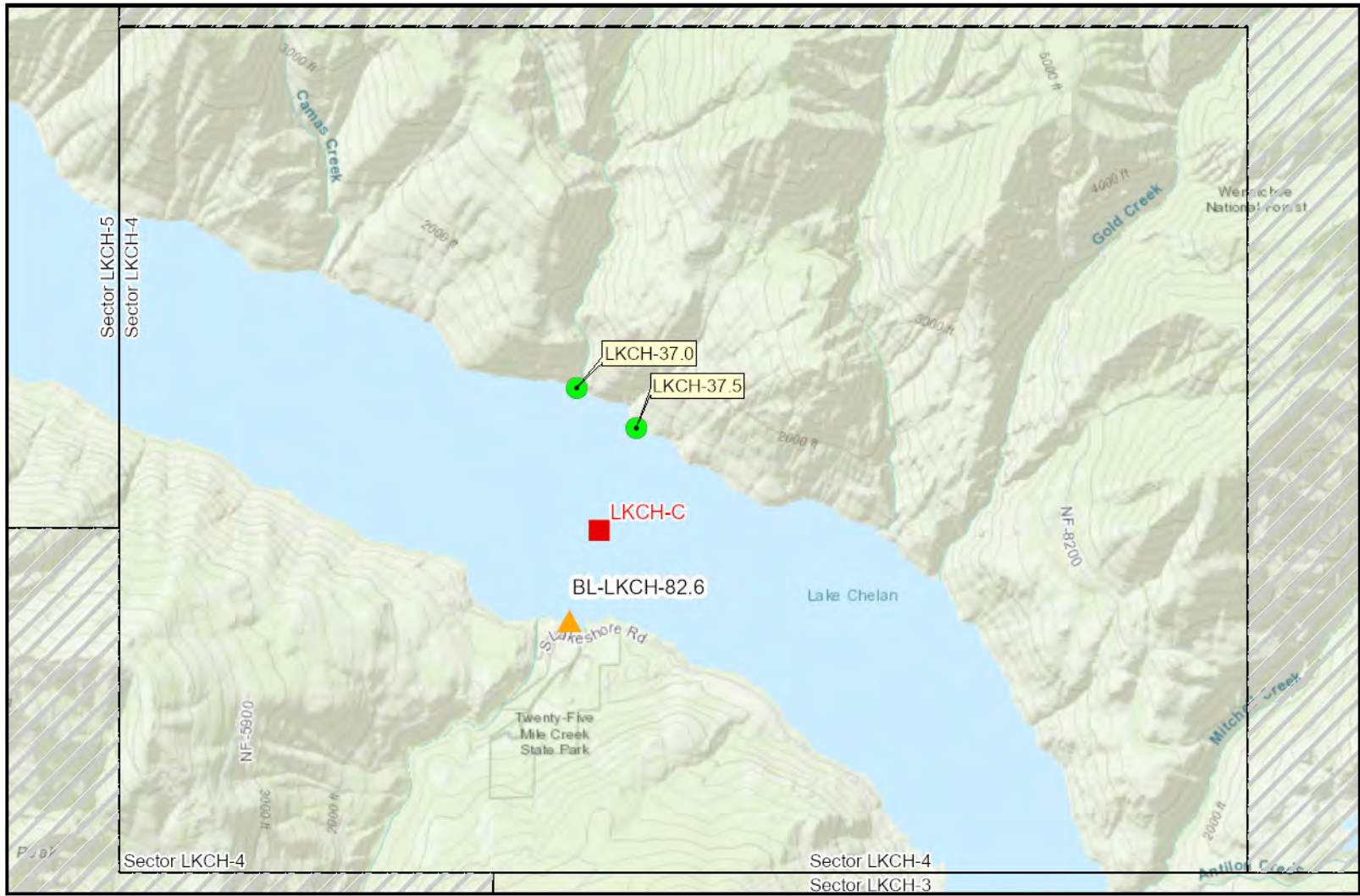
- Response Strategy Locations
- Notification Strategy Locations
- S Staging Area Locations
- ▲ Boat Launch Locations
- Potential Oil Spill Points



Sector LKCH-2

World Topographic Map: Bureau of Land Management, Esri Canada, Esri, HERE, Garmin, INCREMENT P, USGS, METI/NASA, NGA, EPA, USDA

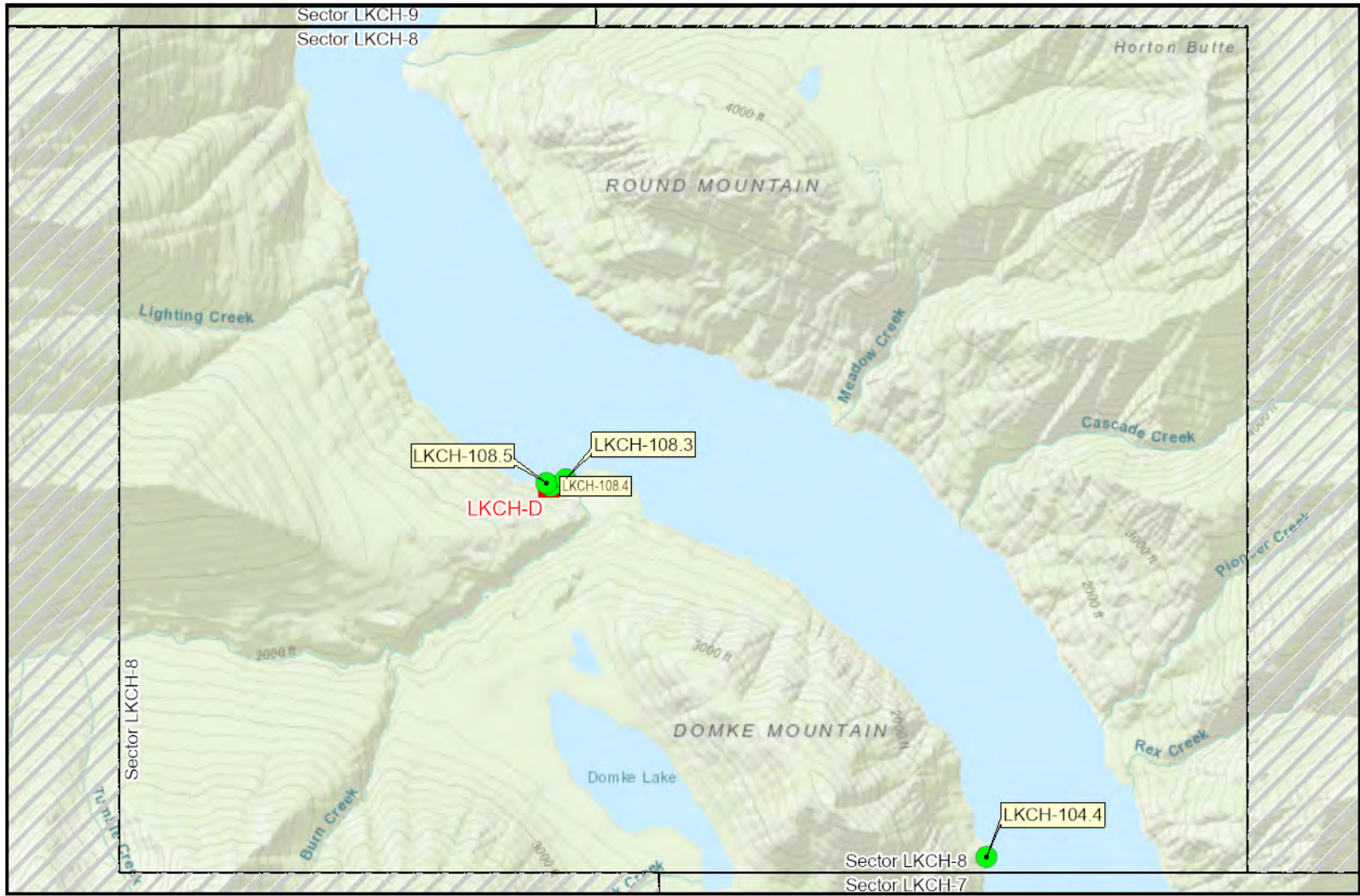
Staging Area and Boat Launch symbols are offset to prevent overlapping.



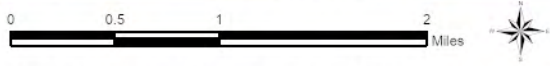
Sector LKCH-4

- Response Strategy Locations
- ▲ Boat Launch Locations
- Potential Oil Spill Points

World Topographic Map: Bureau of Land Management, Esri Canada, Esri, HERE, Garmin, INCREMENT P, USGS, METI/NASA, NGA, EPA, USDA
 Staging Area and Boat Launch symbols are offset to prevent overlapping.



- Response Strategy Locations
- Potential Oil Spill Points



Sector LKCH-8

World Topographic Map: Bureau of Land Management, Esri Canada, Esri, HERE, Garmin, INCREMENT P, USGS, METI/NASA, NGA, EPA, USDA
 Staging Area and Boat Launch symbols are offset to prevent overlapping.

APPENDIX A
Response Strategy 2-Pagers

Lake Chelan (Dutch Harbor)

LKCH-37.0

Position - Location: 48° .737', -120° 15.440' 48° 0' 44.2", -120° 15' 26.4" 48.01229, -120.25733 Manson

Strategy Objective: Exclusion : Keep oil away from shore at this location

Implementation: Using workboat, secure end of boom to shore near "A" (48.012568, -120.258706). Pull boom out away from shore to the Southeast (650ft); secure remaining boom end to shore near "B" (48.011948, -120.256291). Use additional anchoring systems to maintain the shape of the boom and to keep it secure. Use existing structures, trees, or anchor posts to secure boom to shore. Water depth at this location is very deep immediately offshore.

Staging Area: Remote: Coordinate with incident/unified command (or call Ecology) before staging in Old Mill Park (SA-LKCH-52.8)

Site Safety: Steep banks; rocky hillside; water hazard; slip, trip, fall hazards; limited or no site access

Field Notes: Coordinate transit to strategy location with incident/unified command or call Ecology (509-575-2490). Nearest boat ramp (lake above 1093' only) is BL-LKCH-82.6 – South across the lake. In low water use BL-LKCH-71.4 (~10 mi S).

Watercourse: Lake - High water June through September

Resources at Risk: Raptors, Resident Fish, Salmonids, Sensitive Resources



Recommended Equipment

6 Each	Anchoring Post(s) - (shoreside)
3 Each	Anchoring System(s) - (anchor, lines, floats)
700 Feet	Boom - B2 (Contractor Boom) or equivalent
1 Each	Bridle(s) - Towing (appropriately sized for boom)
500 Feet	Line - 3/8" poly line
1 Each	Workboat(s) - of adequate size for type and amount of boom

Recommended Personnel

1	Boat Operator
3	Laborer
1	Supervisor



LKCH-37.0 Photo: Aerial photo looking NNE at strategy location



Site Contact

Mountain Barge Services

Primary Contact :
509-682-2493

U.S. Forest Service Okanogan-Wenatchee National Forest

Land/Property Owner :
509-664-9254

Nearest Address

200 Mill Rd
Manson, WA 98831

Driving Directions

1. Starting East on US-2 E (US-97 N) toward School St (0.04 miles)
2. Turn left on School St (0.04 miles)
3. Turn right on Melody Ln (0.57 miles)
4. At the stop sign, continue forward on Ohme Garden Rd (1.01 miles)
5. At the roundabout, take the third exit onto US-97-ALT N (31.4 miles)
6. Continue forward on W Woodin Ave (US-97-ALT N) (1.78 miles)
7. Turn left at W Webster Ave to stay on W Woodin Ave (0.4 miles)
8. Turn left on N Columbia St (0.06 miles)
9. Turn left on WA-150 N (W Manson Rd) (1.09 miles)
10. At the roundabout, take the second exit onto WA-150 N (5.26 miles)
11. Finish at 200 Mill Rd, 98831, on the left

Lake Chelan (Dutch Harbor)

LKCH-37.5

Position - Location: 48° .540', -120° 15.003' 48° 0' 32.4", -120° 15' .2" 48.00900, -120.25005 Manson

Strategy Objective: Exclusion : Keep oil away from shore at this location

Implementation: Using workboat, secure end of boom to shore near "A" (48.009623, -120.250955). Pull boom out away from shore to the SE (750ft to 800ft); secure remaining boom end to shore near "C" (48.008417, -120.248527). Pull boom into desired shape anchoring near "B" (48.009077, -120.250505 – 60ft off shore, about ~225ft SSE of "A"). Use additional anchoring systems to maintain the shape of the boom and to keep it secure. Use existing structures, trees, or anchor posts to secure boom to shore. Water depth is very deep immediately offshore.

Staging Area: Remote: Coordinate with incident/unified command (or call Ecology) before staging in Old Mill Park (SA-LKCH-52.8)

Site Safety: Steep banks; rocky hillside; water hazard; slip, trip, fall hazards; limited or no site access

Field Notes: Coordinate transit to strategy location with incident/unified command or call Ecology (509-575-2490). Nearest boat ramp (lake above 1093' only) is BL-LKCH-82.6 – South across the lake. In low water use BL-LKCH-71.4 (~10 mi S).

Watercourse: Lake - High water June through September

Resources at Risk: Raptors, Resident Fish, Salmonids, Sensitive Resources



Recommended Equipment

6 Each	Anchoring Post(s) - (shoreside)
5 Each	Anchoring System(s) - (anchor, lines, floats)
800 Feet	Boom - B2 (Contractor Boom) or equivalent
1 Each	Bridle(s) - Towing (appropriately sized for boom)
500 Feet	Line - 3/8" poly line
1 Each	Workboat(s) - of adequate size for type and amount of boom

Recommended Personnel

1	Boat Operator
3	Laborer
1	Supervisor



LKCH-37.5 Photo: Aerial photo looking NE at strategy location



Site Contact

Mountain Barge Services

Primary Contact :
509-682-2493

U.S. Forest Service Okanogan-Wenatchee National Forest

Land/Property Owner :
509-664-9254

Nearest Address

200 Mill Rd
Manson, WA 98831

Driving Directions

1. Starting East on US-2 E (US-97 N) toward School St (0.04 miles)
2. Turn left on School St (0.04 miles)
3. Turn right on Melody Ln (0.57 miles)
4. At the stop sign, continue forward on Ohme Garden Rd (1.01 miles)
5. At the roundabout, take the third exit onto US-97-ALT N (31.4 miles)
6. Continue forward on W Woodin Ave (US-97-ALT N) (1.78 miles)
7. Turn left at W Webster Ave to stay on W Woodin Ave (0.4 miles)
8. Turn left on N Columbia St (0.06 miles)
9. Turn left on WA-150 N (W Manson Rd) (1.09 miles)
10. At the roundabout, take the second exit onto WA-150 N (5.26 miles)
11. Finish at 200 Mill Rd, 98831, on the left

Lake Chelan (Willow Point Park - Manson)

LKCH-48.0

Position - Location: 47° 53.577', -120° 11.420' 47° 53' 34.6", -120° 11' 25.2" 47.89295, -120.19034 Manson

Strategy Objective: Exclusion : Keep oil away from shore at this location.

Implementation: Using workboat, secure end of boom to shore at "A" (47.894172, -120.190630, North side of private dock). Pull boom out away from shore W-SW about ~150ft, anchoring near "B" (47.894005, -120.191270) continuing S-SE ~450ft anchoring boom near "C" (47.892978, -120.190388). From "C" continue E-SE ~350ft anchoring boom near Point "D" (47.892885, -120.188986, about ~25ft from end of small private dock) and then to shore near "E" (47.893078, -120.188854). **Sensitive underwater resources in the area could be damaged if anchors are set out of recommended position**

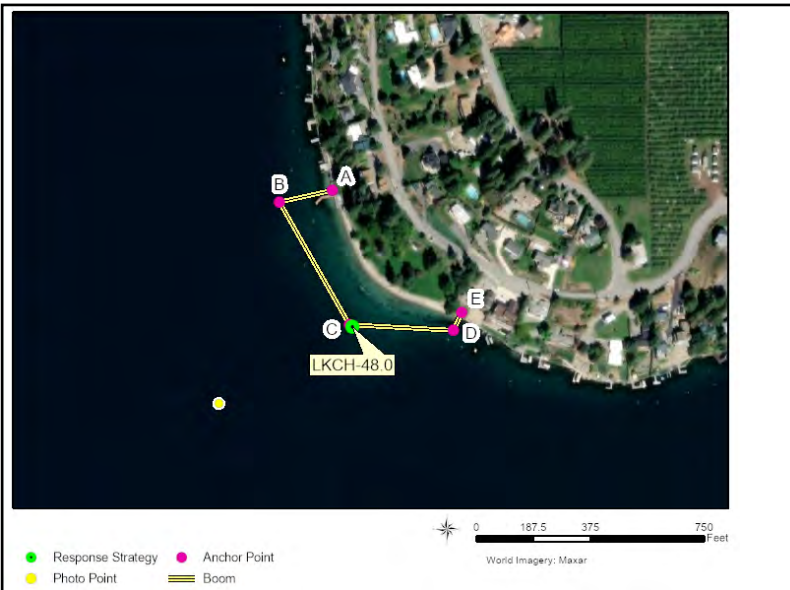
Staging Area: Remote: Coordinate with incident/unified command (or call Ecology) before staging in Old Mill Park (SA-LKCH-52.8)

Site Safety: Water hazard; slip, trip, fall hazards; recreational area/swimming near shore/watercraft

Field Notes: Coordinate with Chelan County Fire District No. 5 (Manson); call 509-663-9911 (Rivercom911 Dispatch). Boat Launch available at Old Mill Park (& low water access at Manson Bay Park via Fire Dept); call Manson Parks 509-687-9635.

Watercourse: Lake - High water June through September

Resources at Risk: Resident Fish, Salmonids, Sensitive Resources, Waterfowl



Recommended Equipment

6 Each	Anchoring Post(s) - (shoreside)
6 Each	Anchoring System(s) - (anchor, lines, floats)
1000 Feet	Boom - B2 (Contractor Boom) or equivalent
1 Each	Bridle(s) - Towing (appropriately sized for boom)
500 Feet	Line - 3/8" poly line
1 Each	Workboat(s) - of adequate size for type and amount of boom

Recommended Personnel

1	Boat Operator
4	Laborer
1	Supervisor



LKCH-48.0 Photo: Aerial photo looking NE at strategy location



Site Contact

Chelan Fire and Rescue
 Fire Department :
 509-663-9911

Manson Parks and Recreation District
 Land/Property Owner : Owner
 509-687-9635

Nearest Address

200 Mill Rd
 Manson, WA 98831

Driving Directions

1. Starting East on US-2 E (US-97 N) toward School St (0.04 miles)
2. Turn left on School St (0.04 miles)
3. Turn right on Melody Ln (0.57 miles)
4. At the stop sign, continue forward on Ohme Garden Rd (1.01 miles)
5. At the roundabout, take the third exit onto US-97-ALT N (31.4 miles)
6. Continue forward on W Woodin Ave (US-97-ALT N) (1.78 miles)
7. Turn left at W Webster Ave to stay on W Woodin Ave (0.4 miles)
8. Turn left on N Columbia St (0.06 miles)
9. Turn left on WA-150 N (W Manson Rd) (1.09 miles)
10. At the roundabout, take the second exit onto WA-150 N (5.26 miles)
11. Finish at 200 Mill Rd, 98831, on the left

Lake Chelan (Chelan/Spaders Bay)

LKCH-58.9

Position - Location: 47° 50.723', -120° 1.909' 47° 50' 43.4", -120° 1' 54.6" 47.84538, -120.03182 Manson

Strategy Objective: Exclusion : Prevent oil from entering this part of Spaders Bay during periods of Low Lake Level Only

Implementation: Using workboat, secure end of boom to shore using existing structures near "A" (47.846758, -120.031990, end of dirt road West of Spader Bay Condominiums). Pull boom away from shore and SE to corner of boat dock at Spader Bay Condominiums. Secure boom to SW corner of dock at "D" (47.844743, -120.029993). Pull boom into desired shape anchoring it at "B" (47.845666, -120.032324, ~400ft from shore at "A") and "C" (47.844736, -120.030761, ~190ft West of dock at "D"). **Sensitive underwater resources in the area could be damaged if anchors are set out of recommended position**

Staging Area: Remote: Coordinate with incident/unified command (or call Ecology) before staging in Old Mill Park (SA-LKCH-52.8)

Site Safety: Water hazard; slip, trip, fall hazards; recreational area/swimming near shore/watercraft

Field Notes: Coordinate with Chelan Fire & Rescue via Rivercom911 Dispatch at 509-663-9911 before implementation. Notify City of Chelan Parks & Recreation at 509-682-8023 before staging equipment at Lakeshore Park.

Watercourse: Lake - High water June through September

Resources at Risk: Resident Fish, Salmonids, Sensitive Resources



Recommended Equipment

3 Each	Anchoring Post(s) - (shoreside)
7 Each	Anchoring System(s) - (anchor, lines, floats)
1200 Feet	Boom - B2 (Contractor Boom) or equivalent
1 Each	Bridle(s) - Towing (appropriately sized for boom)
300 Feet	Line - 3/8" poly line
1 Each	Workboat(s) - of adequate size for type and amount of boom

Recommended Personnel

1	Boat Operator
5	Laborer
1	Supervisor



LKCH-58.9 Photo: Aerial photo looking NNW at strategy location; anchor point is dock closest to photo center.



Site Contact

City of Chelan Parks and Recreation
 Other : Owner

 Chelan, WA 98816
 509-682-8023

Nearest Address

200 Mill Rd.
 Manson, WA 98831

Driving Directions

1. Starting East on US-2 E (US-97 N) toward School St (0.04 miles)
2. Turn left on School St (0.04 miles)
3. Turn right on Melody Ln (0.57 miles)
4. At the stop sign, continue forward on Ohme Garden Rd (1.01 miles)
5. At the roundabout, take the third exit onto US-97-ALT N (31.4 miles)
6. Continue forward on W Woodin Ave (US-97-ALT N) (1.78 miles)
7. Turn left at W Webster Ave to stay on W Woodin Ave (0.4 miles)
8. Turn left on N Columbia St (0.06 miles)
9. Turn left on WA-150 N (W Manson Rd) (1.09 miles)
10. At the roundabout, take the second exit onto WA-150 N (5.26 miles)
11. Finish at 200 Mill Rd, 98831, on the left

Lake Chelan (Chelan)

LKCH-60.6

Position - Location: 47° 50.281', -120° 1.102' 47° 50' 16.9", -120° 1' 6.1" 47.83802, -120.01837 Manson

Strategy Objective: Collection, Exclusion : Prevent oil from reaching Lake Chelan Dam

Implementation: Using workboat, secure end of boom to shore along Chelan Riverwalk Loop Trail at "A" (47.838166, -120.019750, end of dirt road near corner off W. Okanogan Avenue near corner of S 1st Street). Pull boom out away from shore, SE across to Riverwalk Park (opposite shore). Secure remaining end of boom near "B" (47.837736, -120.017185, South of parking area on Emerson Street). Form collection pocket along Riverwalk Park to the NNW. Use additional anchoring systems to maintain the shape of the boom and to keep it secure. Use existing structures or anchor post to secure boom to shore.

Staging Area: Remote: Coordinate with incident/unified command (or call Ecology) before staging in Old Mill Park (SA-LKCH-52.8)

Site Safety: Water hazard; slip, trip, fall hazards; recreational area/watercraft

Field Notes: Coordinate with Chelan Fire & Rescue via Rivercom911 Dispatch at 509-663-9911 before implementation. Notify City of Chelan Parks & Recreation at 509-682-8023 before staging equipment at Lakeshore Park.

Watercourse: Lake - High water June through September

Resources at Risk: Lock and Dam, Resident Fish, Salmonids, Waterfowl



Recommended Equipment

6 Each	Anchoring Post(s) - (shoreside)
1 Each	Anchoring System(s) - (anchor, lines, floats)
700 Feet	Boom - B2 (Contractor Boom) or equivalent
1 Each	Bridle(s) - Towing (appropriately sized for boom)
1 Each	Vac Truck or Skimmer and Storage
1 Each	Workboat(s) - of adequate size for type and amount of boom

Recommended Personnel

1	Boat Operator
3	Laborer
1	Supervisor



LKCH-60.6 Photo: From Chelan Riverwalk Park, looking across Lake Chelan towards Anchor "A" and Chelan Riverwalk Loop Trail

Site Contact

Chelan Fire and Rescue
Fire Department :

Chelan, WA 98816
509-663-9911

Nearest Address

200 Mill Rd
Manson, WA 98831



Driving Directions

1. Starting East on US-2 E (US-97 N) toward School St (0.04 miles)
2. Turn left on School St (0.04 miles)
3. Turn right on Melody Ln (0.57 miles)
4. At the stop sign, continue forward on Ohme Garden Rd (1.01 miles)
5. At the roundabout, take the third exit onto US-97-ALT N (31.4 miles)
6. Continue forward on W Woodin Ave (US-97-ALT N) (1.78 miles)
7. Turn left at W Webster Ave to stay on W Woodin Ave (0.4 miles)
8. Turn left on N Columbia St (0.06 miles)
9. Turn left on WA-150 N (W Manson Rd) (1.09 miles)
10. At the roundabout, take the second exit onto WA-150 N (5.26 miles)
11. Finish at 200 Mill Rd, 98831, on the left

Lake Chelan (Chelan)

LKCH-60.8

Position - Location: 47° 50.383', -120° 1.414' 47° 50' 23.0", -120° 1' 24.9" 47.83972, -120.02357 Manson

Strategy Objective: Collection : Remove oil from the water before it reaches the W Woodin Avenue Bridge

Implementation: Using workboat, secure end of boom to shore near "A" (47.839563, -120.023020, North corner of "Grandview on the Lake" property at 322 W Woodin Ave). Pull boom out away from shore to the West (~250ft); anchor remaining end of boom near "C" (47.839632, -120.023984). Pull boom into desired shape anchoring near "B" (47.839742, -120.023542, ~150ft W-NW from shore). Use additional anchoring systems to maintain the shape of the boom and to keep it secure. Use existing structures to secure boom to shore near Grandview on the Lake property.

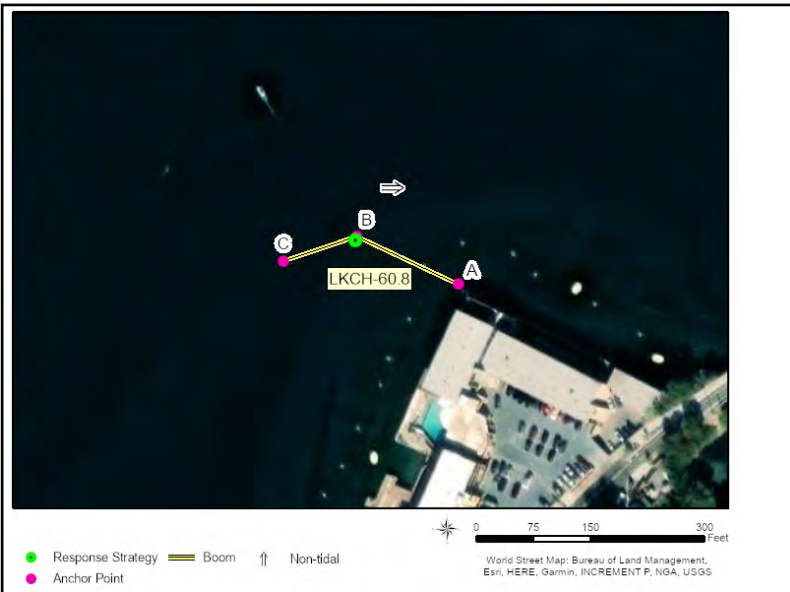
Staging Area: Remote: Coordinate with incident/unified command (or call Ecology) before staging in Old Mill Park (SA-LKCH-52.8)

Site Safety: Water hazard; slip, trip, fall hazards; recreational area/swimming near shore/watercraft

Field Notes: Coordinate with Chelan Fire & Rescue via Rivercom911 Dispatch at 509-663-9911 before implementation. Notify City of Chelan Parks & Recreation at 509-682-8023 before staging equipment at Lakeshore Park.

Watercourse: Lake - High water June through September

Resources at Risk: Lock and Dam, Resident Fish, Salmonids



Recommended Equipment

1	Each	Anchoring Post(s) - (shoreside)
3	Each	Anchoring System(s) - (anchor, lines, floats)
300	Feet	Boom - B2 (Contractor Boom) or equivalent
1	Each	Bridle(s) - Towing (appropriately sized for boom)
1	Each	Vac Truck or Skimmer and Storage
1	Each	Workboat(s) - of adequate size for type and amount of boom

Recommended Personnel

3	Laborer
1	Supervisor



LKCH-60.8 Photo: From shore SW of strategy location, looking NE toward shoreside anchor point.



Site Contact

Chelan Fire and Rescue
Fire Department :

Chelan, WA 98816
509-663-9911

Nearest Address

200 Mill Rd.
Manson, WA 98831

Driving Directions

1. Starting East on US-2 E (US-97 N) toward School St (0.04 miles)
2. Turn left on School St (0.04 miles)
3. Turn right on Melody Ln (0.57 miles)
4. At the stop sign, continue forward on Ohme Garden Rd (1.01 miles)
5. At the roundabout, take the third exit onto US-97-ALT N (31.4 miles)
6. Continue forward on W Woodin Ave (US-97-ALT N) (1.78 miles)
7. Turn left at W Webster Ave to stay on W Woodin Ave (0.4 miles)
8. Turn left on N Columbia St (0.06 miles)
9. Turn left on WA-150 N (W Manson Rd) (1.09 miles)
10. At the roundabout, take the second exit onto WA-150 N (5.26 miles)
11. Finish at 200 Mill Rd, 98831, on the left

Lake Chelan (Chelan)

LKCH-60.9

Position - Location: 47° 50.313', -120° 1.446' 47° 50' 18.8", -120° 1' 26.8" 47.83855, -120.02410 Manson

Strategy Objective: Collection : Remove oil from the water before it reaches the W Woodin Avenue Bridge

Implementation: Using workboat, secure end of boom to shore at NW corner of USDA Forest Service parking lot (428 W Woodin Ave) near "A" (47.838545, -120.023561). Pull boom out away from shore to the West (~300ft); anchor remaining end of boom near "B" (47.838550, 120.024821). Use additional anchoring systems to maintain the shape of the boom and to keep it secure. Use existing structures or anchoring posts to secure boom to shore at US Forestry Department parking lot. Contact Forest Service in Chelan for property access (509-682-4900).

Staging Area: Remote: Coordinate with incident/unified command (or call Ecology) before staging in Old Mill Park (SA-LKCH-52.8)

Site Safety: Water hazard; slip, trip, fall hazards; recreational area/swimming near shore/watercraft

Field Notes: Coordinate with Chelan Fire & Rescue via Rivercom911 Dispatch at 509-663-9911 before implementation. Notify City of Chelan Parks & Recreation at 509-682-8023 before staging equipment at Lakeshore Park.

Watercourse: Lake - High water June through September

Resources at Risk: Lock and Dam, Resident Fish, Salmonids



Recommended Equipment

3 Each	Anchoring System(s) - (anchor, lines, floats)
300 Feet	Boom - B2 (Contractor Boom) or equivalent
1 Each	Bridle(s) - Towing (appropriately sized for boom)
300 Feet	Line - 3/8" poly line
1 Each	Vac Truck or Skimmer and Storage
1 Each	Workboat(s) - of adequate size for type and amount of boom

Recommended Personnel

1	Boat Operator
2	Laborer
1	Supervisor

Lake Chelan (Chelan)

LKCH-61.0

Position - Location: 47° 50.270', -120° 1.499' 47° 50' 16.2", -120° 1' 29.9" 47.83783, -120.02498 Manson

Strategy Objective: Collection : Remove oil from the water before it reaches the W Woodin Avenue Bridge

Implementation: Using workboat, secure end of boom to shore at NW corner of public viewing area near "A" (47.837529, -120.023844); just south of USDA Forest Service offices at 428 W Woodin Avenue. Pull boom out away from shore NW (~450ft); anchor remaining end of boom near "C" (47.838049, -120.025610). Pull boom into desired shape anchoring it near "B" (47.837836, -120.025339, ~100ft SE from end of boom at "C" and ~360ft WNW of "A"). Use additional anchoring systems to maintain the shape of the boom and to keep it secure. Use existing structures or anchoring posts to secure boom to shore.

Staging Area: Remote: Coordinate with incident/unified command (or call Ecology) before staging in Old Mill Park (SA-LKCH-52.8)

Site Safety: Water hazard; slip, trip, fall hazards; recreational area/watercraft

Field Notes: Coordinate with Chelan Fire & Rescue via Rivercom911 Dispatch at 509-663-9911 before implementation. Notify City of Chelan Parks & Recreation at 509-682-8023 before staging equipment at Lakeshore Park.

Watercourse: Lake - High water June through September

Resources at Risk: Lock and Dam, Resident Fish, Salmonids



Recommended Equipment

3 Each	Anchoring Post(s) - (shoreside)
4 Each	Anchoring System(s) - (anchor, lines, floats)
500 Feet	Boom - B2 (Contractor Boom) or equivalent
1 Each	Bridle(s) - Towing (appropriately sized for boom)
1 Each	Vac Truck or Skimmer and Storage
1 Each	Workboat(s) - of adequate size for type and amount of boom

Recommended Personnel

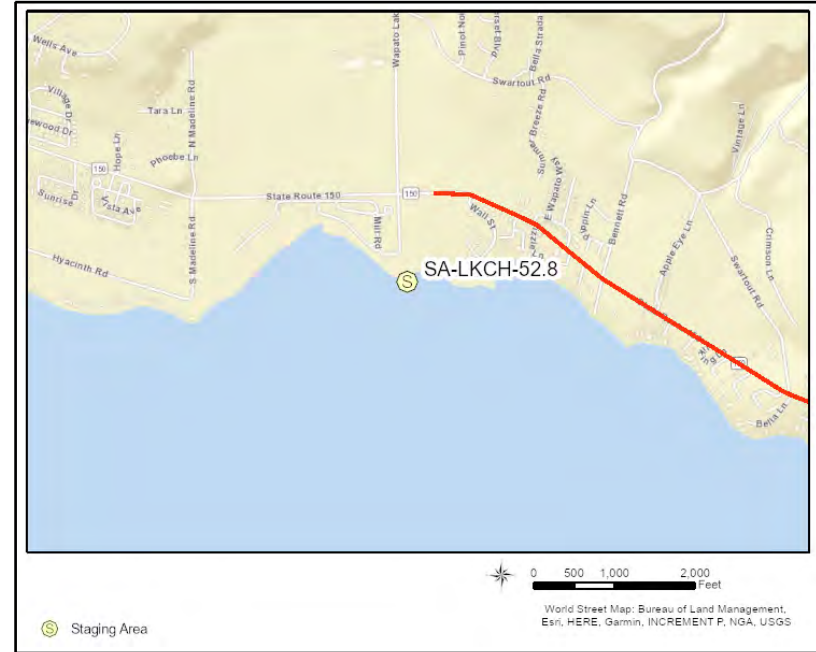
1	Boat Operator
3	Laborer
1	Supervisor

Lake Chelan (Chelan)

LKCH-61.0



LKCH-61.0 Photo: Aerial photo looking south; strategy location is towards left side of photo



Site Contact

Chelan Fire and Rescue
Fire Department :

Chelan, WA 98816
509-663-9911

Nearest Address

200 Mill Rd
Manson, WA 98831

Driving Directions

1. Start at Location 1
2. Go on US-2 E (US-97 N) toward School St (0.04 miles)
3. Turn left on School St (0.04 miles)
4. Turn right on Melody Ln (0.57 miles)
5. At the stop sign, continue forward on Ohme Garden Rd (1.01 miles)
6. At the roundabout, take the third exit onto US-97-ALT N (31.4 miles)
7. Continue forward on W Woodin Ave (US-97-ALT N) (1.78 miles)
8. Turn left at W Webster Ave to stay on W Woodin Ave (0.4 miles)
9. Turn left on N Columbia St (0.06 miles)
10. Turn left on WA-150 N (W Manson Rd) (1.09 miles)
11. At the roundabout, take the second exit onto WA-150 N (5.26 miles)
12. Finish at 200 Mill Rd, 98831, on the left

Lake Chelan (Chelan)

LKCH-61.2

Position - Location: 47° 50.241', -120° 1.728' 47° 50' 14.5", -120° 1' 43.7" 47.83735, -120.02880 Manson

Strategy Objective: Collection : Remove oil from the water before it reaches the W Woodin Avenue Bridge

Implementation: Using workboat, secure end of boom to shore at NW corner of the Peterson’s Waterfront Resort property on the west side of the west-end dock near “A” (47.837350, -120.028760). Pull boom out away from shore NW (~265ft); anchor remaining end of boom near “C” (47.837945, -120.029356). Pull boom into desired shape anchoring it near “B” (47.837781, 120.028973, about 120ft out from west-end dock, ~110ft SE of “C” and ~170ft NNW of “A”). Use additional anchoring systems to maintain the shape of the boom and to keep it secure. Use existing structures or posts to secure boom at “A”.

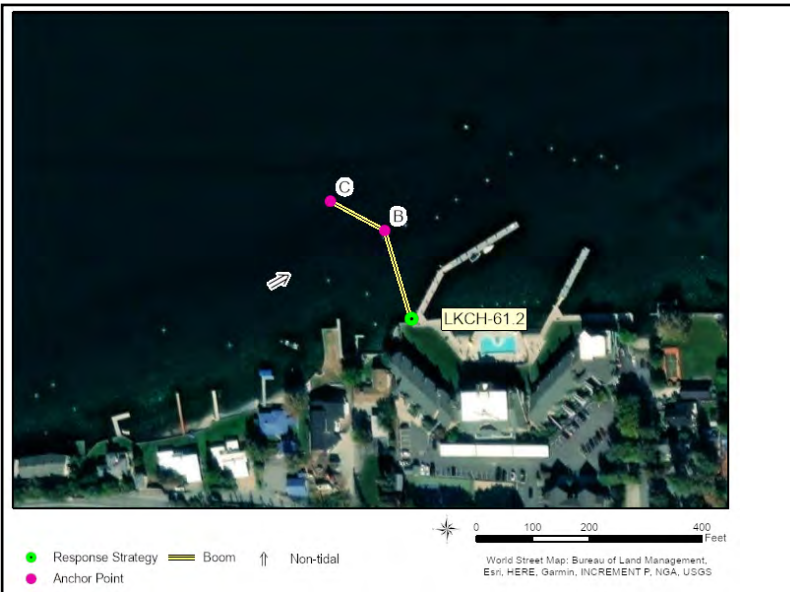
Staging Area: Remote: Coordinate with incident/unified command (or call Ecology) before staging in Old Mill Park (SA-LKCH-52.8)

Site Safety: Water hazard; slip, trip, fall hazards; recreational area/watercraft

Field Notes: Coordinate with Chelan Fire & Rescue via Rivercom911 Dispatch at 509-663-9911 before implementation. Notify City of Chelan Parks & Recreation at 509-682-8023 before staging equipment at Lakeshore Park.

Watercourse: Lake - High water June through September

Resources at Risk: Lock and Dam, Resident Fish, Salmonids



Recommended Equipment

3	Each	Anchoring Post(s) - (shoreside)
3	Each	Anchoring System(s) - (anchor, lines, floats)
300	Feet	Boom - B2 (Contractor Boom) or equivalent
1	Each	Bridle(s) - Towing (appropriately sized for boom)
1	Each	Vac Truck or Skimmer and Storage
1	Each	Workboat(s) - of adequate size for type and amount of boom

Recommended Personnel

1	Boat Operator
2	Laborer
1	Supervisor

Lake Chelan (Chelan)

LKCH-61.2



LKCH-61.2 Photo: Aerial photo looking south at strategy location; anchor point is dock on far left of photo.



Site Contact

Chelan Fire and Rescue
Emergency Contact :

Chelan, WA 98816
509-663-9911

Nearest Address

200 Mill Rd
Manson, WA 98831

Driving Directions

1. Starting East on US-2 E (US-97 N) toward School St (0.04 miles)
2. Turn left on School St (0.04 miles)
3. Turn right on Melody Ln (0.57 miles)
4. At the stop sign, continue forward on Ohme Garden Rd (1.01 miles)
5. At the roundabout, take the third exit onto US-97-ALT N (31.4 miles)
6. Continue forward on W Woodin Ave (US-97-ALT N) (1.78 miles)
7. Turn left at W Webster Ave to stay on W Woodin Ave (0.4 miles)
8. Turn left on N Columbia St (0.06 miles)
9. Turn left on WA-150 N (W Manson Rd) (1.09 miles)
10. At the roundabout, take the second exit onto WA-150 N (5.26 miles)
11. Finish at 200 Mill Rd, 98831, on the left

Lake Chelan

LKCH-104.4

Position - Location: 48° 10.274', -120° 32.690' 48° 10' 16.4", -120° 32' 41.4" 48.17123, -120.54483 Manson

Strategy Objective: Exclusion : Keep oil away from shore at this location during periods of High Lake Level Only

Implementation: Using workboat, secure end of boom to shore near "A" (48.171002, -120.545235). Pull boom out away from shore and then North (250ft); secure remaining boom end to shore near "C" (48.171454, -120.544855). Pull boom into desired shape anchoring it near "B" (48.170992, -120.545039, about ~50ft east of "A"). Boom standoff distance from shore should be 15ft to 20ft. It is very rocky and steep at this location. Shoreside anchoring posts may not be effective and safe shoreside access is not available. Water depth is very deep immediately offshore.

Staging Area: Remote: Coordinate with incident/unified command (or call Ecology) before staging in Old Mill Park (SA-LKCH-52.8)

Site Safety: Steep banks; rocky hillside; water hazard; slip, trip, fall hazards; limited or no site access

Field Notes: Coordinate transit to strategy location with incident/unified command or call Ecology (509-575-2490). Nearest boat ramp (lake above 1093' only) is BL-LKCH-82.6 (~20 mi S). In low water use BL-LKCH-71.4 (~30 mi S).

Watercourse: Lake - High water June through September

Resources at Risk: Resident Fish, Salmonids, Sensitive Resources



Recommended Equipment

6 Each	Anchoring Post(s) - (shoreside)
4 Each	Anchoring System(s) - (anchor, lines, floats)
300 Feet	Boom - B2 (Contractor Boom) or equivalent
1 Each	Bridle(s) - Towing (appropriately sized for boom)
500 Feet	Line - 3/8" poly line
1 Each	Workboat(s) - of adequate size for type and amount of boom

Recommended Personnel

1	Boat Operator
2	Laborer
1	Supervisor



LKCH-104.4 Photo: On Lake Chelan near strategy location looking west towards shore.



Site Contact

Mountain Barge Services

Primary Contact :
509-682-2493

U.S. Forest Service Okanogan-Wenatchee National Forest

Land/Property Owner :
509-664-9254

Nearest Address

200 Mill Rd
Manson, WA 98831

Driving Directions

1. Starting East on US-2 E (US-97 N) toward School St (0.04 miles)
2. Turn left on School St (0.04 miles)
3. Turn right on Melody Ln (0.57 miles)
4. At the stop sign, continue forward on Ohme Garden Rd (1.01 miles)
5. At the roundabout, take the third exit onto US-97-ALT N (31.4 miles)
6. Continue forward on W Woodin Ave (US-97-ALT N) (1.78 miles)
7. Turn left at W Webster Ave to stay on W Woodin Ave (0.4 miles)
8. Turn left on N Columbia St (0.06 miles)
9. Turn left on WA-150 N (W Manson Rd) (1.09 miles)
10. At the roundabout, take the second exit onto WA-150 N (5.26 miles)
11. Finish at 200 Mill Rd, 98831, on the left

Lake Chelan (Lucerne Landing)

LKCH-108.3

Position - Location: 48° 12.132', -120° 35.792' 48° 12' 7.9", -120° 35' 47.5" 48.20220, -120.59654 Manson

Strategy Objective: Diversion : Direct oil into cove near mouth of Railroad Creek, preventing it from impacting other parts of the lake

Implementation: Using workboat, secure end of boom to shore near "A" (48.202085, -120.596089, ~170ft North of mouth of Railroad Creek). Pull boom out away from shore Northwest (100ft) anchoring boom end near "B" (48.202151, -120.596492). Use existing structures or trees to secure boom to shore (use anchor posts only if nothing else available).

Staging Area: Remote: Coordinate with incident/unified command (or call Ecology) before staging in Old Mill Park (SA-LKCH-52.8)

Site Safety: Slip, trip, fall hazards; moving equipment near dock & roadway; water hazard; lake debris, limited site access

Field Notes: Coordinate transit to Lucerne Landing with incident/unified command or call Ecology (509-575-2490). Nearest boat ramp (lake above 1093' only) is BL-LKCH-82.6 (~23 mi S). In low water use BL-LKCH-71.4 (~33 mi S).

Watercourse: Lake - High water June through September

Resources at Risk: Resident Fish, Salmonids, Sensitive Resources, Waterfowl



Recommended Equipment

3 Each	Anchoring Post(s) - (shoreside)
1 Each	Anchoring System(s) - (anchor, lines, floats)
100 Feet	Boom - B2 (Contractor Boom) or equivalent
1 Each	Bridle(s) - Towing (appropriately sized for boom)
200 Feet	Line - 3/8" poly line
1 Each	Workboat(s) - of adequate size for type and amount of boom

Recommended Personnel

1	Boat Operator
2	Laborer
1	Supervisor



LKCH-108.3 Photo: On Lake Chelan near Lucerne Landing looking SE towards mouth of Railroad Creek.



Site Contact

Mountain Barge Services

Primary Contact :
509-682-2493

U.S. Forest Service Okanogan-Wenatchee National Forest

Land/Property Owner :
509-664-9254

Nearest Address

200 Mill Rd
Manson, WA 98831

Driving Directions

1. Starting East on US-2 E (US-97 N) toward School St (0.04 miles)
2. Turn left on School St (0.04 miles)
3. Turn right on Melody Ln (0.57 miles)
4. At the stop sign, continue forward on Ohme Garden Rd (1.01 miles)
5. At the roundabout, take the third exit onto US-97-ALT N (31.4 miles)
6. Continue forward on W Woodin Ave (US-97-ALT N) (1.78 miles)
7. Turn left at W Webster Ave to stay on W Woodin Ave (0.4 miles)
8. Turn left on N Columbia St (0.06 miles)
9. Turn left on WA-150 N (W Manson Rd) (1.09 miles)
10. At the roundabout, take the second exit onto WA-150 N (5.26 miles)
11. Finish at 200 Mill Rd, 98831, on the left

Lake Chelan (Lucerne Landing)

LKCH-108.4

Position - Location: 48° 12.100', -120° 35.901' 48° 12' 6.0", -120° 35' 54.1" 48.20166, -120.59835 Manson

Strategy Objective: Containment : Prevent oil from escaping the dock area at Lucerne Landing

Implementation: Using workboat, secure end of boom to "A" (far end of the dock at Lucerne Landing). Pull boom out away from the dock to the Southeast (~450ft); secure remaining boom end to shore near "B" (48.201430, -120.597200, ~450ft SE of dock's far end, ~250ft NE from base of dock's SE corner). Use additional anchoring systems to maintain the shape of the boom and to keep it secure. Use existing structures or trees to secure boom to shore (use anchor posts only if nothing else available).

Staging Area: Remote: Shoreside of dock at Lucerne Landing.

Site Safety: Slippery banks when wet or icy; trip & fall hazards; moving equipment on dock & roadway; water hazard; lake debris

Field Notes: Coordinate transit to Lucerne Landing with incident/unified command or call Ecology (509-575-2490). Nearest boat ramp (lake above 1093' only) is BL-LKCH-82.6 (~23 mi S). In low water use BL-LKCH-71.4 (~33 mi S).

Watercourse: Lake - High water June through September

Resources at Risk: Resident Fish, Salmonids, Sensitive Resources, Waterfowl



Recommended Equipment

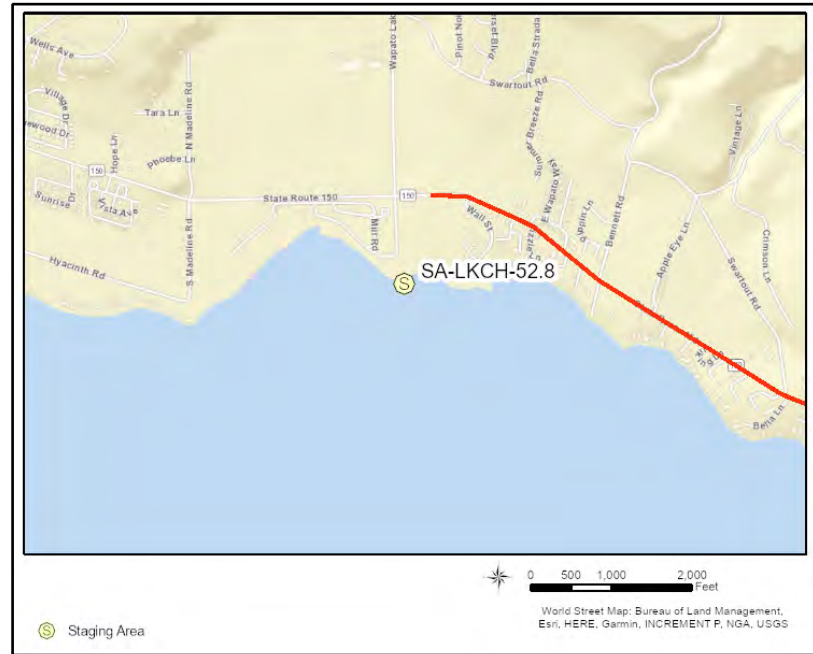
1 Each	Anchoring Post Driver(s)
3 Each	Anchoring Post(s) - (shoreside)
1 Each	Anchoring System(s) - (anchor, lines, floats)
500 Feet	Boom - B2 (Contractor Boom) or equivalent
1 Each	Bridle(s) - Towing (appropriately sized for boom)
300 Feet	Line - 3/8" poly line
1 Each	Workboat(s) - of adequate size for type and amount of boom

Recommended Personnel

1	Boat Operator
3	Laborer
1	Supervisor



LKCH-108.4 Photo: Shoreside of SW corner of dock at Lucerne Landing, looking NW out towards Lake Chelan.



Site Contact

Mountain Barge Services
Land/Property Owner :

Chelan, WA 98816
509-682-2493

Nearest Address

200 Mill Rd
Manson, WA 98831

Driving Directions

1. Starting East on US-2 E (US-97 N) toward School St (0.04 miles)
2. Turn left on School St (0.04 miles)
3. Turn right on Melody Ln (0.57 miles)
4. At the stop sign, continue forward on Ohme Garden Rd (1.01 miles)
5. At the roundabout, take the third exit onto US-97-ALT N (31.4 miles)
6. Continue forward on W Woodin Ave (US-97-ALT N) (1.78 miles)
7. Turn left at W Webster Ave to stay on W Woodin Ave (0.4 miles)
8. Turn left on N Columbia St (0.06 miles)
9. Turn left on WA-150 N (W Manson Rd) (1.09 miles)
10. At the roundabout, take the second exit onto WA-150 N (5.26 miles)
11. Finish at 200 Mill Rd, 98831, on the left

Lake Chelan (Lucerne Landing)

LKCH-108.5

Position - Location: 48° 12.115', -120° 35.935' 48° 12' 6.9", -120° 35' 56.1" 48.20191, -120.59892 Manson

Strategy Objective: Collection : Prevent oil from escaping the dock area at Lucerne Landing

Implementation: Using workboat, secure end of boom to shore near "A" (48.201230, -120.598841, ~215ft South of far end of the dock). Pull boom out and away from shore, around the end of the dock and eastward to "D" (48.201763, -120.596856, ~500ft West of far end of dock). Secure boom to shore near "D" and at "B" (far end of the dock). Pull boom into shape anchoring it near "C" (48.201872, -120.597684, ~300ft out from the dock). Use additional anchoring systems to secure and maintain the shape of the boom. Use existing structures or trees to secure boom to shore (use anchor posts as last resort).

Staging Area: Remote: Coordinate with incident/unified command (or call Ecology) before staging in Old Mill Park (SA-LKCH-52.8)

Site Safety: Slippery banks when wet or icy; trip & fall hazards; moving equipment on dock & roadway; water hazard; lake debris

Field Notes: Coordinate transit to Lucerne Landing with incident/unified command or call Ecology (509-575-2490). Nearest boat ramp (lake above 1093' only) is BL-LKCH-82.6 (~23 mi S). In low water use BL-LKCH-71.4 (~33 mi S).

Watercourse: Lake - High water June through September

Resources at Risk: Resident Fish, Salmonids, Sensitive Resources, Waterfowl



Recommended Equipment

6 Each	Anchoring Post(s) - (shoreside)
4 Each	Anchoring System(s) - (anchor, lines, floats)
800 Feet	Boom - B2 (Contractor Boom) or equivalent
1 Each	Bridle(s) - Towing (appropriately sized for boom)
500 Feet	Line - 3/8" poly line
1 Each	Workboat(s) - of adequate size for type and amount of boom

Recommended Personnel

1	Boat Operator
4	Laborer
1	Supervisor



LKCH-108.5 Photo: Shoreside of SW corner of dock at Lucerne Landing, looking NW out towards Lake Chelan.



Site Contact

Mountain Barge Services

Primary Contact :
509-682-2493

U.S. Forest Service Okanogan-Wenatchee National Forest

Land/Property Owner :
509-664-9254

Nearest Address

200 Mill Rd
Manson, WA 98831

Driving Directions

1. Starting East on US-2 E (US-97 N) toward School St (0.04 miles)
2. Turn left on School St (0.04 miles)
3. Turn right on Melody Ln (0.57 miles)
4. At the stop sign, continue forward on Ohme Garden Rd (1.01 miles)
5. At the roundabout, take the third exit onto US-97-ALT N (31.4 miles)
6. Continue forward on W Woodin Ave (US-97-ALT N) (1.78 miles)
7. Turn left at W Webster Ave to stay on W Woodin Ave (0.4 miles)
8. Turn left on N Columbia St (0.06 miles)
9. Turn left on WA-150 N (W Manson Rd) (1.09 miles)
10. At the roundabout, take the second exit onto WA-150 N (5.26 miles)
11. Finish at 200 Mill Rd, 98831, on the left

This page was intentionally left blank

APPENDIX B

Notification Strategy 2-Pagers

National Park Service Stehekin Ranger Station

LKCH-2.8-N

Position - Location: 48° 18.503', -120° 39.386' 48° 18' 30.2", -120° 39' 23.1" 48.30838, -120.65643 Chelan

Strategy Objective: Notification : Notify park staff in the event of a spill. If spill spreads beyond the marina, notify and coordinate with WA State

Implementation: Call the NPS Stehekin Ranger's Station at (509) 699-2080 x 29 (24-hr number) and WA Department of Archeology and Historic Preservation (360) 586-3065.

Field Notes: Park Service has 26' boat, boom, and access to gravel launch at Stehekin.

Watercourse: Lake - Lake Chelan

Resources at Risk: Federal Lands, Marina, Recreational Use Area, Resident Fish, Salmonids, Sensitive Resources, Waterfowl, Wetlands



Communication Process and Action:

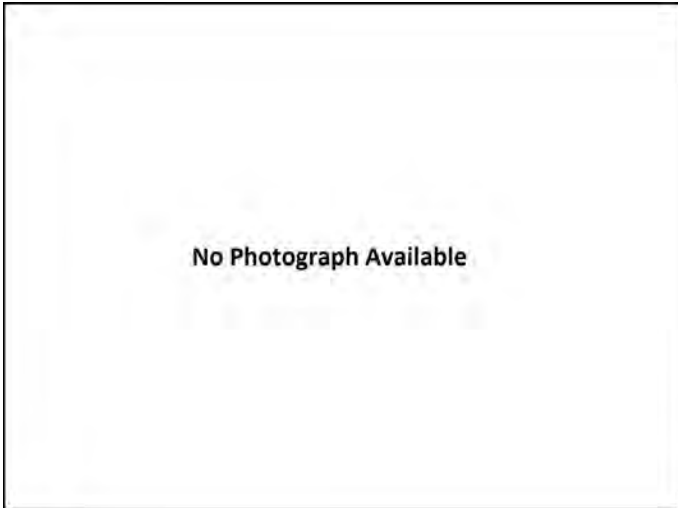
Call the National Park Service and explain the spill incident. Advise they consider deploying spill response equipment where appropriate.

Call the following numbers, in order, until someone at NPS is reached:

Stehekin District Ranger Office:
 (509) 699-2080 x 12 (8 am - 5 pm)
 (509) 699-2080 x 29 (24/7)

National Recreation Area Communication Center: (360) 854-7249

If spill event spreads outside of Stehekin marina area, notify and consult with WA Department of Archeology and Historic Preservation: (360) 586-3065.



LKCH-2.8-N Photo: No photograph available.



Site Contact

National Park Service
Emergency Contact : Stehekin District Ranger Office
509-699-2080 ext. 29 or 12

Nearest Address

1222 W Woodin Ave
Chelan, WA 98816

Driving Directions

Stehekin is accessible only by plane, boat or ferry. Directions to Mountain Barge Services dock:

1. From I-90 in George, Washington take exit 149 towards Quincy/Wenatchee (0.27 miles)
2. Turn left on WA-281 (Royal Anne Ave) (10.56 miles)
3. Turn left on WA-28 (F St SW) (33.79 miles)
4. Turn left on US-2 (US-97) (1.02 miles)
5. Take ramp on the right to US-97-Alt N toward Entiat/Chelan (0.24 miles)
6. Turn right on US-97-ALT (State Highway 97a) (32.7 miles)
7. Turn left into Mountain Barge Services, 1222 W Woodin Ave 98816

At Stehekin Landing, the Golden West Visitor's Center is across the street, or southeast at the end of Stehekin Valley Road.

Lake Chelan Reclamation District Water Intake

LKCH-47.5-N

Position - Location: 47° 53.986', -120° 11.544' 47° 53' 59.2", -120° 11' 32.6" 47.89977, -120.19240 Manson

Strategy Objective: Notification : Shut down drinking water and irrigation intakes.

Implementation: Call Lake Chelan Notification District emergency line at 509-687-3548. Inform them that a spill has occurred and to consider shutting down their intakes.

Field Notes: Two drinking water intakes at 47.5 and 49.5 (Manson Bay). Irrigation intake located at Old Mill Park.

Watercourse: Lake - Lake Chelan

Resources at Risk: Public Health and Safety, Water Intakes



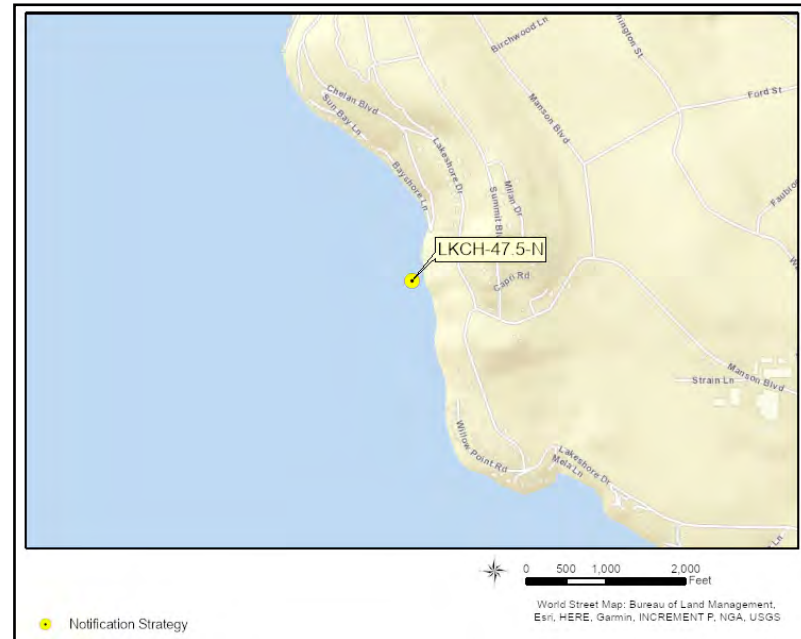
Communication Process and Action:

Call the Lake Chelan Reclamation District and explain the situation regarding the spill. Recommend they consider shutting down their water intakes.

Call the following numbers in order until someone at LCRD is reached:
 509-687-3548 (24/7 Emergency Line)
 509-470-1960 (Water Treatment Plant Operator in Charge)
 509-679-0639 (Manager)



LKCH-47.5-N Photo: Approximate location of northernmost drinking water intake of Lake Chelan Reclamation District.



Site Contact

Lake Chelan Reclamation District
 Emergency Contact : Utility
 80 Wapato Way
 Manson, WA 98831
 509-687-3548

Nearest Address

80 Wapato Way
 Manson, WA 98831

Driving Directions

1. From I-90 in George, Washington take exit 149 towards Quincy/Wenatchee (0.27 miles)
2. Turn left on WA-281 (Royal Anne Ave) (10.56 miles)
3. Turn left on WA-28 (F St SW) (33.79 miles)
4. Turn left on US-2 (US-97) (1.02 miles)
5. Take ramp on the right to US-97-Alt N toward Entiat/Chelan (0.24 miles)
6. Turn right on US-97-ALT (State Highway97a) (33.74 miles)
7. Bear left on W Woodin Ave (0.39 miles)
8. Turn left on N Columbia St (0.07 miles)
9. Turn left on WA-150 (Manson Rd) (7.6 miles)
10. Continue on Wapato Way (0.16 miles)
11. Finish at 80 Wapato Way,98831

City of Chelan Drinking Water Intake

LKCH-60.1-N

Position - Location: 47° 50.180', -120° .945' 47° 50' 10.8", -120° 0' 56.7" 47.83634, -120.01575 Chelan

Strategy Objective: Notification : Shut down drinking water intake and park irrigation intakes.

Implementation: Call City of Chelan Public Works at 509 679 1307 or 509 264 8300 and inform them a spill has occurred. Advise they consider shutting down their intakes.

Field Notes: Drinking water intake at Webster Ave/US-97 Bridge. Park irrigation intakes at Lakeshore Park (59.3) and Lakeside Park (63.3).

Watercourse: Lake - Lake Chelan

Resources at Risk: Public Health and Safety, Water Intakes



Communication Process and Action:

Call the City of Chelan Public Works Department and explain the situation regarding the spill. Recommend they consider shutting down their water intakes.

Call the following numbers in order until someone at Public Works is reached:

- Water Treatment Plant Operator
509 679 1307
509 264 8300
- Assistant Water Treatment Plant Operator
509 630 0921
509 630 6193
- Treatment Plant
509 670 1439
509 630 1883
- Assistant Public Works Director
509 670 1639



LKCH-60.1-N Photo: Aerial photo of approximate location of northernmost water intake.



Site Contact

Chelan Public Works - Water Division
 Municipality (County/City) : City Utility
 50 Chelan Falls Hwy
 Chelan, WA 98816
 509-682-8030

Nearest Address

509 S Washington St
 Chelan, WA 98816

Driving Directions

1. From I-90 in George, Washington take exit 149.
2. At exit 149 take ramp on the right to WA-281 N toward Quincy/Wenatchee (0.27 miles)
3. Turn left on WA-281 (Royal Anne Ave) (10.56 miles)
4. Turn left on WA-28 (F St SW) (33.79 miles)
5. Continue on US-2 (Sunset Hwy) (11.93 miles)
6. At fork keep left on US-97 (State Highway 97) (22.08 miles)
7. Turn left on WA-150 (Highway 150) (2.98 miles)
8. Turn left at US-97-ALT to stay on WA-150 (E Woodin Ave) (0.33 miles)
9. Turn left on S Clifford St (0.07 miles)
10. Turn left on E Wapato Ave (0.07 miles)
11. Turn right on S Washington St (0.06 miles)
12. Finish at 509 S Washington St, 98816

Lake Chelan Hydroelectric Project

LKCH-60.2-N

Position - Location: 47° 50.068', -120° .748' 47° 50' 4.1", -120° 0' 44.9" 47.83446, -120.01246 Chelan

Strategy Objective: Notification : Keep oil out of dam

Implementation: Call System Operations at 509-661-4000 (staffed 24/7). They will deploy response equipment and/or adjust water intakes.

Field Notes:

Watercourse: River - Above a Dam - Chelan River - high flow June-Sept

Resources at Risk: Lock and Dam, Resident Fish, Salmonids



Communication Process and Action:

Call System Operations at 509/661-4000 (staffed 24/7). Chelan County PUD has a trailer of spill response equipment staged within 50 miles of the Lake Chelan Dam. When notified they will deploy response equipment to protect the dam infrastructure. Water intakes are subsurface but their flow could be reduced or shut off in an emergency.



LKCH-60.2-N Photo: Aerial photo looking NE at Lake Chelan Dam



Site Contact

City of Chelan Parks and Recreation

Primary Contact : Owner

Chelan, WA 98816

509-682-8023

Nearest Address

Chiari Falls Road
Chelan, WA 98816

Driving Directions

1. From I-90 in George, WA take exit 149 for State Route 281 toward Quincy/ Wenatchee
2. Go north on WA-281 (State Route 281 N)
3. Turn left on WA-28 (F St SW)
4. Turn left on US-2 (US-97)
5. Take ramp on the right to US-97-Alt N toward Entiat/Chelan
6. Turn right on US-97-ALT (State Highway97a)
7. Turn right on E Farnham Ave
8. Bear right on S Saunders St
9. Turn left on E Iowa St
10. Continue on E Iowa Ave
11. Turn left on Chiari Falls Rd
12. Finish at Chiari Falls Road, 98816, on the left

This page was intentionally left blank

APPENDIX C
Staging Area 2-Pagers

Old Mill Park

SA-LKCH-52.8

Staging Area

Position - Location: 47° 52.689', -120° 7.716' 47° 52' 41.3", -120° 7' 43.0" 47.87815, -120.12860 Manson

Comments: Just east of downtown Manson, this 20-acre recreation facility offers a large parking lot for boat trailers and a pump-out station.



GRP Response Strategies Served:

LKCH-58.9, LKCH-60.8, LKCH-108.5, LKCH-104.4, LKCH-61.0, LKCH-60.9, LKCH-37.5, LKCH-37.0, LKCH-61.2, LKCH-48.0, LKCH-108.4, LKCH-108.3, LKCH-60.6

Location Information

Asset	Type/Status	Amount/Number
Boat Dock(s)	Yes	8
Boat Ramp(s)	Concrete, Solid	4
Boathouse	No	0
Cell Phone Coverage	Yes	
Estimated Lot Size	Marked	200000
Lot Cover (Primary)	Asphalt	
Parking - Car	Marked	200
Parking - Trailer	Marked	123
Power	Unknown	
Restroom	Restroom - Flush	1
User Fee	Yes	10 Launch and daily parking
Waste Disposal	Pumpout	1
Water (potable)	Unknown	



SA-LKCH-52.8 Photo: Looking South towards the boat launch



Site Contact

Manson Parks and Recreation District
Municipality (County/City) : Owner

Manson, WA 98831
509-687-9635

Nearest Address

200 Mill Rd
Manson, WA 98831

Driving Directions

1. From I-90, take exit 149 for State Route 281 S toward Quincy/ Wenatchee
2. Go north on WA-281 (State Route 281 N)
3. Turn left on WA-28 (F St SW)
4. Turn left on US-2 (US-97)
5. Take ramp on the right to US-97-Alt N toward Entiat/Chelan
6. Turn right on US-97-ALT (State Highway 97a)
7. Bear left on W Woodin Ave
8. Turn left on N Columbia St
9. Turn left on WA-150 (Manson Rd)
10. Turn left into Lakeshore Park and Marina

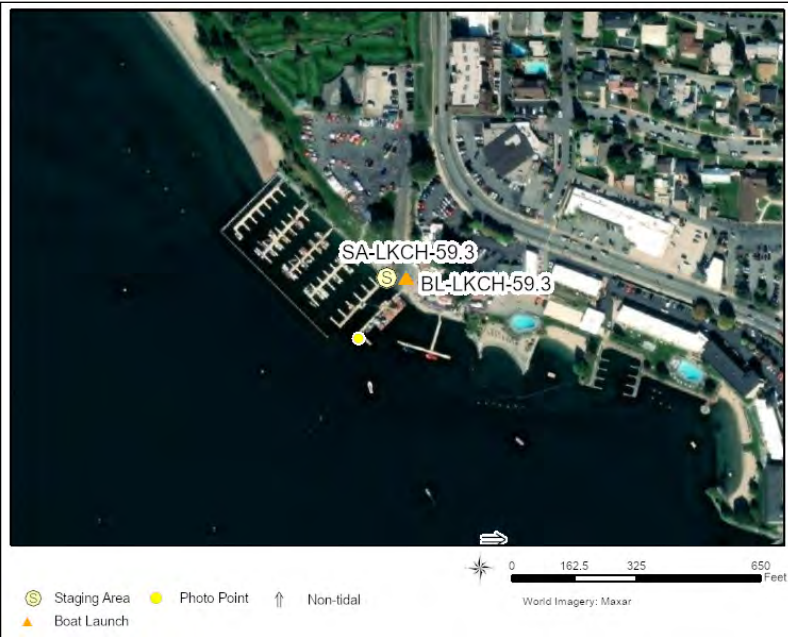
Lakeshore Park Marina

SA-LKCH-59.3

Staging Area

Position - Location: 47° 50.507', -120° 1.463' 47° 50' 30.4", -120° 1' 27.8" 47.84179, -120.02438 Chelan

Comments: Pump-out station, launch and ample pay parking. Adjacent to RV Park with utilities and wi-fi.



GRP Response Strategies Served:

Location Information

Asset	Type/Status	Amount/Number
Boat Dock(s)	Yes	100 Slips
Boat Ramp(s)	Concrete, Solid	1
Cell Phone Coverage	Unknown	
Covered Spaces	Yes	2 Picnic shelters in park
Estimated Lot Size	Square Feet	45000 Square Feet
Lot Cover (Primary)	Asphalt	100 %
Parking - Car	Marked	102 \$5 Fee
Parking - Trailer	Marked	24 \$5 Fee
Power	Yes	
Restroom	Restroom - with Showers	
User Fee	Yes	8 \$ Launch Fee (Moorage varies)
Waste Disposal	Pumpout	2
Water (potable)	Yes	



SA-LKCH-59.3 Photo: Aerial photo looking NE at Lakeshore Park Boat Launch



Site Contact

City of Chelan Parks and Recreation
Municipality (County/City) : Owner

Chelan, WA 98816
509-682-8023

Nearest Address

310 W Manson Road
Chelan, WA 98816

Driving Directions

1. From I-90, take exit 149 for State Route 281 S toward Quincy/ Wenatchee
2. Go north on WA-281 (State Route 281 N)
3. Turn left on WA-28 (F St SW)
4. Turn left on US-2 (US-97)
5. Take ramp on the right to US-97-Alt N toward Entiat/Chelan
6. Turn right on US-97-ALT (State Highway 97a)
7. Bear left on W Woodin Ave
8. Turn left on N Columbia St
9. Turn left on WA-150 (Manson Rd)
10. Turn left into Lakeshore Park and Marina

Staging Area

Position - Location: 47° 52.526', -120° 11.815' 47° 52' 31.6", -120° 11' 48.9" 47.87544, -120.19691 Chelan

Comments: The park provides one kitchen shelter without electricity plus a small parking area.



GRP Response Strategies Served:

Location Information

Asset	Type/Status	Amount/Number
Boat Dock(s)	Yes	1080 feet along 4 piers
Boat Ramp(s)	Concrete, Solid	2 (double lane)
Cell Phone Coverage	Unknown	
Covered Spaces	Yes	1 Kitchen shelter + concession stand
Lot Cover (Primary)	Asphalt	28000 Square Feet
Parking - Car	Marked	
Parking - Trailer	Marked	32
Power	Yes	At campsites
Restroom	Restroom - with Showers	5 At campsites
User Fee	No	
Waste Disposal	Dump Station	1
Water (potable)	Yes	At campsites



SA-LKCH-71.4 Photo: Aerial photo of Lake Chelan State Park boat launch. Taken 4/17/07 low water.



Site Contact

Washington State Parks and Recreation Commission
 Land/Property Contact : Lake Chelan State Park

 Chelan, WA 98816
 509-687-3710

Nearest Address

7544 S. Lakeshore Road
 Chelan, WA 98816

Driving Directions

1. From I-90 in George, Washington take exit 149 towards Quincy/Wenatchee (0.27 miles)
2. Turn left on WA-281 (Royal Anne Ave) (10.56 miles)
3. Turn left on WA-28 (F St SW) (33.79 miles)
4. Turn left on US-2 (US-97) (1.02 miles)
5. Take ramp on the right to US-97-Alt N toward Entiat/Chelan (0.24 miles)
6. Turn right on US-97-ALT (State Highway97a) (23.11 miles)
7. Make sharp left on WA-971 (Navarre Coulee Rd) (9.05 miles)
8. Turn right at S Lakeshore Rd to stay on WA971 (S Lakeshore Rd) (0.14 miles)
9. Take the next left onto State Park Rd, then make the first left to reach the boat launch.

This page was intentionally left blank

APPENDIX D

Boat Launch 2-Pagers

Old Mill Park

BL-LKCH-52.8

Boat Launch Location

Position - Location: 47° 52.689', -120° 7.716' 47° 52' 41.3", -120° 7' 43.0" 47.87815, -120.12860 Manson

Comments: Just east of downtown Manson, this 20-acre recreation facility offers a large parking lot for boat trailers and a pump-out station.



GRP Response Strategies Served:

LKCH-58.9, LKCH-60.8, LKCH-108.5, LKCH-104.4, LKCH-61.0, LKCH-60.9, LKCH-37.5, LKCH-37.0, LKCH-61.2, LKCH-48.0, LKCH-108.3, LKCH-60.6

Location Information

Asset	Type/Status	Amount/Number
Boat Dock(s)	Yes	8
Boat Ramp(s)	Concrete, Solid	4
Boathouse	No	0
Cell Phone Coverage	Yes	
Estimated Lot Size	Marked	200000
Lot Cover (Primary)	Asphalt	
Parking - Car	Marked	200
Parking - Trailer	Marked	123
Power	Unknown	
Restroom	Restroom - Flush	1
User Fee	Yes	10 Launch and daily parking
Waste Disposal	Pumpout	1
Water (potable)	Unknown	



SA-LKCH-52.8 Photo: Looking South towards the boat launch



Site Contact

Manson Parks and Recreation District
 Municipality (County/City) : Owner

 Manson, WA 98831
 509-687-9635

Nearest Address

200 Mill Rd
 Manson, WA 98831

Driving Directions

1. From I-90, take exit 149 for State Route 281 S toward Quincy/ Wenatchee
2. Go north on WA-281 (State Route 281 N)
3. Turn left on WA-28 (F St SW)
4. Turn left on US-2 (US-97)
5. Take ramp on the right to US-97-Alt N toward Entiat/Chelan
6. Turn right on US-97-ALT (State Highway97a)
7. Bear left on W Woodin Ave
8. Turn left on N Columbia St
9. Turn left on WA-150 (Manson Rd)
10. Turn left into Lakeshore Park and Marina

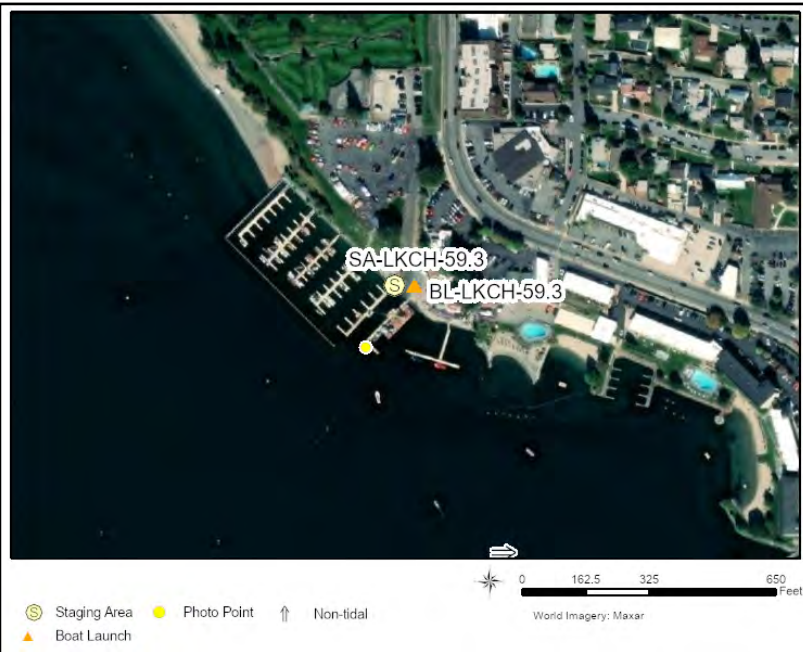
Lakeshore Park Marina

BL-LKCH-59.3

Boat Launch Location

Position - Location: 47° 50.507', -120° 1.463' 47° 50' 30.4", -120° 1' 27.8" 47.84179, -120.02438 Chelan

Comments: Pump-out station, launch and ample pay parking. Adjacent to RV Park with utilities and wi-fi.



GRP Response Strategies Served:

Location Information

Asset	Type/Status	Amount/Number
Boat Dock(s)	Yes	100 Slips
Boat Ramp(s)	Concrete, Solid	1
Cell Phone Coverage	Unknown	
Covered Spaces	Yes	2 Picnic shelters in park
Estimated Lot Size	Square Feet	45000 Square Feet
Lot Cover (Primary)	Asphalt	100 %
Parking - Car	Marked	102 \$5 Fee
Parking - Trailer	Marked	24 \$5 Fee
Power	Yes	
Restroom	Restroom - with Showers	
User Fee	Yes	8 \$ Launch Fee (Moorage varies)
Waste Disposal	Pumpout	2
Water (potable)	Yes	



SA-LKCH-59.3 Photo: Aerial photo looking NE at Lakeshore Park Boat Launch



Site Contact

City of Chelan Parks and Recreation
 Municipality (County/City) : Owner

Chelan, WA 98816
 509-682-8023

Nearest Address

310 W Manson Road
 Chelan, WA 98816

Driving Directions

1. From I-90, take exit 149 for State Route 281 S toward Quincy/ Wenatchee
2. Go north on WA-281 (State Route 281 N)
3. Turn left on WA-28 (F St SW)
4. Turn left on US-2 (US-97)
5. Take ramp on the right to US-97-Alt N toward Entiat/Chelan
6. Turn right on US-97-ALT (State Highway97a)
7. Bear left on W Woodin Ave
8. Turn left on N Columbia St
9. Turn left on WA-150 (Manson Rd)
10. Turn left into Lakeshore Park and Marina

Lake Chelan State Park

BL-LKCH-71.4

Boat Launch Location

Position - Location: 47° 52.526', -120° 11.815' 47° 52' 31.6", -120° 11' 48.9" 47.87544, -120.19691 Chelan

Comments: Accessible in low water. The park has a double lane boat launch with nearby parking for approximately 32 vehicles with trailers. The launch offers a 1080 feet of docking space along the four piers near the launch.



GRP Response Strategies Served:

Location Information

Asset	Type/Status	Amount/Number
Boat Dock(s)	Yes	1080 feet along 4 piers
Boat Ramp(s)	Concrete, Solid	2 (double lane)
Cell Phone Coverage	Unknown	
Covered Spaces	Yes	1 Kitchen shelter + concession stand
Lot Cover (Primary)	Asphalt	28000 Square Feet
Parking - Car	Marked	
Parking - Trailer	Marked	32
Power	Yes	At campsites
Restroom	Restroom - with Showers	5 At campsites
User Fee	No	
Waste Disposal	Dump Station	1
Water (potable)	Yes	At campsites



SA-LKCH-71.4 Photo: Aerial photo of Lake Chelan State Park boat launch. Taken 4/17/07 low water.

Site Contact

Washington State Parks and Recreation Commission
 Land/Property Contact : Lake Chelan State Park

 Chelan, WA 98816
 509-687-3710

Nearest Address

7544 S. Lakeshore Road
 Chelan, WA 98816



Driving Directions

1. From I-90 in George, Washington take exit 149 towards Quincy/Wenatchee (0.27 miles)
2. Turn left on WA-281 (Royal Anne Ave) (10.56 miles)
3. Turn left on WA-28 (F St SW) (33.79 miles)
4. Turn left on US-2 (US-97) (1.02 miles)
5. Take ramp on the right to US-97-Alt N toward Entiat/Chelan (0.24 miles)
6. Turn right on US-97-ALT (State Highway97a) (23.11 miles)
7. Make sharp left on WA-971 (Navarre Coulee Rd) (9.05 miles)
8. Turn right at S Lakeshore Rd to stay on WA971 (S Lakeshore Rd) (0.14 miles)
9. Take the next left onto State Park Rd, then make the first left to reach the boat launch.

25-Mile Creek Boat Launch

BL-LKCH-82.6

Boat Launch Location

Position - Location: 47° 59.590', -120° 15.672' 47° 59' 35.4", -120° 15' 40.3" 47.99316, -120.26120 Chelan

Comments: Twenty-Five Mile Creek State Park offers two boat ramps. The launch is usable from mid-June to the end of December, if the lake elevation is 1093 ft or above. Check with Information Center 360-902-8844. There is a modern marina with moorage for 20 boats up to 23 feet long. If lake is below 1093 ft use Lake Chelan State Park (BL-LKCH-71.4).



Location Information

<u>Asset</u>	<u>Type/Status</u>	<u>Amount/Number</u>
Boat Dock(s)	Yes	34
Boat Ramp(s)	Asphalt	2 - lake must be 1093+ ft
Covered Spaces	No	
Estimated Lot Size	Square Feet	37000 Sq Ft
Fuel	Yes	1 Gas Dock
Lot Cover (Primary)	Gravel	90 %. Asphalt roads.
Parking - Car	Gravel	16800 Sq Ft
Parking - Trailer	Gravel	77000 Sq Ft 2 Lots
Power	Yes	
Restroom	Restroom - with Showers	2
User Fee	No	Discover Pass (emergency exempt)
Waste Disposal	Dump Station	2
Water (potable)	Yes	

GRP Response Strategies Served:

LKCH-108.4



Photo: Aerial photo looking S at 25-Mile Creek State Park boat ramps

Site Contact

Washington State Parks and Recreation Commission
 Land/Property Owner : Lake Chelan State Park

 Chelan, WA 98816
 509-687-3710

Nearest Address

20530 S Lakeshore Rd
 Chelan, WA 98816



Driving Directions

1. From I-90, take exit 149 for State Route 281 S toward Quincy/ Wenatchee
2. Go north on WA-281 (State Route 281 N)
3. Turn left on WA-28 (F St SW)
4. Turn left on US-2 (US-97)
5. Take ramp on the right to US-97-Alt N toward Entiat/Chelan
6. Turn right on US-97-ALT (State Highway97a)
7. Make sharp left on WA-971 (Navarre Coulee Rd)
8. Turn left on S Lakeshore Rd
9. Finish at 20530 S Lakeshore Rd, 98816, on the right