

<p style="text-align: center;"><b>CHAPTER 3</b></p> <p style="text-align: center;"><b>Spill Response Options and Considerations</b></p>		Location				
		Acme	Deming	Everson	Lynden	Ferndale
<b>Waterbody</b>	Rivers	•	•	•	•	•
	Creeks	•	•	•	•	•
	Lakes				•	•
	Pool Area formed by Dam					
	Tidally Influenced Areas					•
	Wetland Area(s)	•	•	•	•	•
	Intermittent Streams (Seasonal Flow)	•	•	•	•	•
<b>Potential Response Options</b>	Source Control and Containment Activities	•	•	•	•	•
	Aerial/Vessel Surveillance Activities	•	•	•	•	•
	Wildlife Rescue and Rehabilitation Activities	•	•	•	•	•
	Collection for Skimming Operations <i>(Note: 1)</i>	•	•	•	•	•
	Vessel Based Skimming Operations <i>(Note: 2)</i>					
	Shore Based Skimming Operations <i>(Note: 3)</i>	•	•	•	•	•
	Shoreside Protection Booming <i>(Note: 4)</i>	•	•	•	•	•
	Shoreside Cleanup Activities <i>(Note: 5)</i>	•	•	•	•	•
	In-Situ Burning <b><i>Areas not pre-approved (Note: 8)</i></b>					
	Dispersant Use <b><i>Areas not pre-approved (Note: 9)</i></b>					
<b>Considerations</b>	Shoreside Access can be Limited by Geography	•	•	•	•	•
	Shoreside Access can be Limited by Private Property	•	•	•	•	•
	State or National Wildlife Refuge/Recreation Area					•
	Threatened/Endangered Terrestrial Species <i>(Note: 6)</i>	•	•	•	•	•
	Public or Commercial Marina(s) in Area					
	Commercial Vessel Movement/Port Area					
	Recreational Boats and/or Inflatables	•	•	•	•	•
	Tribal Lands or U and A Interests <i>(Note: 7)</i>	•	•	•	•	•
	Historic/Cultural District(s) in Area					•
	Dam(s) in Area					
	Interstate Highway Corridor					•
	Oil Movement by Rail in Area	•	•	•	•	•
	Oil Pipeline(s) in Area			•	•	•

**Note 1:** Collection for Skimming Operations response options should include use of enhanced skimming using a U-boom, V – boom, or J – boom configuration in waters large enough for boats to maneuver (e.g., lake, large river).

**Note 2:** Vessel Based Skimming Operations response options should include use of advancing skimmers: weir, belt, brush, drum, or other skimmer types.

**Note 3:** Shore Based Skimming Operations response options should include use of fixed skimmers: weir, belt, brush, drum, or other skimmer types.

**Note 4:** Shoreline Protection should include the deployment of response strategies (boom) to divert and collect oil off the water before shoreline areas are impacted, or deflect and exclude oil away from shoreline areas. These strategies include those published in this document (GRP response strategies), those provided in other plans (e.g., facility contingency plans), and “ad-hoc” strategies developed during the spill itself. A culvert block or underflow dam might be installed to aid in the recovery of spilled oil in small streams or those with intermittent flow.

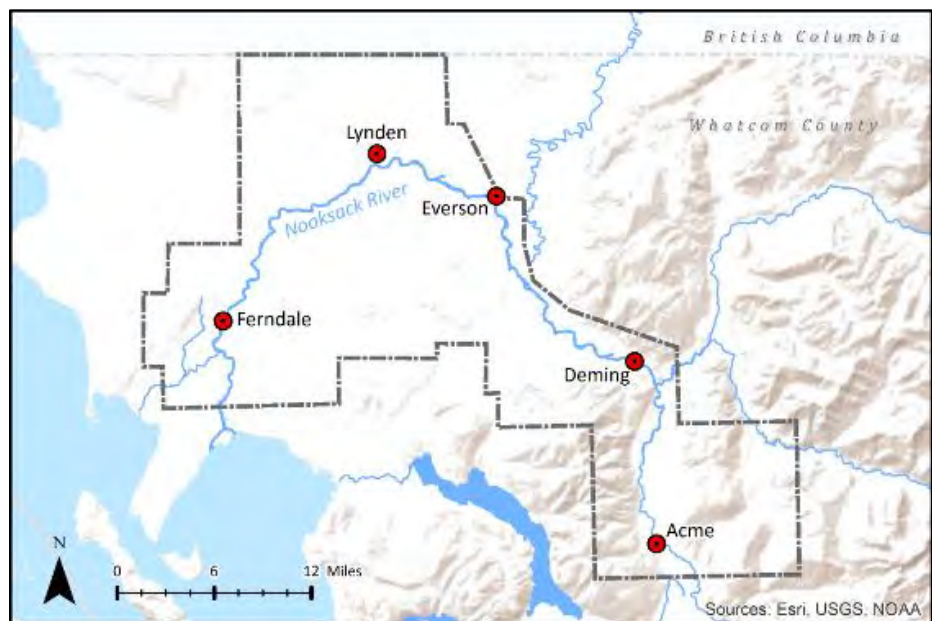
**Note 5:** Shoreside Cleanup options depend on safe and efficient access to locations and the type of river, creek, or stream bank present. Potential activities could include flooding, flushing, manual removal, vacuum, mechanical removal, sorbents, vegetation cutting, mechanical tilling/aeration, and/or sediment reworking/surf washing.

**Note 6:** More information available in Chapter 6. Response and cleanup in these areas may require coordination with Federal or State Fish and Wildlife staff to reduce disturbances to upland species.

**Note 7:** This sheet does not represent all locations where Tribes and Tribal Nations have lands or areas of specific interest (including lands established by treaty or rights to Usual and Accustom areas). Early coordination with tribal governments is highly recommended during a response, regardless of the spill location or potential impact areas.

**Note 8:** These areas are not pre-approved for the use of in-situ burning. Refer to the Northwest Area Contingency Plan for the dispersant Policy.

**Note 9:** These areas are not pre-approved for the use of dispersants. Refer to the Northwest Area Contingency Plan for the dispersant Policy.



**Figure 3-1: Response Options and Considerations Area**